




Product datasheet

Anti-ARSB antibody ab85727

[1 References](#) [2 Images](#)

Overview

Product name	Anti-ARSB antibody
Description	Goat polyclonal to ARSB
Host species	Goat
Tested applications	Suitable for: WB, IHC-P
Species reactivity	Reacts with: Human Predicted to work with: Cow, Cat 
Immunogen	Synthetic peptide corresponding to Human ARSB (internal sequence) (Cysteine residue). Run BLAST with  Run BLAST with 
Positive control	Skeletal muscle tissue; human heart lysate.
General notes	<p>The Life Science industry has been in the grips of a reproducibility crisis for a number of years. Abcam is leading the way in addressing this with our range of recombinant monoclonal antibodies and knockout edited cell lines for gold-standard validation. Please check that this product meets your needs before purchasing.</p> <p>If you have any questions, special requirements or concerns, please send us an inquiry and/or contact our Support team ahead of purchase. Recommended alternatives for this product can be found below, along with publications, customer reviews and Q&As</p>

Properties

Form	Liquid
Storage instructions	Shipped at 4°C. Upon delivery aliquot and store at -20°C. Avoid freeze / thaw cycles.
Storage buffer	pH: 7.30 Preservative: 0.02% Sodium azide Constituents: Tris buffered saline, 0.5% BSA
Purity	Immunogen affinity purified
Clonality	Polyclonal
Isotype	IgG

Applications

The Abpromise guarantee

Our **Abpromise guarantee** covers the use of ab85727 in the following tested applications.

The application notes include recommended starting dilutions; optimal dilutions/concentrations should be determined by the end user.

Application	Abreviews	Notes
WB		Use a concentration of 0.03 - 0.1 µg/ml. Predicted molecular weight: 60 kDa.
IHC-P		Use a concentration of 5 µg/ml.

Target

Involvement in disease

Defects in ARSB are the cause of mucopolysaccharidosis type 6 (MPS6) [MIM:253200]; also known as Maroteaux-Lamy syndrome. MPS6 is an autosomal recessive lysosomal storage disease characterized by intracellular accumulation of dermatan sulfate. Clinical features can include abnormal growth, short stature, stiff joints, skeletal malformations, corneal clouding, hepatosplenomegaly, and cardiac abnormalities. A wide variation in clinical severity is observed. Arylsulfatase B activity is defective in multiple sulfatase deficiency (MSD) [MIM:272200]. MSD is a disorder characterized by decreased activity of all known sulfatases. MSD is due to defects in SUMF1 resulting in the lack of post-translational modification of a highly conserved cysteine into 3-oxoalanine. It combines features of individual sulfatase deficiencies such as metachromatic leukodystrophy, mucopolysaccharidosis, chondrodysplasia punctata, hydrocephalus, ichthyosis, neurologic deterioration and developmental delay.

Sequence similarities

Belongs to the sulfatase family.

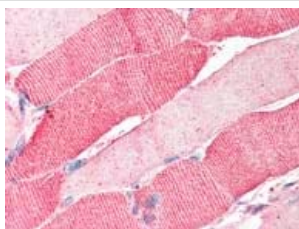
Post-translational modifications

The conversion to 3-oxoalanine (also known as C-formylglycine, FGly), of a serine or cysteine residue in prokaryotes and of a cysteine residue in eukaryotes, is critical for catalytic activity. This post-translational modification is severely defective in multiple sulfatase deficiency (MSD).

Cellular localization

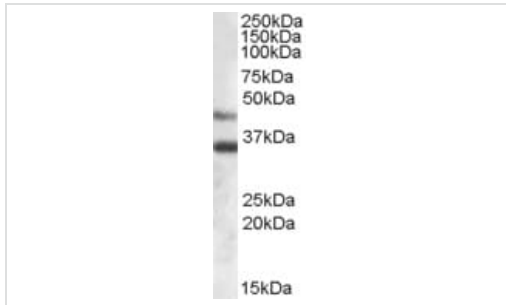
Lysosome.

Images



ab85727, at 5 µg/ml, staining ARSB in skeletal muscle tissue by Immunohistochemistry.

Immunohistochemistry (Formalin/PFA-fixed paraffin-embedded sections) - Anti-ARSB antibody (ab85727)



Western blot - Anti-ARSB antibody (ab85727)

Anti-ARSB antibody (ab85727) at 0.03 µg/ml + human heart lysate
at 35 µg

Predicted band size: 60 kDa

Observed band size: 35,40 kDa

Please note: All products are "FOR RESEARCH USE ONLY. NOT FOR USE IN DIAGNOSTIC PROCEDURES"

Our Abpromise to you: Quality guaranteed and expert technical support

- Replacement or refund for products not performing as stated on the datasheet
- Valid for 12 months from date of delivery
- Response to your inquiry within 24 hours
- We provide support in Chinese, English, French, German, Japanese and Spanish
- Extensive multi-media technical resources to help you
- We investigate all quality concerns to ensure our products perform to the highest standards

If the product does not perform as described on this datasheet, we will offer a refund or replacement. For full details of the Abpromise, please visit <https://www.abcam.com/abpromise> or contact our technical team.

Terms and conditions

- Guarantee only valid for products bought direct from Abcam or one of our authorized distributors