

Product datasheet

Anti-ARTD10 antibody ab70800

[1 References](#) [3 Images](#)

Overview

Product name	Anti-ARTD10 antibody
Description	Rabbit polyclonal to ARTD10
Host species	Rabbit
Tested applications	Suitable for: IHC-P, WB, IP
Species reactivity	Reacts with: Human
Immunogen	Synthetic peptide corresponding to Human ARTD10 aa 300-400. NP_116178.1 Database link: Q53GL7
Positive control	WB: Whole cell lysate from HeLa cells.
General notes	<p>The Life Science industry has been in the grips of a reproducibility crisis for a number of years. Abcam is leading the way in addressing this with our range of recombinant monoclonal antibodies and knockout edited cell lines for gold-standard validation. Please check that this product meets your needs before purchasing.</p> <p>If you have any questions, special requirements or concerns, please send us an inquiry and/or contact our Support team ahead of purchase. Recommended alternatives for this product can be found below, along with publications, customer reviews and Q&As</p>

Properties

Form	Liquid
Storage instructions	Shipped at 4°C. Upon delivery aliquot and store at -20°C. Avoid freeze / thaw cycles.
Storage buffer	pH: 7 Preservative: 0.09% Sodium azide Constituents: 1.815% Tris, 1.764% Sodium citrate, PBS
Purity	Immunogen affinity purified
Clonality	Polyclonal
Isotype	IgG

Applications

The Abpromise guarantee Our [Abpromise guarantee](#) covers the use of ab70800 in the following tested applications.

The application notes include recommended starting dilutions; optimal dilutions/concentrations should be determined by the end user.

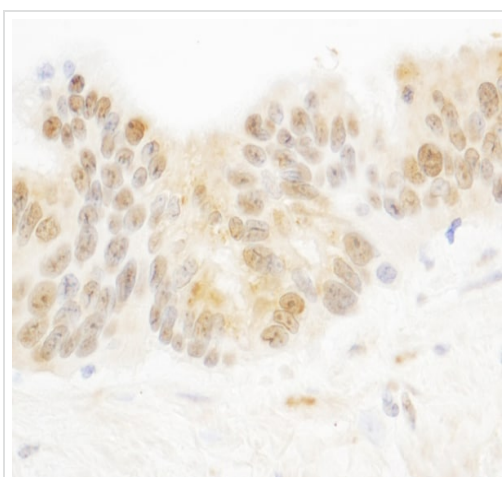
Application	Abreviews	Notes
IHC-P		1/500 - 1/2000. Perform heat mediated antigen retrieval with citrate buffer pH 6 before commencing with IHC staining protocol.
WB		1/500 - 1/2500. Detects a band of approximately 123 kDa (predicted molecular weight: 123 kDa).
IP		Use at 1-4 µg/mg of lysate.

Target

Relevance Poly (ADP ribose) polymerases (PARPs), such as PARP10, regulate gene transcription by altering chromatin organization by adding ADP ribose to histones. PARPs can also function as transcriptional cofactors

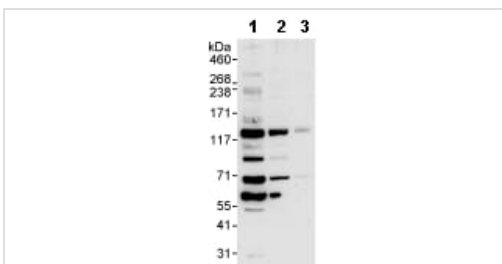
Cellular localization Nuclear

Images



Immunohistochemistry (Formalin/PFA-fixed paraffin-embedded sections) - Anti-ARTD10 antibody (ab70800)

Immunohistochemistry (Formalin/PFA-fixed paraffin-embedded sections) analysis of human ovarian carcinoma tissue labeling ARTD10 with ab70800 at 1/1000 (1µg/ml). Detection: DAB.



Western blot - Anti-ARTD10 antibody (ab70800)

All lanes : Anti-ARTD10 antibody (ab70800) at 1 µg/ml

Lane 1 : HeLa whole cell lysate at 50 µg

Lane 2 : HeLa whole cell lysate at 15 µg

Lane 3 : HeLa whole cell lysate at 5 µg

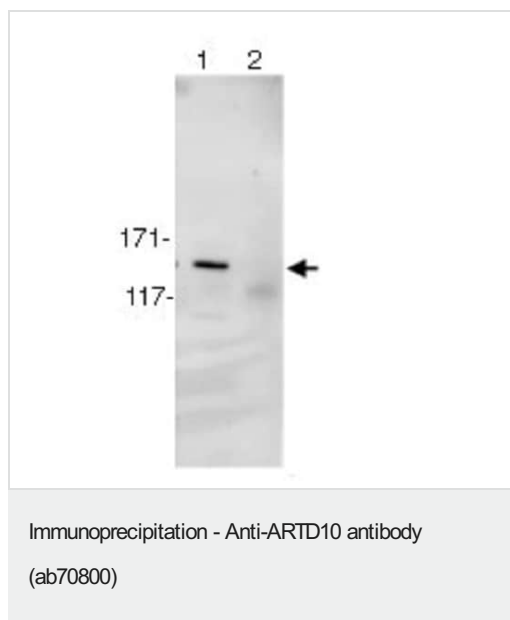
Developed using the ECL technique.

Predicted band size: 123 kDa

Observed band size: 123 kDa

Additional bands at: 60 kDa, 70 kDa, 90 kDa. We are unsure as to the identity of these extra bands.

Exposure time: 3 minutes



1mg of whole cell lysate from HeLa cells was immunoprecipitated using ab70800 at 3ug/mg of lysate (lane 1) or a control rabbit Ig (lane 2). For the subsequent western blot, 20% of immunoprecipitate was loaded per lane, and probed with ab70800 at 1ug/ml.

Detection: Chemiluminescence with exposure time of 30 seconds.

Please note: All products are "FOR RESEARCH USE ONLY. NOT FOR USE IN DIAGNOSTIC PROCEDURES"

Our Abpromise to you: Quality guaranteed and expert technical support

- Replacement or refund for products not performing as stated on the datasheet
- Valid for 12 months from date of delivery
- Response to your inquiry within 24 hours
- We provide support in Chinese, English, French, German, Japanese and Spanish
- Extensive multi-media technical resources to help you
- We investigate all quality concerns to ensure our products perform to the highest standards

If the product does not perform as described on this datasheet, we will offer a refund or replacement. For full details of the Abpromise, please visit <https://www.abcam.com/abpromise> or contact our technical team.

Terms and conditions

- Guarantee only valid for products bought direct from Abcam or one of our authorized distributors