

### Anti-ARTS1/ERAP1 antibody - C-terminal ab181390

1 Image

#### Overview

<b>Product name</b>	Anti-ARTS1/ERAP1 antibody - C-terminal
<b>Description</b>	Rabbit polyclonal to ARTS1/ERAP1 - C-terminal
<b>Host species</b>	Rabbit
<b>Specificity</b>	At least two isoforms of ARTS1/ERAP1 are known to exist; ab181390 will detect both isoforms. ab181390 is predicted to not cross-react with ERAP2.
<b>Tested applications</b>	<b>Suitable for:</b> WB
<b>Species reactivity</b>	<b>Reacts with:</b> Human
<b>Immunogen</b>	Synthetic peptide within Human ARTS1/ERAP1 (C terminal). The exact sequence is proprietary. 19 amino acids. Database link: <a href="#">Q9NZ08</a>
<b>Positive control</b>	SK-N-SH cell lysate.
<b>General notes</b>	<p>The Life Science industry has been in the grips of a reproducibility crisis for a number of years. Abcam is leading the way in addressing this with our range of recombinant monoclonal antibodies and knockout edited cell lines for gold-standard validation. Please check that this product meets your needs before purchasing.</p> <p>If you have any questions, special requirements or concerns, please send us an inquiry and/or contact our Support team ahead of purchase. Recommended alternatives for this product can be found below, along with publications, customer reviews and Q&amp;As</p>

#### Properties

<b>Form</b>	Liquid
<b>Storage instructions</b>	Shipped at 4°C. Store at +4°C short term (1-2 weeks). Upon delivery aliquot. Store at -20°C long term. Avoid freeze / thaw cycle.
<b>Storage buffer</b>	pH: 7.2 Preservative: 0.02% Sodium azide Constituent: 99% PBS
<b>Purity</b>	Immunogen affinity purified
<b>Clonality</b>	Polyclonal
<b>Isotype</b>	IgG

## Applications

### The Abpromise guarantee

Our **Abpromise guarantee** covers the use of ab181390 in the following tested applications.

The application notes include recommended starting dilutions; optimal dilutions/concentrations should be determined by the end user.

Application	Abreviews	Notes
WB		Use a concentration of 1 - 2 µg/ml. Detects a band of approximately 105 kDa (predicted molecular weight: 107 kDa).

## Target

### Function

Aminopeptidase that plays a central role in peptide trimming, a step required for the generation of most HLA class I-binding peptides. Peptide trimming is essential to customize longer precursor peptides to fit them to the correct length required for presentation on MHC class I molecules. Strongly prefers substrates 9-16 residues long. Rapidly degrades 13-mer to a 9-mer and then stops. Preferentially hydrolyzes the residue Leu and peptides with a hydrophobic C-terminus, while it has weak activity toward peptides with charged C-terminus. May play a role in the inactivation of peptide hormones. May be involved in the regulation of blood pressure through the inactivation of angiotensin II and/or the generation of bradykinin in the kidney.

### Tissue specificity

Ubiquitous.

### Sequence similarities

Belongs to the peptidase M1 family.

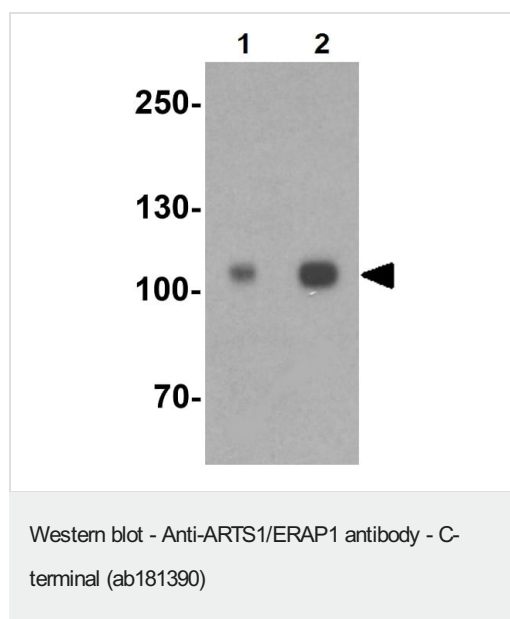
### Post-translational modifications

N-glycosylated.

### Cellular localization

Endoplasmic reticulum membrane.

## Images



**Lane 1 :** Anti-ARTS1/ERAP1 antibody - C-terminal (ab181390) at 1 µg/ml

**Lane 2 :** Anti-ARTS1/ERAP1 antibody - C-terminal (ab181390) at 2 µg/ml

**Lane 1 :** SK-N-SH (Human neuroblastoma cell line) whole cell lysate

**Lane 2 :** SK-N-SH whole cell lysate

Lysates/proteins at 15 µg per lane.

**Predicted band size:** 107 kDa

**Observed band size:** 105 kDa

**Please note:** All products are "FOR RESEARCH USE ONLY. NOT FOR USE IN DIAGNOSTIC PROCEDURES"

### **Our Abpromise to you: Quality guaranteed and expert technical support**

---

- Replacement or refund for products not performing as stated on the datasheet
- Valid for 12 months from date of delivery
- Response to your inquiry within 24 hours
  
- We provide support in Chinese, English, French, German, Japanese and Spanish
- Extensive multi-media technical resources to help you
- We investigate all quality concerns to ensure our products perform to the highest standards

If the product does not perform as described on this datasheet, we will offer a refund or replacement. For full details of the Abpromise, please visit <https://www.abcam.com/abpromise> or contact our technical team.

### **Terms and conditions**

---

- Guarantee only valid for products bought direct from Abcam or one of our authorized distributors