

Product datasheet

Anti-ARTS1/ERAP1 antibody [EPR6069] ab124669

Recombinant RabMAb

[3 References](#) [6 Images](#)

Overview

Product name	Anti-ARTS1/ERAP1 antibody [EPR6069]
Description	Rabbit monoclonal [EPR6069] to ARTS1/ERAP1
Host species	Rabbit
Tested applications	Suitable for: WB, IHC-P Unsuitable for: Flow Cyt or ICC/IF
Species reactivity	Reacts with: Mouse, Rat, Human
Immunogen	Synthetic peptide corresponding to Human ARTS1/ERAP1 aa 900-1000 (C terminal).
Positive control	WB: K562, HUVEC, mouse heart, rat spleen and A431 cell lysates. IHC-P: Human uterus and human bladder carcinoma tissue. Flow Cyt: K562 cells.
General notes	<p>This product is a recombinant monoclonal antibody, which offers several advantages including:</p> <ul style="list-style-type: none"> - High batch-to-batch consistency and reproducibility - Improved sensitivity and specificity - Long-term security of supply - Animal-free production <p>For more information see here.</p> <p>Our RabMAb[®] technology is a patented hybridoma-based technology for making rabbit monoclonal antibodies. For details on our patents, please refer to RabMAb[®] patents.</p>

Properties

Form	Liquid
Storage instructions	Shipped at 4°C. Store at +4°C short term (1-2 weeks). Upon delivery aliquot. Store at -20°C long term. Avoid freeze / thaw cycle.
Storage buffer	pH: 7.20 Preservative: 0.01% Sodium azide Constituents: 40% Glycerol (glycerin, glycerine), 0.05% BSA, 59% PBS
Purity	Protein A purified
Clonality	Monoclonal
Clone number	EPR6069

Isotype

IgG

Applications

The Abpromise guarantee

Our **Abpromise guarantee** covers the use of ab124669 in the following tested applications.

The application notes include recommended starting dilutions; optimal dilutions/concentrations should be determined by the end user.

Application	Abreviews	Notes
WB		1/1000 - 1/10000. Predicted molecular weight: 107 kDa.
IHC-P		1/1000. Perform heat mediated antigen retrieval via the pressure cooker method before commencing with IHC staining protocol. The mouse and rat recommendation is based on the WB results. We do not guarantee IHC-P for mouse and rat. For unpurified use at 1/50 - 1/100.

Application notes

Is unsuitable for Flow Cyt or ICC/IF.

Target

Function

Aminopeptidase that plays a central role in peptide trimming, a step required for the generation of most HLA class I-binding peptides. Peptide trimming is essential to customize longer precursor peptides to fit them to the correct length required for presentation on MHC class I molecules. Strongly prefers substrates 9-16 residues long. Rapidly degrades 13-mer to a 9-mer and then stops. Preferentially hydrolyzes the residue Leu and peptides with a hydrophobic C-terminus, while it has weak activity toward peptides with charged C-terminus. May play a role in the inactivation of peptide hormones. May be involved in the regulation of blood pressure through the inactivation of angiotensin II and/or the generation of bradykinin in the kidney.

Tissue specificity

Ubiquitous.

Sequence similarities

Belongs to the peptidase M1 family.

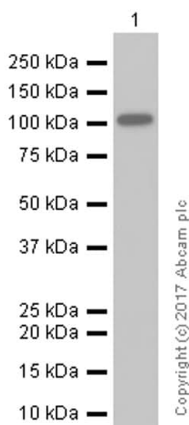
Post-translational modifications

N-glycosylated.

Cellular localization

Endoplasmic reticulum membrane.

Images



Western blot - Anti-ARTS1/ERAP1 antibody
[EPR6069] (ab124669)

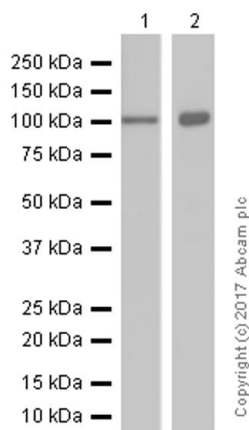
Anti-ARTS1/ERAP1 antibody [EPR6069] (ab124669) at 1/5000 dilution (purified) + K-562 (Human chronic myelogenous leukemia lymphoblast) whole cell lysates at 15 µg

Secondary

Goat Anti-Rabbit IgG H&L (HRP) ([ab97051](#)) at 1/20000 dilution

Predicted band size: 107 kDa

Blocking and diluting buffer: 5% NFDM/TBST.



Western blot - Anti-ARTS1/ERAP1 antibody
[EPR6069] (ab124669)

All lanes : Anti-ARTS1/ERAP1 antibody [EPR6069] (ab124669) at 1/5000 dilution (purified)

Lane 1 : Mouse heart lysates

Lane 2 : Rat spleen lysates

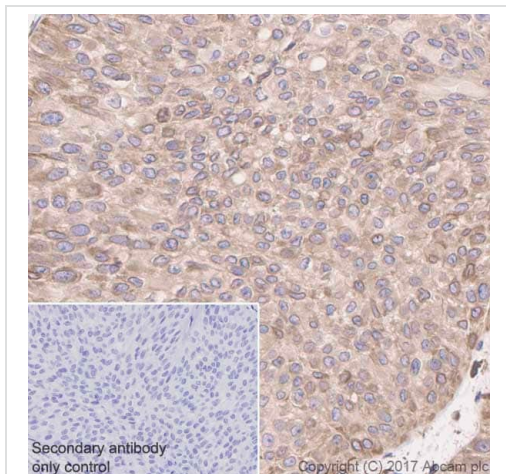
Lysates/proteins at 20 µg per lane.

Secondary

All lanes : Goat Anti-Rabbit IgG H&L (HRP) ([ab97051](#)) at 1/20000 dilution

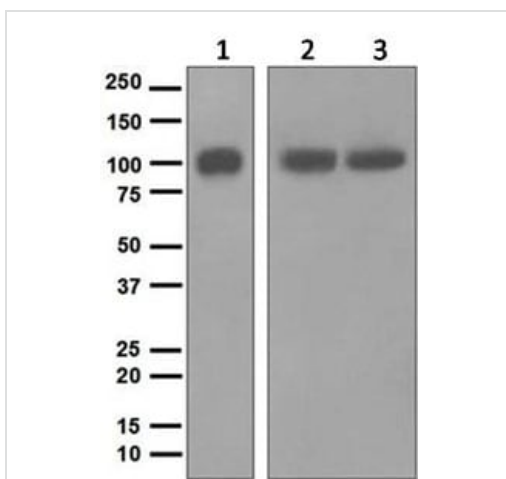
Predicted band size: 107 kDa

Blocking and diluting buffer: 5% NFDM/TBST.



Immunohistochemistry (Formalin/PFA-fixed paraffin-embedded sections) - Anti-ARTS1/ERAP1 antibody [EPR6069] (ab124669)

Immunohistochemistry (Formalin/PFA-fixed paraffin-embedded sections) analysis of human bladder carcinoma tissue sections labeling ARTS1/ERAP1 with Purified ab124669 at 1:1000 dilution. Heat mediated antigen retrieval was performed using **ab93684** (Tris/EDTA buffer, pH 9.0). Tissue was counterstained with Hematoxylin. ImmunoHistoProbe one step HRP Polymer (ready to use) secondary antibody was used at 1:0 dilution. PBS instead of the primary antibody was used as the negative control.



Western blot - Anti-ARTS1/ERAP1 antibody [EPR6069] (ab124669)

All lanes : Anti-ARTS1/ERAP1 antibody [EPR6069] (ab124669) at 1/1000 dilution (unpurified)

Lane 1 : K562 cell lysate

Lane 2 : HUVEC cell lysate

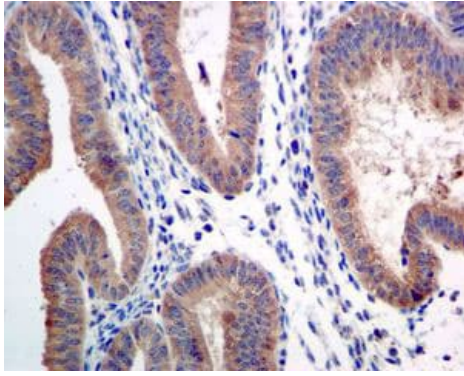
Lane 3 : A431 cell lysate

Lysates/proteins at 10 µg per lane.

Secondary

All lanes : Goat anti-rabbit HRP

Predicted band size: 107 kDa

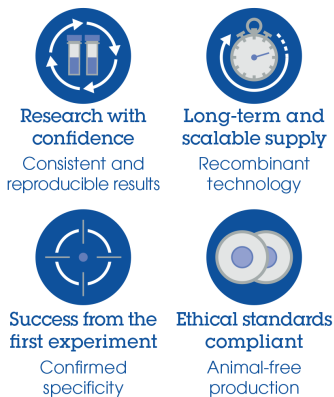


Immunohistochemistry (Formalin/PFA-fixed paraffin-embedded sections) - Anti-ARTS1/ERAP1 antibody [EPR6069] (ab124669)

Unpurified ab124669, at a 1/50 dilution, staining ARTS1/ERAP1 in paraffin embedded Human uterus tissue by Immunohistochemistry.

Perform heat mediated antigen retrieval via the pressure cooker method before commencing with IHC staining protocol.

Why choose a recombinant antibody?



Anti-ARTS1/ERAP1 antibody [EPR6069] (ab124669)

Please note: All products are "FOR RESEARCH USE ONLY. NOT FOR USE IN DIAGNOSTIC PROCEDURES"

Our Abpromise to you: Quality guaranteed and expert technical support

- Replacement or refund for products not performing as stated on the datasheet
- Valid for 12 months from date of delivery
- Response to your inquiry within 24 hours
- We provide support in Chinese, English, French, German, Japanese and Spanish
- Extensive multi-media technical resources to help you
- We investigate all quality concerns to ensure our products perform to the highest standards

If the product does not perform as described on this datasheet, we will offer a refund or replacement. For full details of the Abpromise, please visit <https://www.abcam.com/abpromise> or contact our technical team.

Terms and conditions

- Guarantee only valid for products bought direct from Abcam or one of our authorized distributors