

# Anti-ASAH1 antibody ab154401

[2 Images](#)

### Overview

<b>Product name</b>	Anti-ASAH1 antibody
<b>Description</b>	Rabbit polyclonal to ASAH1
<b>Host species</b>	Rabbit
<b>Tested applications</b>	<b>Suitable for:</b> WB, IHC-P
<b>Species reactivity</b>	<b>Reacts with:</b> Human
<b>Immunogen</b>	Recombinant fragment, corresponding to a region within amino acids 197-395 of Human ASAH1 (Uniprot Q13510).
<b>Positive control</b>	NT2D1 whole cell lysates, Human adenocarcinoma tissue
<b>General notes</b>	<p>The Life Science industry has been in the grips of a reproducibility crisis for a number of years. Abcam is leading the way in addressing this with our range of recombinant monoclonal antibodies and knockout edited cell lines for gold-standard validation. Please check that this product meets your needs before purchasing.</p> <p>If you have any questions, special requirements or concerns, please send us an inquiry and/or contact our Support team ahead of purchase. Recommended alternatives for this product can be found below, along with publications, customer reviews and Q&amp;As</p>

### Properties

<b>Form</b>	Liquid
<b>Storage instructions</b>	Shipped at 4°C. Upon delivery aliquot and store at -20°C or -80°C. Avoid repeated freeze / thaw cycles.
<b>Storage buffer</b>	<p>pH: 7.00</p> <p>Preservative: 0.025% Proclin 300</p> <p>Constituents: 79% PBS, 20% Glycerol (glycerin, glycerine)</p>
<b>Purity</b>	Immunogen affinity purified
<b>Clonality</b>	Polyclonal
<b>Isotype</b>	IgG

### Applications

## The Abpromise guarantee

Our **Abpromise guarantee** covers the use of ab154401 in the following tested applications.

The application notes include recommended starting dilutions; optimal dilutions/concentrations should be determined by the end user.

Application	Abreviews	Notes
WB		1/500 - 1/3000. Predicted molecular weight: 45 kDa.
IHC-P		1/100 - 1/1000. Perform heat mediated antigen retrieval with citrate buffer pH 6 before commencing with IHC staining protocol. Alternatively use Tris-EDTA buffer (pH8.0).

## Target

### Function

Hydrolyzes the sphingolipid ceramide into sphingosine and free fatty acid.

### Tissue specificity

Broadly expressed with highest expression in heart.

### Involvement in disease

Defects in *ASAH1* are the cause of Farber lipogranulomatosis (FL) [MIM:228000]; also known as Farber disease (FD). This sphingolipid disease is characterized by subcutaneous lipid-loaded nodules, excruciating pain in the joints and extremities, marked accumulation of ceramide in lysosomes, and death by three years of age.

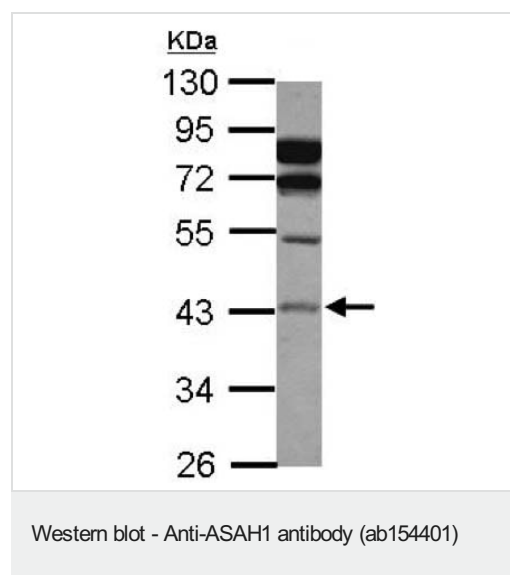
### Sequence similarities

Belongs to the acid ceramidase family.

### Cellular localization

Lysosome.

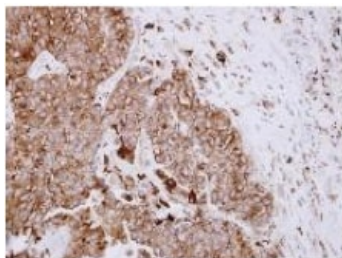
## Images



Anti-ASAH1 antibody (ab154401) at 1/1000 dilution + NT2D1 whole cell lysate at 30 µg

**Predicted band size:** 45 kDa

10% SDS PAGE



Immunohistochemical analysis of paraffin embedded Human Adenocarcinoma tissue labeling ASAH1 with ab154401 antibody at 1/500.

Immunohistochemistry (Formalin/PFA-fixed paraffin-embedded sections) - Anti-ASAH1 antibody (ab154401)

**Please note:** All products are "FOR RESEARCH USE ONLY. NOT FOR USE IN DIAGNOSTIC PROCEDURES"

### Our Abpromise to you: Quality guaranteed and expert technical support

---

- Replacement or refund for products not performing as stated on the datasheet
- Valid for 12 months from date of delivery
- Response to your inquiry within 24 hours
- We provide support in Chinese, English, French, German, Japanese and Spanish
- Extensive multi-media technical resources to help you
- We investigate all quality concerns to ensure our products perform to the highest standards

If the product does not perform as described on this datasheet, we will offer a refund or replacement. For full details of the Abpromise, please visit <https://www.abcam.com/abpromise> or contact our technical team.

### Terms and conditions

---

- Guarantee only valid for products bought direct from Abcam or one of our authorized distributors