


Product datasheet

Anti-ASAH2B antibody [EPR10539] ab170949

Recombinant RabMAb

[1 References](#) [4 Images](#)

Overview

Product name	Anti-ASAH2B antibody [EPR10539]
Description	Rabbit monoclonal [EPR10539] to ASAH2B
Host species	Rabbit
Tested applications	Suitable for: Flow Cyt (Intra), WB, IP
Species reactivity	Reacts with: Human Predicted to work with: Mouse, Rat 
Immunogen	Synthetic peptide within Human ASAH2B aa 500-600 (Cysteine residue). The exact sequence is proprietary. Database link: P0C7U1
Positive control	HeLa; Jurkat and 293T cell lysates; Human fetal heart tissue lysate; 293 cells
General notes	This product is a recombinant monoclonal antibody, which offers several advantages including: <ul style="list-style-type: none">- High batch-to-batch consistency and reproducibility- Improved sensitivity and specificity- Long-term security of supply- Animal-free production For more information see here . Our RabMAb [®] technology is a patented hybridoma-based technology for making rabbit monoclonal antibodies. For details on our patents, please refer to RabMAb[®] patents .

Properties

Form	Liquid
Storage instructions	Shipped at 4°C. Store at +4°C short term (1-2 weeks). Upon delivery aliquot. Store at -20°C long term. Avoid freeze / thaw cycle.
Storage buffer	pH: 7.20 Preservative: 0.01% Sodium azide Constituents: 9% PBS, 40% Glycerol (glycerin, glycerine), 0.05% BSA, 50% Tissue culture supernatant
Purity	Protein A purified
Clonality	Monoclonal

Clone number EPR10539

Isotype IgG

Applications

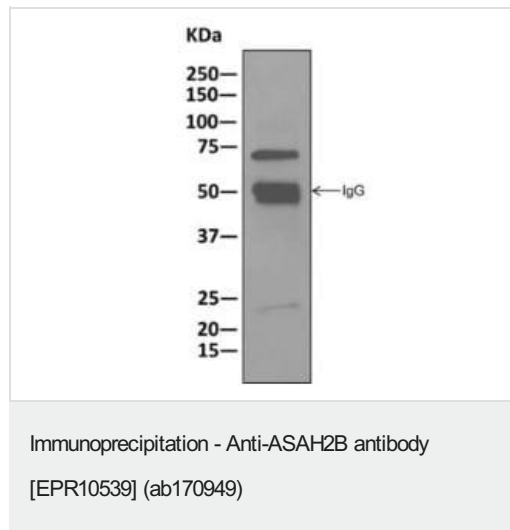
The Abpromise guarantee Our **Abpromise guarantee** covers the use of ab170949 in the following tested applications.

The application notes include recommended starting dilutions; optimal dilutions/concentrations should be determined by the end user.

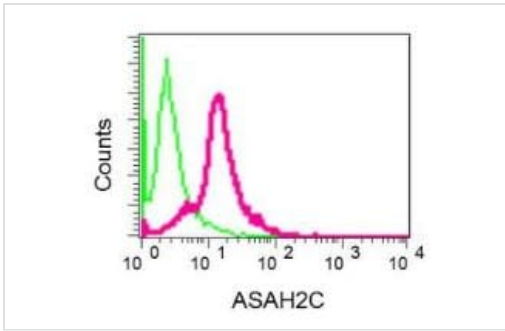
Application	Abreviews	Notes
Flow Cyt (Intra)		1/10 - 1/100. ab172730 - Rabbit monoclonal IgG, is suitable for use as an isotype control with this antibody.
WB		1/1000 - 1/10000. Predicted molecular weight: 69 kDa.
IP		1/10 - 1/100.

Target

Images

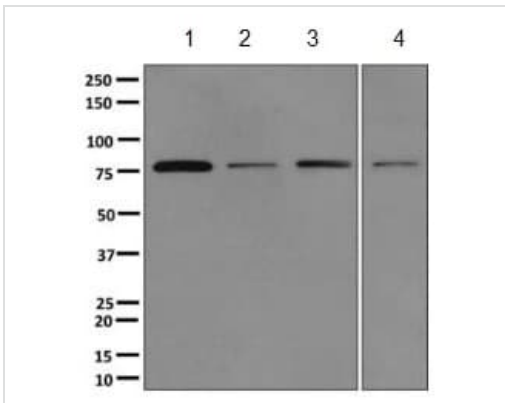


Anti-ATPB antibody [EPR11991] (**ab170948**) at 1/10 dilution +
HeLa cell lysate at 10 µg



Flow Cytometry (Intracellular) - Anti-ASAH2B antibody [EPR10539] (ab170949)

Intracellular flow cytometric analysis of permeabilized 293 cells labeling ASAH2C using ab170949 at 1/10 dilution (red) or a rabbit IgG negative (green).



Western blot - Anti-ASAH2B antibody [EPR10539] (ab170949)

All lanes : Anti-ATPB antibody [EPR11991] (**ab170948**) at 1/1000 dilution

Lane 1 : HeLa cell lysate

Lane 2 : Jurkat cell lysate

Lane 3 : 293T cell lysate

Lane 4 : Fetal heart tissue lysate

Lysates/proteins at 10 µg per lane.

Secondary

All lanes : Goat anti-rabbit HRP at 1/2000 dilution

Predicted band size: 69 kDa

Why choose a recombinant antibody?

 <p>Research with confidence Consistent and reproducible results</p>	 <p>Long-term and scalable supply Recombinant technology</p>
 <p>Success from the first experiment Confirmed specificity</p>	 <p>Ethical standards compliant Animal-free production</p>

Anti-ASAH2B antibody [EPR10539] (ab170949)

Please note: All products are "FOR RESEARCH USE ONLY. NOT FOR USE IN DIAGNOSTIC PROCEDURES"

Our Abpromise to you: Quality guaranteed and expert technical support

- Replacement or refund for products not performing as stated on the datasheet
- Valid for 12 months from date of delivery
- Response to your inquiry within 24 hours

- We provide support in Chinese, English, French, German, Japanese and Spanish
- Extensive multi-media technical resources to help you
- We investigate all quality concerns to ensure our products perform to the highest standards

If the product does not perform as described on this datasheet, we will offer a refund or replacement. For full details of the Abpromise, please visit <https://www.abcam.com/abpromise> or contact our technical team.

Terms and conditions

- Guarantee only valid for products bought direct from Abcam or one of our authorized distributors