

Anti-ASCC2 antibody ab228827

[1 References](#) [3 Images](#)

Overview

Product name	Anti-ASCC2 antibody
Description	Rabbit polyclonal to ASCC2
Host species	Rabbit
Tested applications	Suitable for: ICC/IF, IHC-P, WB
Species reactivity	Reacts with: Human
Immunogen	Recombinant fragment within Human ASCC2 (internal sequence). The exact sequence is proprietary. Database link: Q9H1I8
Positive control	ICC/IF: HeLa cells. IHC-P: Human breast cancer tissue. WB: HeLa and HepG2 whole cell lysates.
General notes	<p>The Life Science industry has been in the grips of a reproducibility crisis for a number of years. Abcam is leading the way in addressing this with our range of recombinant monoclonal antibodies and knockout edited cell lines for gold-standard validation. Please check that this product meets your needs before purchasing.</p> <p>If you have any questions, special requirements or concerns, please send us an inquiry and/or contact our Support team ahead of purchase. Recommended alternatives for this product can be found below, along with publications, customer reviews and Q&As</p>

Properties

Form	Liquid
Storage instructions	Shipped at 4°C. Store at +4°C short term (1-2 weeks). Upon delivery aliquot. Store at -20°C long term. Avoid freeze / thaw cycle.
Storage buffer	pH: 7.00 Preservative: 0.01% Thimerosal (merthiolate) Constituents: 78.99% PBS, 1% BSA, 20% Glycerol (glycerin, glycerine)
Purity	Immunogen affinity purified
Clonality	Polyclonal
Isotype	IgG

Applications

The Abpromise guarantee

Our **Abpromise guarantee** covers the use of ab228827 in the following tested applications.

The application notes include recommended starting dilutions; optimal dilutions/concentrations should be determined by the end user.

Application	Abreviews	Notes
ICC/IF		1/100 - 1/1000.
IHC-P		1/100 - 1/1000.
WB		1/1000 - 1/10000. Predicted molecular weight: 86 kDa.

Target

Function

Enhances NF-kappa-B, SRF and AP1 transactivation.

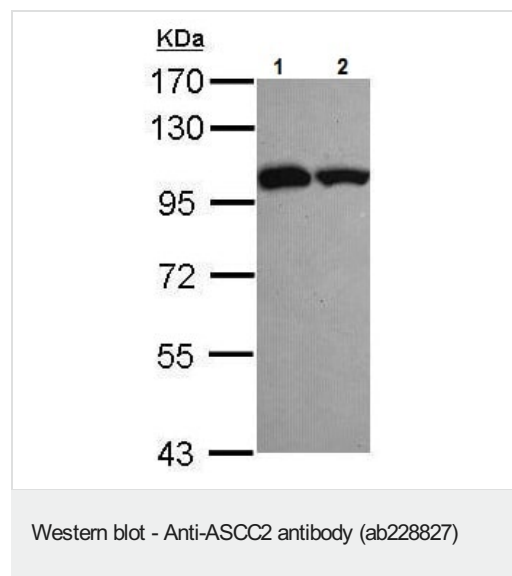
Tissue specificity

Ubiquitous.

Sequence similarities

Belongs to the ASCC2 family.
Contains 1 CUE domain.

Images



All lanes : Anti-ASCC2 antibody (ab228827) at 1/5000 dilution

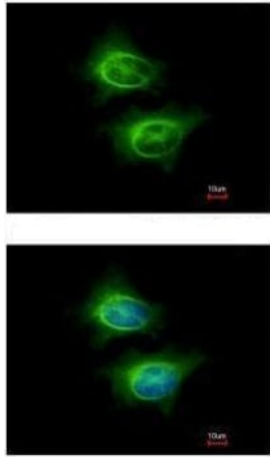
Lane 1 : HeLa (human epithelial cell line from cervix adenocarcinoma) whole cell lysate

Lane 2 : HepG2 (human liver hepatocellular carcinoma cell line) whole cell lysate

Lysates/proteins at 30 µg per lane.

Predicted band size: 86 kDa

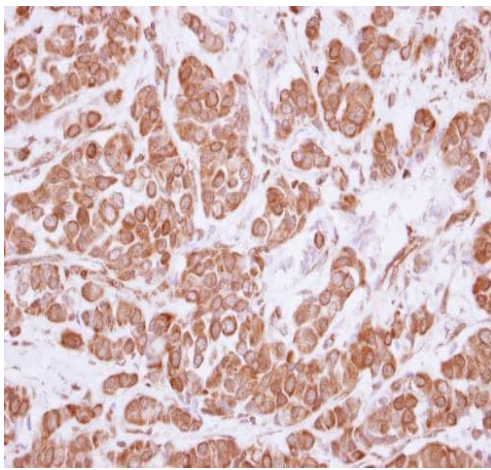
7.5% SDS-PAGE gel.



Methanol-fixed HeLa (human epithelial cell line from cervix adenocarcinoma) cells stained for ASC2 (green) using ab228827 at 1/500 dilution in ICC/IF.

Blue: Hoechst 33342 staining.

Immunocytochemistry/ Immunofluorescence - Anti-ASC2 antibody (ab228827)



Paraffin-embedded human breast cancer tissue stained for ASC2 using ab228827 at 1/500 dilution in immunohistochemical analysis.

Immunohistochemistry (Formalin/PFA-fixed paraffin-embedded sections) - Anti-ASC2 antibody (ab228827)

Please note: All products are "FOR RESEARCH USE ONLY. NOT FOR USE IN DIAGNOSTIC PROCEDURES"

Our Abpromise to you: Quality guaranteed and expert technical support

- Replacement or refund for products not performing as stated on the datasheet
- Valid for 12 months from date of delivery
- Response to your inquiry within 24 hours
- We provide support in Chinese, English, French, German, Japanese and Spanish
- Extensive multi-media technical resources to help you
- We investigate all quality concerns to ensure our products perform to the highest standards

If the product does not perform as described on this datasheet, we will offer a refund or replacement. For full details of the Abpromise, please visit <https://www.abcam.com/abpromise> or contact our technical team.

Terms and conditions

- Guarantee only valid for products bought direct from Abcam or one of our authorized distributors