

Product datasheet

Anti-ASH1L antibody ab234745

★★★★☆ [1 Abreviews](#) [3 Images](#)

Overview

Product name	Anti-ASH1L antibody
Description	Rabbit polyclonal to ASH1L
Host species	Rabbit
Tested applications	Suitable for: IHC-P, ICC/IF
Species reactivity	Reacts with: Human
Immunogen	Recombinant fragment corresponding to Human KMT2H/ ASH1 aa 1906-2160. Database link: Q9NR48
Positive control	IHC-P: Human glioma and melanoma tissue. ICC/IF: HeLa cells.
General notes	<p>The Life Science industry has been in the grips of a reproducibility crisis for a number of years. Abcam is leading the way in addressing this with our range of recombinant monoclonal antibodies and knockout edited cell lines for gold-standard validation. Please check that this product meets your needs before purchasing.</p> <p>If you have any questions, special requirements or concerns, please send us an inquiry and/or contact our Support team ahead of purchase. Recommended alternatives for this product can be found below, along with publications, customer reviews and Q&As</p>

Properties

Form	Liquid
Storage instructions	Shipped at 4°C. Store at +4°C short term (1-2 weeks). Upon delivery aliquot. Store at -20°C long term. Avoid freeze / thaw cycle.
Storage buffer	pH: 7.40 Preservative: 0.03% Proclin 300 Constituents: PBS, 50% Glycerol (glycerin, glycerine)
Purity	Protein G purified
Clonality	Polyclonal
Isotype	IgG

Applications

The Abpromise guarantee

Our **Abpromise guarantee** covers the use of ab234745 in the following tested applications.

The application notes include recommended starting dilutions; optimal dilutions/concentrations should be determined by the end user.

Application	Abreviews	Notes
IHC-P	★★★★★ (1)	1/20 - 1/200.
ICC/IF		1/50 - 1/200.

Target

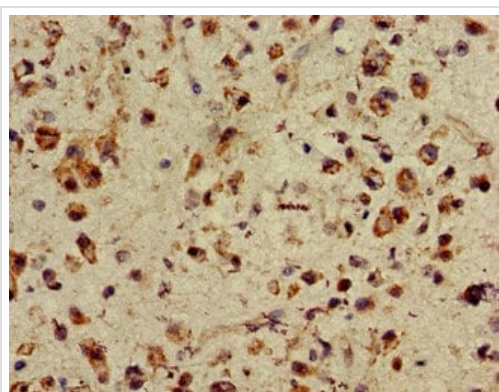
Function Histone methyltransferase. Probably methylates 'Lys-4' of histone H3, a specific tag for epigenetic transcriptional activation.

Tissue specificity Widely expressed, with highest level in brain, heart and kidney.

Sequence similarities Belongs to the histone-lysine methyltransferase family. SET2 subfamily. Contains 3 A.T hook DNA-binding domains. Contains 1 AWS domain. Contains 1 BAH domain. Contains 1 bromo domain. Contains 1 PHD-type zinc finger. Contains 1 post-SET domain. Contains 1 SET domain.

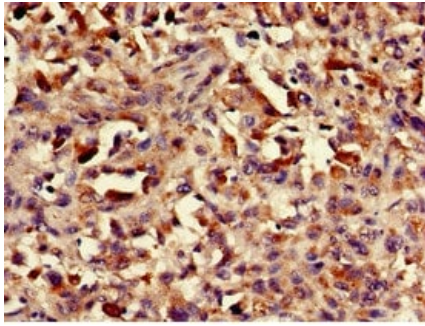
Cellular localization Nucleus. Cell junction > tight junction. Chromosome. The relevance of tight junction localization is however unclear.

Images



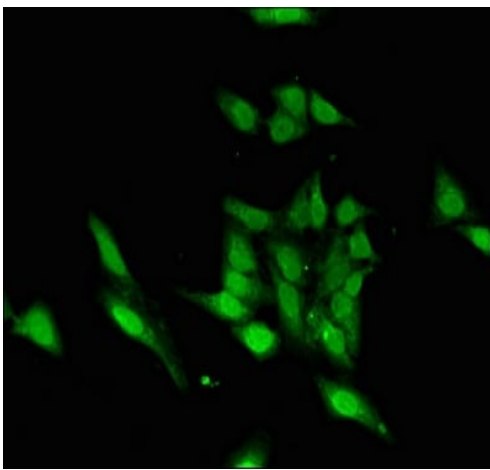
Paraffin-embedded human glioma tissue stained for KMT2H / ASH1 using ab234745 at 1/100 dilution in immunohistochemical analysis.

Immunohistochemistry (Formalin/PFA-fixed paraffin-embedded sections) - Anti-ASH1L antibody (ab234745)



Paraffin-embedded human melanoma tissue stained for KMT2H / ASH1 using ab234745 at 1/100 dilution in immunohistochemical analysis.

Immunohistochemistry (Formalin/PFA-fixed paraffin-embedded sections) - Anti-ASH1L antibody (ab234745)



HeLa (human epithelial cell line from cervix adenocarcinoma) cells labelling KMT2H / ASH1 (green) using ab234745 at 1/100 dilution in ICC/IF analysis.

Immunocytochemistry/ Immunofluorescence - Anti-ASH1L antibody (ab234745)

Please note: All products are "FOR RESEARCH USE ONLY. NOT FOR USE IN DIAGNOSTIC PROCEDURES"

Our Abpromise to you: Quality guaranteed and expert technical support

- Replacement or refund for products not performing as stated on the datasheet
- Valid for 12 months from date of delivery
- Response to your inquiry within 24 hours

- We provide support in Chinese, English, French, German, Japanese and Spanish
- Extensive multi-media technical resources to help you
- We investigate all quality concerns to ensure our products perform to the highest standards

If the product does not perform as described on this datasheet, we will offer a refund or replacement. For full details of the Abpromise, please visit <https://www.abcam.com/abpromise> or contact our technical team.

Terms and conditions

- Guarantee only valid for products bought direct from Abcam or one of our authorized distributors