

Product datasheet

Anti-ASH2L antibody [EPR13106] ab181117

Recombinant RabMAb

[1 References](#) [5 Images](#)

Overview

Product name	Anti-ASH2L antibody [EPR13106]
Description	Rabbit monoclonal [EPR13106] to ASH2L
Host species	Rabbit
Tested applications	Suitable for: Flow Cyt (Intra), WB, ICC/IF, IP
Species reactivity	Reacts with: Rat, Human
Immunogen	Synthetic peptide. This information is proprietary to Abcam and/or its suppliers.
Positive control	HeLa cells, 293T cell line lysate, K562 cell line lysate, C6 cell line lysate, PC12 cell line lysate.
General notes	<p>This product is a recombinant monoclonal antibody, which offers several advantages including:</p> <ul style="list-style-type: none"> - High batch-to-batch consistency and reproducibility - Improved sensitivity and specificity - Long-term security of supply - Animal-free production <p>For more information see here.</p> <p>Our RabMAb[®] technology is a patented hybridoma-based technology for making rabbit monoclonal antibodies. For details on our patents, please refer to RabMAb[®] patents.</p>

Properties

Form	Liquid
Storage instructions	Shipped at 4°C. Store at +4°C short term (1-2 weeks). Upon delivery aliquot. Store at -20°C long term. Avoid freeze / thaw cycle.
Storage buffer	<p>Preservative: 0.01% Sodium azide</p> <p>Constituents: 59% PBS, 40% Glycerol (glycerin, glycerine), 0.05% BSA</p>
Purity	Tissue culture supernatant
Clonality	Monoclonal
Clone number	EPR13106
Isotype	IgG

Applications

Applications

The Abpromise guarantee

Our **Abpromise guarantee** covers the use of ab181117 in the following tested applications.

The application notes include recommended starting dilutions; optimal dilutions/concentrations should be determined by the end user.

Application	Abreviews	Notes
Flow Cyt (Intra)		1/20. ab172730 - Rabbit monoclonal IgG, is suitable for use as an isotype control with this antibody.
WB		1/1000 - 1/10000. Detects a band of approximately 80 kDa (predicted molecular weight: 69 kDa).
ICC/IF		1/50 - 1/100.
IP		1/60.

Target

Function

Component of the Set1/Ash2 histone methyltransferase (HMT) complex, a complex that specifically methylates 'Lys-4' of histone H3, but not if the neighboring 'Lys-9' residue is already methylated. As part of the MLL1/MLL complex it is involved in methylation and dimethylation at 'Lys-4' of histone H3. May function as a transcriptional regulator. May play a role in hematopoiesis.

Tissue specificity

Ubiquitously expressed. Predominantly expressed in adult heart and testis and fetal lung and liver, with barely detectable expression in adult lung, liver, kidney, prostate, and peripheral leukocytes.

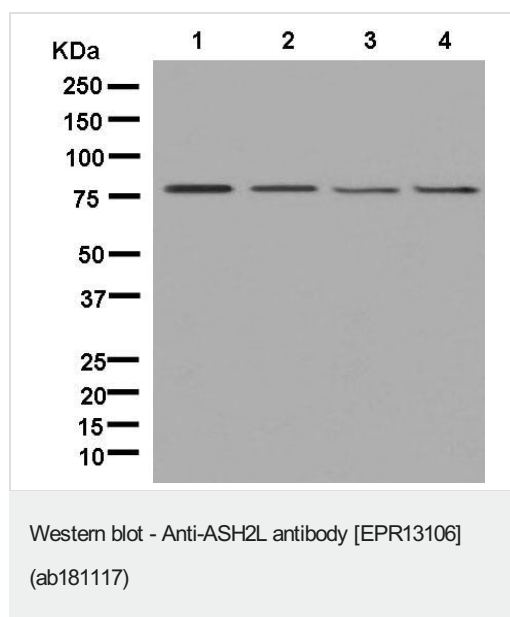
Sequence similarities

Contains 1 B30.2/SPRY domain.

Cellular localization

Nucleus.

Images



All lanes : Anti-ASH2L antibody [EPR13106] (ab181117) at 1/10000 dilution

Lane 1 : 293T cell lysate

Lane 2 : K562 cell lysate

Lane 3 : C6 cell lysate

Lane 4 : PC-12 cell lysate

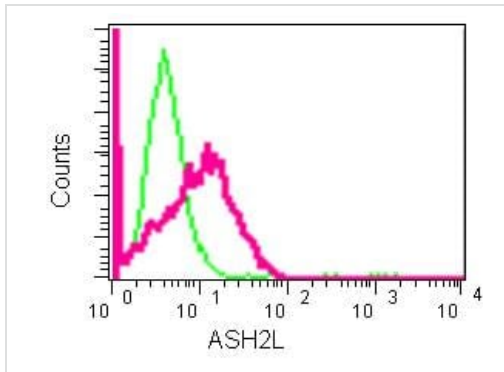
Lysates/proteins at 20 µg per lane.

Secondary

All lanes : Goat Anti-Rabbit IgG, (H+L), Peroxidase conjugated at 1/1000 dilution

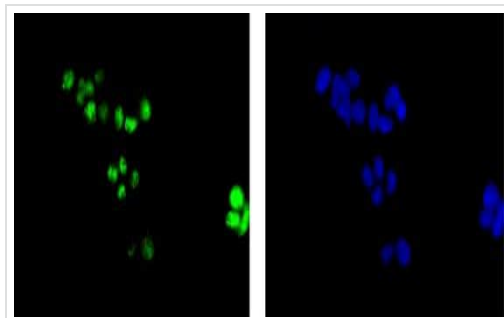
Predicted band size: 69 kDa

Observed band size: 80 kDa



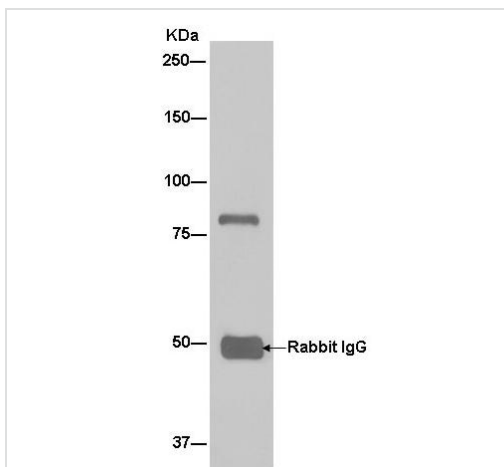
Flow Cytometry (Intracellular) - Anti-ASH2L antibody
[EPR13106] (ab181117)

Intracellular flow cytometric analysis of 2% paraformaldehyde fixed HeLa cells labeling ASH2L with ab181117 at 1/20 followed by Goat anti rabbit IgG (FITC) at 1/150 (pink). Rabbit monoclonal IgG was used as Isotype control (green).



Immunocytochemistry/ Immunofluorescence - Anti-
ASH2L antibody [EPR13106] (ab181117)

Immunofluorescent analysis of acetone fixed HeLa cells labeling ASH2L with ab181117 at 1/100 (green). Staining with Dapi is shown in blue.



Immunoprecipitation - Anti-ASH2L antibody
[EPR13106] (ab181117)

Immunoprecipitation analysis of 293T cells labeling ASH2L using ab181117 at 1/60 dilution. A Goat Anti-Rabbit IgG, (H+L), Peroxidase conjugated at 1/2000 was used as secondary antibody.

Why choose a recombinant antibody?



Research with confidence
Consistent and reproducible results



Long-term and scalable supply
Recombinant technology



Success from the first experiment
Confirmed specificity



Ethical standards compliant
Animal-free production

Anti-ASH2L antibody [EPR13106] (ab181117)

Please note: All products are "FOR RESEARCH USE ONLY. NOT FOR USE IN DIAGNOSTIC PROCEDURES"

Our Abpromise to you: Quality guaranteed and expert technical support

- Replacement or refund for products not performing as stated on the datasheet
- Valid for 12 months from date of delivery
- Response to your inquiry within 24 hours
- We provide support in Chinese, English, French, German, Japanese and Spanish
- Extensive multi-media technical resources to help you
- We investigate all quality concerns to ensure our products perform to the highest standards

If the product does not perform as described on this datasheet, we will offer a refund or replacement. For full details of the Abpromise, please visit <https://www.abcam.com/abpromise> or contact our technical team.

Terms and conditions

- Guarantee only valid for products bought direct from Abcam or one of our authorized distributors