

Product datasheet

Anti-Asialoglycoprotein Receptor 1/HL-1 antibody ab127896

★★★★★ [3 Abreviews](#) [4 Images](#)

Overview

Product name	Anti-Asialoglycoprotein Receptor 1/HL-1 antibody
Description	Rabbit polyclonal to Asialoglycoprotein Receptor 1/HL-1
Host species	Rabbit
Tested applications	Suitable for: ICC/IF, WB
Species reactivity	Reacts with: Mouse, Human
Immunogen	Recombinant fragment corresponding to Human Asialoglycoprotein Receptor 1/HL-1 aa 25-241. Database link: P07306
Positive control	WB: HepG2 and Mouse NIH/3T3 cell lysates. Mouse liver tissue extract. ICC/IF: HepG2 cells.
General notes	<p>The Life Science industry has been in the grips of a reproducibility crisis for a number of years. Abcam is leading the way in addressing this with our range of recombinant monoclonal antibodies and knockout edited cell lines for gold-standard validation. Please check that this product meets your needs before purchasing.</p> <p>If you have any questions, special requirements or concerns, please send us an inquiry and/or contact our Support team ahead of purchase. Recommended alternatives for this product can be found below, along with publications, customer reviews and Q&As</p>

Properties

Form	Liquid
Storage instructions	Shipped at 4°C. Store at +4°C short term (1-2 weeks). Upon delivery aliquot. Store at -20°C or -80°C. Avoid freeze / thaw cycle.
Storage buffer	pH: 7.00 Preservative: 0.025% Proclin 300 Constituents: 78% PBS, 1% BSA, 20% Glycerol (glycerin, glycerine)
Purity	Immunogen affinity purified
Clonality	Polyclonal
Isotype	IgG

Applications

Applications

The Abpromise guarantee

Our **Abpromise guarantee** covers the use of ab127896 in the following tested applications.

The application notes include recommended starting dilutions; optimal dilutions/concentrations should be determined by the end user.

Application	Abreviews	Notes
ICC/IF	★★★★★ (1)	1/100 - 1/1000.
WB	★★★★★ (2)	1/500 - 1/3000. Predicted molecular weight: 33 kDa.

Target

Function

Mediates the endocytosis of plasma glycoproteins to which the terminal sialic acid residue on their complex carbohydrate moieties has been removed. The receptor recognizes terminal galactose and N-acetylgalactosamine units. After ligand binding to the receptor, the resulting complex is internalized and transported to a sorting organelle, where receptor and ligand are disassociated. The receptor then returns to the cell membrane surface.

Tissue specificity

Expressed exclusively in hepatic parenchymal cells.

Sequence similarities

Contains 1 C-type lectin domain.

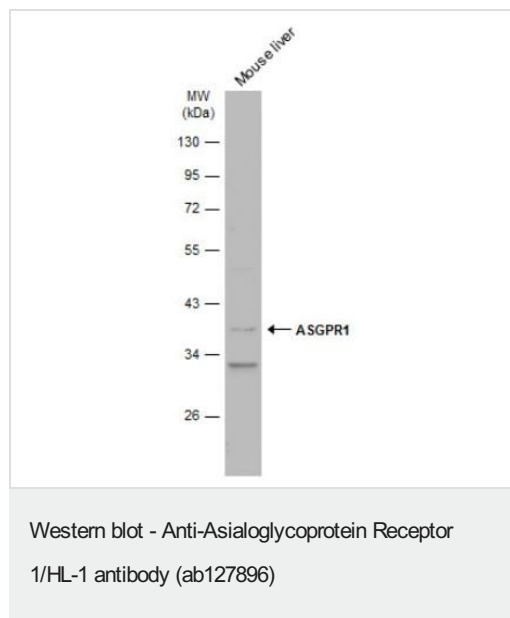
Post-translational modifications

Phosphorylated on a cytoplasmic Ser residue.

Cellular localization

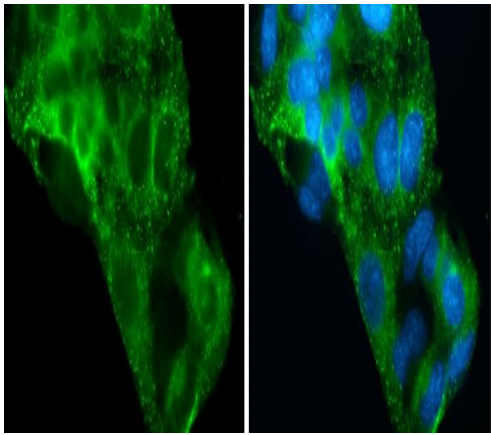
Membrane.

Images



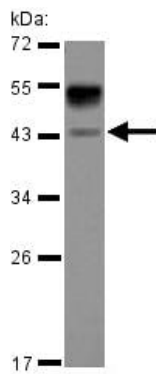
Anti-Asialoglycoprotein Receptor 1/HL-1 antibody (ab127896) at 1/3000 dilution + Mouse liver tissue extract at 50 µg

Predicted band size: 33 kDa



HepG2 cells stained for ASGPR1 (green) using ab127896 at 1/500 dilution in ICC/IF. Counterstaining using Hoechst 33342 staining (blue).

Immunocytochemistry/ Immunofluorescence - Anti-Asialoglycoprotein Receptor 1/HL-1 antibody (ab127896)



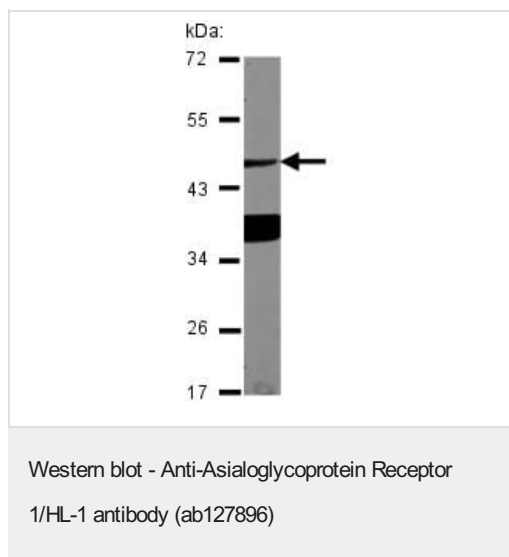
Anti-Asialoglycoprotein Receptor 1/HL-1 antibody (ab127896) at 1/3000 dilution + HepG2 whole cell lysate at 30 µg

Developed using the ECL technique.

Predicted band size: 33 kDa

Western blot - Anti-Asialoglycoprotein Receptor 1/HL-1 antibody (ab127896)

12% SDS Page



Anti-Asialoglycoprotein Receptor 1/HL-1 antibody (ab127896) at 1/1000 dilution + Mouse NIH/3T3 whole cell lysate at 30 µg

Developed using the ECL technique.

Predicted band size: 33 kDa

12% SDS Page

Please note: All products are "FOR RESEARCH USE ONLY. NOT FOR USE IN DIAGNOSTIC PROCEDURES"

Our Abpromise to you: Quality guaranteed and expert technical support

- Replacement or refund for products not performing as stated on the datasheet
- Valid for 12 months from date of delivery
- Response to your inquiry within 24 hours
- We provide support in Chinese, English, French, German, Japanese and Spanish
- Extensive multi-media technical resources to help you
- We investigate all quality concerns to ensure our products perform to the highest standards

If the product does not perform as described on this datasheet, we will offer a refund or replacement. For full details of the Abpromise, please visit <https://www.abcam.com/abpromise> or contact our technical team.

Terms and conditions

- Guarantee only valid for products bought direct from Abcam or one of our authorized distributors