


Product datasheet

Anti-Asialoglycoprotein Receptor 1/HL-1 antibody ab88042

★★★★☆ [4 Abreviews](#) [5 References](#) [3 Images](#)

Overview

Product name	Anti-Asialoglycoprotein Receptor 1/HL-1 antibody
Description	Rabbit polyclonal to Asialoglycoprotein Receptor 1/HL-1
Host species	Rabbit
Specificity	From Jan 2024, QC testing of replenishment batches of this polyclonal changed. All tested and expected application and reactive species combinations are still covered by our Abcam product promise. However, we no longer test all applications. For more information on a specific batch, please contact our Scientific Support who will be happy to help. You may also be interested in our alternative recombinant antibody, ab254261 .
Tested applications	Suitable for: IHC-P, WB
Species reactivity	Reacts with: Human Predicted to work with: Orangutan 
Immunogen	Synthetic peptide. This information is proprietary to Abcam and/or its suppliers. (Peptide available as ab98248)
Positive control	This antibody gave a positive signal in HepG2 whole cell lysate and FFPE human liver tissue sections.
General notes	<p>The Life Science industry has been in the grips of a reproducibility crisis for a number of years. Abcam is leading the way in addressing this with our range of recombinant monoclonal antibodies and knockout edited cell lines for gold-standard validation. Please check that this product meets your needs before purchasing.</p> <p>If you have any questions, special requirements or concerns, please send us an inquiry and/or contact our Support team ahead of purchase. Recommended alternatives for this product can be found below, along with publications, customer reviews and Q&As</p>

Properties

Form	Liquid
Storage instructions	Shipped at 4°C. Store at +4°C short term (1-2 weeks). Upon delivery aliquot. Store at -20°C or -80°C. Avoid freeze / thaw cycle.
Storage buffer	pH: 7.40 Preservative: 0.02% Sodium azide

Constituent: PBS

Batches of this product that have a concentration < 1mg/ml may have BSA added as a stabilising agent. If you would like information about the formulation of a specific lot, please contact our scientific support team who will be happy to help.

Purity	Immunogen affinity purified
Clonality	Polyclonal
Isotype	IgG

Applications

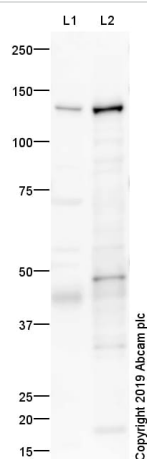
The Abpromise guarantee Our **Abpromise guarantee** covers the use of ab88042 in the following tested applications. The application notes include recommended starting dilutions; optimal dilutions/concentrations should be determined by the end user.

Application	Abreviews	Notes
IHC-P		Use a concentration of 5 µg/ml. Perform heat mediated antigen retrieval before commencing with IHC staining protocol.
WB	★★★★★ (1)	Use a concentration of 1 µg/ml. Detects a band of approximately 46 kDa (predicted molecular weight: 33 kDa).

Target

Function	Mediates the endocytosis of plasma glycoproteins to which the terminal sialic acid residue on their complex carbohydrate moieties has been removed. The receptor recognizes terminal galactose and N-acetylgalactosamine units. After ligand binding to the receptor, the resulting complex is internalized and transported to a sorting organelle, where receptor and ligand are disassociated. The receptor then returns to the cell membrane surface.
Tissue specificity	Expressed exclusively in hepatic parenchymal cells.
Sequence similarities	Contains 1 C-type lectin domain.
Post-translational modifications	Phosphorylated on a cytoplasmic Ser residue.
Cellular localization	Membrane.

Images



Western blot - Anti-Asialoglycoprotein Receptor 1/HL-1 antibody (ab88042)

All lanes : Anti-Asialoglycoprotein Receptor 1/HL-1 antibody (ab88042) at 1 µg/ml

Lane 1 : Human Liver Tissue Lysate

Lane 2 : HepG2 Whole Cell Lysate

Lysates/proteins at 10 µg per lane.

Secondary

All lanes : Goat polyclonal to Rabbit IgG - H&L - Pre-Adsorbed (HRP) at 1/50000 dilution

Developed using the ECL technique.

Performed under reducing conditions.

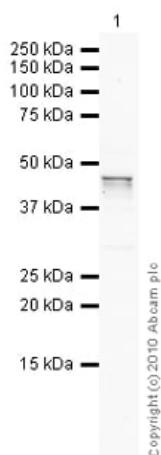
Predicted band size: 33 kDa

Observed band size: 44,48 kDa

Additional bands at: 140 kDa. We are unsure as to the identity of these extra bands.

Exposure time: 8 minutes

This blot was produced using a 4-12% Bis-tris gel under the MOPS buffer system. The gel was run at 200V for 50 minutes before being transferred onto a Nitrocellulose membrane at 30V for 70 minutes. The membrane was then blocked for an hour using 1% Milk/TBST before being incubated with ab88042 overnight at 4°C. Antibody binding was detected using an anti-rabbit antibody conjugated to HRP, and visualised using ECL development solution **ab133406**



Western blot - Anti-Asialoglycoprotein Receptor 1/HL-1 antibody (ab88042)

Anti-Asialoglycoprotein Receptor 1/HL-1 antibody (ab88042) at 1 µg/ml + HepG2 (Human hepatocellular liver carcinoma cell line) Whole Cell Lysate at 10 µg

Secondary

Goat polyclonal to Rabbit IgG - H&L - Pre-Adsorbed (HRP) at 1/3000 dilution

Developed using the ECL technique.

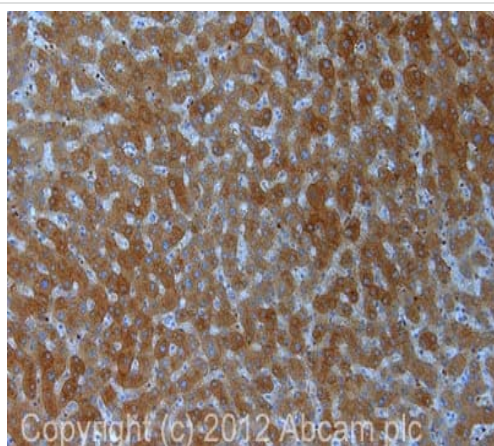
Performed under reducing conditions.

Predicted band size: 33 kDa

Observed band size: 46 kDa

Exposure time: 4 minutes

The predicted molecular weight of Human Asialoglycoprotein Receptor 1 / HL-1 is 33 kDa (SwissProt), however we expect to observe a banding pattern at 46 kDa. Abcam welcomes customer feedback and would appreciate any comments regarding this product and the data presented above.



Immunohistochemistry (Formalin/PFA-fixed paraffin-embedded sections) - Anti-Asialoglycoprotein Receptor 1/HL-1 antibody (ab88042)

IHC image of ab88042 staining in human liver formalin fixed paraffin embedded tissue section, performed on a Leica Bond™ system using the standard protocol F. The section was pre-treated using heat mediated antigen retrieval with sodium citrate buffer (pH6, epitope retrieval solution 1) for 20 mins. The section was then incubated with ab88042, 5µg/ml, for 15 mins at room temperature and detected using an HRP conjugated compact polymer system. DAB was used as the chromogen. The section was then counterstained with haematoxylin and mounted with DPX.

For other IHC staining systems (automated and non-automated) customers should optimize variable parameters such as antigen retrieval conditions, primary antibody concentration and antibody incubation times.

Please note: All products are "FOR RESEARCH USE ONLY. NOT FOR USE IN DIAGNOSTIC PROCEDURES"

Our Abpromise to you: Quality guaranteed and expert technical support

- Replacement or refund for products not performing as stated on the datasheet
- Valid for 12 months from date of delivery
- Response to your inquiry within 24 hours

- We provide support in Chinese, English, French, German, Japanese and Spanish
- Extensive multi-media technical resources to help you
- We investigate all quality concerns to ensure our products perform to the highest standards

If the product does not perform as described on this datasheet, we will offer a refund or replacement. For full details of the Abpromise, please visit <https://www.abcam.com/abpromise> or contact our technical team.

Terms and conditions

- Guarantee only valid for products bought direct from Abcam or one of our authorized distributors