

# Anti-Asialoglycoprotein Receptor 1/HL-1 antibody [EPR22642-17] - BSA and Azide free ab256509

Recombinant RabMAb

8 Images

## Overview

<b>Product name</b>	Anti-Asialoglycoprotein Receptor 1/HL-1 antibody [EPR22642-17] - BSA and Azide free
<b>Description</b>	Rabbit monoclonal [EPR22642-17] to Asialoglycoprotein Receptor 1/HL-1 - BSA and Azide free
<b>Host species</b>	Rabbit
<b>Tested applications</b>	<b>Suitable for:</b> WB, ICC/IF, IHC-P, Flow Cyt, IP
<b>Species reactivity</b>	<b>Reacts with:</b> Human
<b>Immunogen</b>	Recombinant fragment. This information is proprietary to Abcam and/or its suppliers.
<b>Positive control</b>	IHC-P: Human liver and liver cancer tissue. ICC/IF: HepG2 cells. Flow: HepG2 cells. IP: HepG2 whole cell lysate.
<b>General notes</b>	ab256509 is the carrier-free version of <a href="#">ab254262</a> .

Our **carrier-free** antibodies are typically supplied in a PBS-only formulation, purified and free of BSA, sodium azide and glycerol. The carrier-free buffer and high concentration allow for increased conjugation efficiency.

This conjugation-ready format is designed for use with fluorochromes, metal isotopes, oligonucleotides, and enzymes, which makes them ideal for antibody labelling, functional and cell-based assays, flow-based assays (e.g. mass cytometry) and Multiplex Imaging applications.

Use our **conjugation kits** for antibody conjugates that are ready-to-use in as little as 20 minutes with <1 minute hands-on-time and 100% antibody recovery: available for fluorescent dyes, HRP, biotin and gold.

This product is compatible with the Maxpar<sup>®</sup> Antibody Labeling Kit from Fluidigm, without the need for antibody preparation. Maxpar<sup>®</sup> is a trademark of Fluidigm Canada Inc.

This product is a recombinant monoclonal antibody, which offers several advantages including:

- High batch-to-batch consistency and reproducibility
- Improved sensitivity and specificity
- Long-term security of supply
- Animal-free production

For more information [see here](#).

Our RabMAb<sup>®</sup> technology is a patented hybridoma-based technology for making rabbit monoclonal antibodies. For details on our patents, please refer to [RabMAb<sup>®</sup> patents](#).

## Properties

Form	Liquid
Storage instructions	Shipped at 4°C. Store at +4°C. Do Not Freeze.
Storage buffer	pH: 7.2 Constituent: PBS
Carrier free	Yes
Purity	Protein A purified
Clonality	Monoclonal
Clone number	EPR22642-17
Isotype	IgG

## Applications

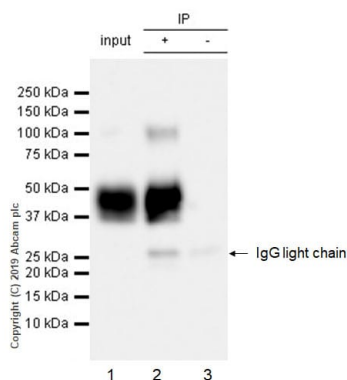
**The Abpromise guarantee** Our **Abpromise guarantee** covers the use of ab256509 in the following tested applications. The application notes include recommended starting dilutions; optimal dilutions/concentrations should be determined by the end user.

Application	Abreviews	Notes
WB		Use at an assay dependent concentration. Detects a band of approximately 40-50 kDa (predicted molecular weight: 33 kDa).
ICC/IF		Use at an assay dependent concentration.
IHC-P		Use at an assay dependent concentration. Perform heat mediated antigen retrieval with Tris/EDTA buffer pH 9.0 before commencing with IHC staining protocol.
Flow Cyt		Use at an assay dependent concentration.
IP		Use at an assay dependent concentration.

## Target

Function	Mediates the endocytosis of plasma glycoproteins to which the terminal sialic acid residue on their complex carbohydrate moieties has been removed. The receptor recognizes terminal galactose and N-acetylgalactosamine units. After ligand binding to the receptor, the resulting complex is internalized and transported to a sorting organelle, where receptor and ligand are disassociated. The receptor then returns to the cell membrane surface.
Tissue specificity	Expressed exclusively in hepatic parenchymal cells.
Sequence similarities	Contains 1 C-type lectin domain.
Post-translational modifications	Phosphorylated on a cytoplasmic Ser residue.
Cellular localization	Membrane.

Images



Immunoprecipitation - Anti-Asialoglycoprotein Receptor 1/HL-1 antibody [EPR22642-17] - BSA and Azide free (ab256509)

Asialoglycoprotein Receptor 1/HL-1 antibody was immunoprecipitated from 0.35 mg HepG2 (Human hepatocellular carcinoma epithelial cell) whole cell lysate 10µg with **ab254262** at 1/30 dilution (2µg in 0.35mg lysates). Western blot was performed on the immunoprecipitate using **ab254262** at 1/1000 dilution. VeriBlot for IP Detection Reagent (HRP) (**ab131366**) was used as the secondary antibody at 1/5000 dilution.

**Lane 1:** HepG2 (Human hepatocellular carcinoma epithelial cell) whole cell lysate 10µg

**Lane 2:** **ab254262** IP in HepG2 whole cell lysate

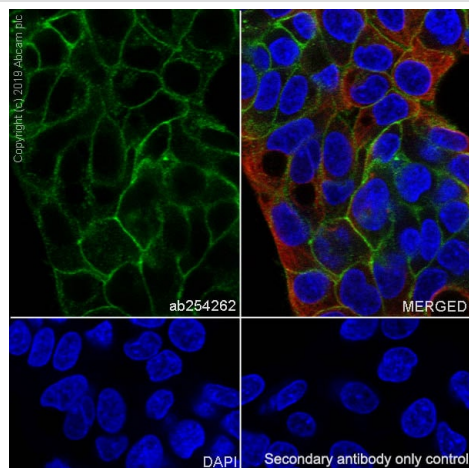
**Lane 3:** Rabbit monoclonal IgG (**ab172730**) instead of **ab254262** in HepG2 whole cell lysate.

Blocking and dilution buffer and concentration: 5% NFDm/TBST.

Exposure time: 7 seconds.

The band at around 100kDa is described as dimers (PMID: 7663158).

This data was developed using the same antibody clone in a different buffer formulation containing PBS, BSA, glycerol, and sodium azide (**ab254262**).



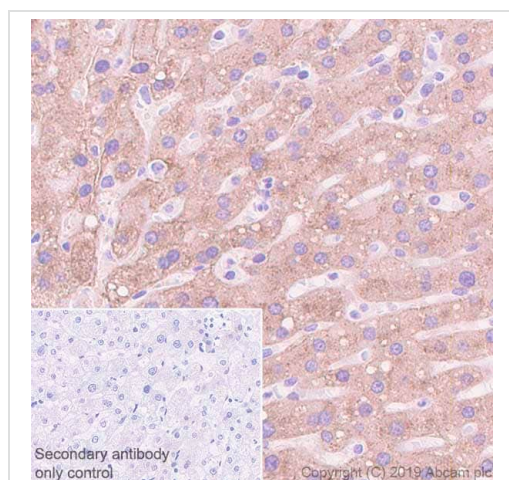
Immunocytochemistry/ Immunofluorescence - Anti-Asialoglycoprotein Receptor 1/HL-1 antibody [EPR22642-17] - BSA and Azide free (ab256509)

Immunofluorescent analysis of 4% Paraformaldehyde-fixed, 0.1% TritonX-100 permeabilized HepG2 (human hepatocellular carcinoma epithelial cell line) cells labelling Asialoglycoprotein Receptor 1/HL-1 antibody with **ab254262** at 1/100 dilution, followed by **ab150077** AlexaFluor®488 Goat anti-Rabbit secondary antibody at 1/1000 dilution (Green). Confocal image showing membranous and weak cytoplasmic staining in HepG2 cells is observed.

**ab195889** Anti-alpha Tubulin antibody [DM1A] - Microtubule Marker (Alexa Fluor® 594) was used to counterstain tubulin at 1/200 dilution (Red). The Nuclear counterstain was DAPI (Blue).

Secondary antibody only control: Used PBS instead of primary antibody, secondary antibody is **ab150077** AlexaFluor®488 Goat anti-Rabbit secondary at 1/1000 dilution.

This data was developed using the same antibody clone in a different buffer formulation containing PBS, BSA, glycerol, and sodium azide (**ab254262**).



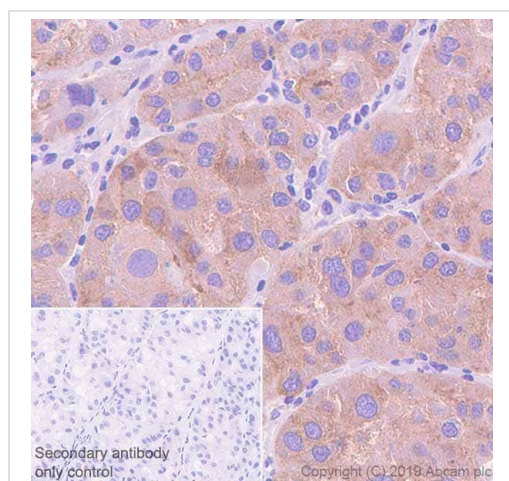
Immunohistochemistry (Formalin/PFA-fixed paraffin-embedded sections) - Anti-Asialoglycoprotein Receptor 1/HL-1 antibody [EPR22642-17] - BSA and Azide free (ab256509)

Immunohistochemical analysis of paraffin-embedded Human liver tissue labeling Asialoglycoprotein Receptor 1/HL-1 antibody with **ab254262** at 1/1000 dilution (0.5 µg/ml) followed by a Rabbit specific IHC polymer detection kit HRP/DAB (**ab209101**). Positive staining in human liver (PMID:23979840, 26422581, 27241665) is observed.

The section was incubated with **ab254262** for 15 mins at room temperature. The immunostaining was performed on a Leica Biosystems BOND® RX instrument. Counterstained with Hematoxylin. Heat mediated antigen retrieval with Tris-EDTA buffer (pH 9.0, epitope retrieval solution 2) for 20 mins.

Secondary antibody only control: Used PBS instead of primary antibody, secondary antibody is Rabbit specific IHC polymer detection kit HRP/DAB (**ab209101**).

This data was developed using the same antibody clone in a different buffer formulation containing PBS, BSA, glycerol, and sodium azide (**ab254262**).



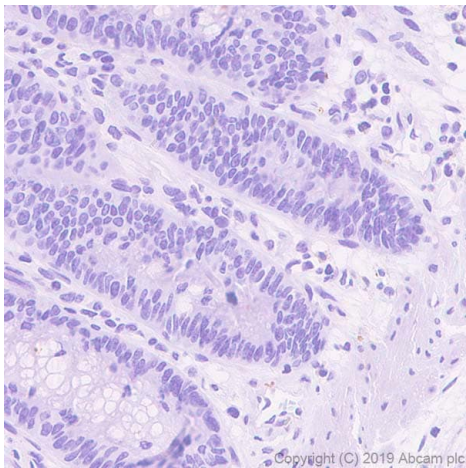
Immunohistochemistry (Formalin/PFA-fixed paraffin-embedded sections) - Anti-Asialoglycoprotein Receptor 1/HL-1 antibody [EPR22642-17] - BSA and Azide free (ab256509)

Immunohistochemical analysis of paraffin-embedded Human liver cancer tissue labeling Asialoglycoprotein Receptor 1/HL-1 antibody with **ab254262** at 1/1000 dilution (0.5 µg/ml) followed by a ready to use Rabbit specific IHC polymer detection kit HRP/DAB (**ab209101**). Positive staining in human liver cancer (PMID:23979840,26422581,27241665) is observed.

The section was incubated with **ab254262** for 15 mins at room temperature. The immunostaining was performed on a Leica Biosystems BOND® RX instrument. Counterstained with Hematoxylin. Heat mediated antigen retrieval with Tris-EDTA buffer (pH 9.0, epitope retrieval solution 2) for 20 mins.

Secondary antibody only control: Used PBS instead of primary antibody, secondary antibody is a ready to use Rabbit specific IHC polymer detection kit HRP/DAB (**ab209101**).

This data was developed using the same antibody clone in a different buffer formulation containing PBS, BSA, glycerol, and sodium azide (**ab254262**).



Immunohistochemistry (Formalin/PFA-fixed paraffin-embedded sections) - Anti-Asialoglycoprotein Receptor 1/HL-1 antibody [EPR22642-17] - BSA and Azide free (ab256509)

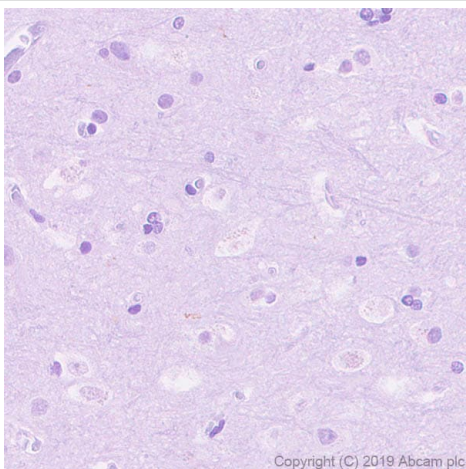
**Negative control:** No staining in human colon (PMID:23979840).

Immunohistochemical analysis of paraffin-embedded Human colon tissue labeling Asialoglycoprotein Receptor 1/HL-1 antibody with **ab254262** at 1/1000 dilution (0.5 µg/ml) followed by a ready to use Rabbit specific IHC polymer detection kit HRP/DAB (**ab209101**).

The section was incubated with **ab254262** for 15 mins at room temperature. The immunostaining was performed on a Leica Biosystems BOND® RX instrument. Counterstained with Hematoxylin. Heat mediated antigen retrieval with Tris-EDTA buffer (pH 9.0, epitope retrieval solution 2) for 20 mins.

Secondary antibody only control: Used PBS instead of primary antibody, secondary antibody is a ready to use Rabbit specific IHC polymer detection kit HRP/DAB (**ab209101**).

This data was developed using the same antibody clone in a different buffer formulation containing PBS, BSA, glycerol, and sodium azide (**ab254262**).



Immunohistochemistry (Formalin/PFA-fixed paraffin-embedded sections) - Anti-Asialoglycoprotein Receptor 1/HL-1 antibody [EPR22642-17] - BSA and Azide free (ab256509)

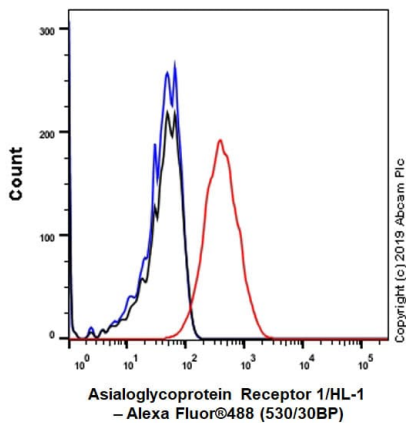
**Negative control:** No staining in human cerebrum (PMID:23979840)

Immunohistochemical analysis of paraffin-embedded Human cerebrum tissue labeling Asialoglycoprotein Receptor 1/HL-1 antibody with **ab254262** at 1/1000 dilution (0.5 µg/ml) followed by a ready to use Rabbit specific IHC polymer detection kit HRP/DAB (**ab209101**).

The section was incubated with **ab254262** for 15 mins at room temperature. The immunostaining was performed on a Leica Biosystems BOND® RX instrument. Counterstained with Hematoxylin. Heat mediated antigen retrieval with Tris-EDTA buffer (pH 9.0, epitope retrieval solution 2) for 20 mins.

Secondary antibody only control: Used PBS instead of primary antibody, secondary antibody is a ready to use Rabbit specific IHC polymer detection kit HRP/DAB (**ab209101**).

This data was developed using the same antibody clone in a different buffer formulation containing PBS, BSA, glycerol, and sodium azide (**ab254262**).



Flow Cytometry - Anti-Asialoglycoprotein Receptor 1/HL-1 antibody [EPR22642-17] - BSA and Azide free (ab256509)

Flow cytometric analysis of HepG2 (Human hepatocellular carcinoma epithelial cell line) cells labelling Asialoglycoprotein Receptor 1/HL-1 antibody with **ab254262** at 1/500 dilution (Red) compared with a Rabbit monoclonal IgG (**ab172730**, Black) isotype control and an unlabelled control (cells without incubation with primary antibody and secondary antibody) (Blue). Goat anti rabbit IgG (Alexa Fluor® 488, **ab150077**) at 1/2000 dilution was used as the secondary antibody. Gated on viable cells.

This data was developed using the same antibody clone in a different buffer formulation containing PBS, BSA, glycerol, and sodium azide (**ab254262**).

### Why choose a recombinant antibody?



Anti-Asialoglycoprotein Receptor 1/HL-1 antibody [EPR22642-17] - BSA and Azide free (ab256509)

**Please note:** All products are "FOR RESEARCH USE ONLY. NOT FOR USE IN DIAGNOSTIC PROCEDURES"

### Our Abpromise to you: Quality guaranteed and expert technical support

- Replacement or refund for products not performing as stated on the datasheet
- Valid for 12 months from date of delivery
- Response to your inquiry within 24 hours
- We provide support in Chinese, English, French, German, Japanese and Spanish
- Extensive multi-media technical resources to help you
- We investigate all quality concerns to ensure our products perform to the highest standards

If the product does not perform as described on this datasheet, we will offer a refund or replacement. For full details of the Abpromise, please visit <https://www.abcam.com/abpromise> or contact our technical team.

#### **Terms and conditions**

---

- Guarantee only valid for products bought direct from Abcam or one of our authorized distributors