




Product datasheet

Anti-Aspartate Aminotransferase antibody [C1] ab239487

KO VALIDATED

9 Images

Overview

Product name	Anti-Aspartate Aminotransferase antibody [C1]
Description	Mouse monoclonal [C1] to Aspartate Aminotransferase
Host species	Mouse
Tested applications	Suitable for: IHC-P, WB
Species reactivity	Reacts with: Mouse, Rat, Human, Pig Predicted to work with: Horse, Cow, Chimpanzee, Cynomolgus monkey, Orangutan 
Immunogen	Recombinant full length protein corresponding to Human Aspartate Aminotransferase aa 1-450. N-terminal His Tag. Expressed in E.coli. Database link: P17174
	 Run BLAST with  Run BLAST with
Positive control	WB: Recombinant Aspartate Aminotransferase protein; Human and mouse liver lysates; Rat liver, brain and heart lysate; Pig brain and heart lysate. HAP1, HeLa and Raw264.7 cell lysates. IHC-P: Human kidney tissue.
General notes	<p>The Life Science industry has been in the grips of a reproducibility crisis for a number of years. Abcam is leading the way in addressing this with our range of recombinant monoclonal antibodies and knockout edited cell lines for gold-standard validation. Please check that this product meets your needs before purchasing.</p> <p>If you have any questions, special requirements or concerns, please send us an inquiry and/or contact our Support team ahead of purchase. Recommended alternatives for this product can be found below, along with publications, customer reviews and Q&As</p>

Properties

Form	Liquid
Storage instructions	Shipped at 4°C. Store at +4°C short term (1-2 weeks). Upon delivery aliquot. Store at -20°C long term. Avoid freeze / thaw cycle.
Storage buffer	pH: 7.40 Preservative: 0.011% Proclin 300

	Constituents: 55.77% Glycerol (glycerin, glycerine), 44.219% PBS
Purity	Protein A/G purified
Purification notes	Purified from TCS.
Clonality	Monoclonal
Clone number	C1
Isotype	IgG2a
Light chain type	kappa

Applications

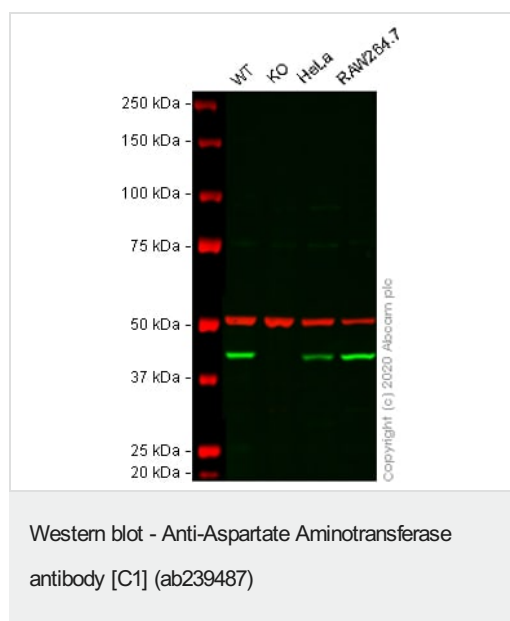
The Abpromise guarantee Our **Abpromise guarantee** covers the use of ab239487 in the following tested applications. The application notes include recommended starting dilutions; optimal dilutions/concentrations should be determined by the end user.

Application	Abreviews	Notes
IHC-P		Use a concentration of 5 - 30 µg/ml.
WB		Use a concentration of 0.5 - 5 µg/ml.

Target

Function	Plays a key role in amino acid metabolism.
Sequence similarities	Belongs to the class-I pyridoxal-phosphate-dependent aminotransferase family.
Cellular localization	Cytoplasm.

Images



All lanes : Anti-Aspartate Aminotransferase antibody [C1] (ab239487) at 0.5 µg/ml

Lane 1 : Wild-type HAP1 cell lysate

Lane 2 : GOT1 knockout HAP1 cell lysate

Lane 3 : HeLa cell lysate

Lane 4 : Raw264.7 cell lysate

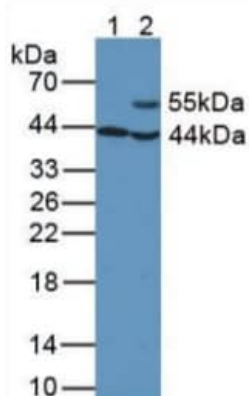
Lysates/proteins at 20 µg per lane.

Developed using the ECL technique.

Performed under reducing conditions.

Lanes 1 - 4: Merged signal (red and green). Green - ab239487 observed at 46 kDa. Red - loading control, **ab52866** (Rabbit anti-alpha Tubulin antibody [EP1332Y]) observed at 55kDa.

ab239487 was shown to react with Aspartate Aminotransferase in wild-type HAP1 cells in western blot. Loss of signal was observed when GOT1 knockout sample was used. Wild-type and GOT1 knockout HAP1 cell lysates were subjected to SDS-PAGE. Membranes were blocked in 3% milk in TBS-T (0.1% Tween®) before incubation with ab239487 and **ab52866** (Rabbit anti-alpha Tubulin antibody [EP1332Y]) overnight at 4°C at 0.5 µg/ml and a 1 in 20000 dilution respectively. Blots were incubated with Goat anti-Mouse IgG H&L (IRDye® 800CW) preabsorbed (**ab216772**) and Goat anti-Rabbit IgG H&L (IRDye® 680RD) preabsorbed (**ab216777**) secondary antibodies at 1 in 20000 dilution for 1 hour at room temperature before imaging.



Western blot - Anti-Aspartate Aminotransferase antibody [C1] (ab239487)

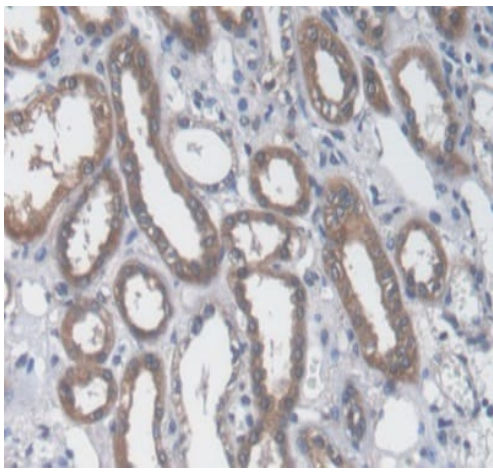
All lanes : Anti-Aspartate Aminotransferase antibody [C1] (ab239487) at 2 µg/ml

Lane 1 : Pig brain lysate

Lane 2 : Pig heart lysate

Secondary

All lanes : HRP-linked Rabbit anti-Mouse IgG at 1/5000 dilution



Immunohistochemistry (Formalin/PFA-fixed paraffin-embedded sections) - Anti-Aspartate Aminotransferase antibody [C1] (ab239487)

Paraffin-embedded human kidney tissue stained for Aspartate Aminotransferase using ab239487 at 20 µg/ml in immunohistochemical analysis. DAB staining.



Western blot - Anti-Aspartate Aminotransferase antibody [C1] (ab239487)

Anti-Aspartate Aminotransferase antibody [C1] (ab239487) at 3 µg/ml + Rat heart lysate

Secondary

HRP-linked caprine anti-mouse polyclonal IgG at 0.2 µg/ml

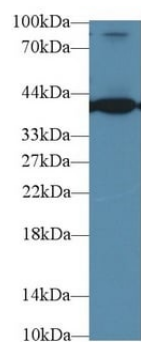


Western blot - Anti-Aspartate Aminotransferase antibody [C1] (ab239487)

Anti-Aspartate Aminotransferase antibody [C1] (ab239487) at 3 µg/ml + Rat brain lysate

Secondary

HRP-linked caprine anti-mouse polyclonal IgG at 0.2 µg/ml

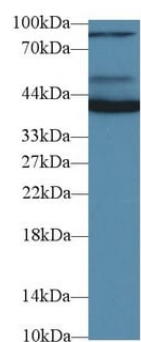


Western blot - Anti-Aspartate Aminotransferase antibody [C1] (ab239487)

Anti-Aspartate Aminotransferase antibody [C1] (ab239487) at 3 $\mu\text{g/ml}$ + Rat liver lysate

Secondary

HRP-linked caprine anti-mouse polyclonal IgG at 0.2 $\mu\text{g/ml}$



Western blot - Anti-Aspartate Aminotransferase antibody [C1] (ab239487)

Anti-Aspartate Aminotransferase antibody [C1] (ab239487) at 3 $\mu\text{g/ml}$ + Mouse liver lysate

Secondary

HRP-linked caprine anti-mouse polyclonal IgG at 0.2 $\mu\text{g/ml}$

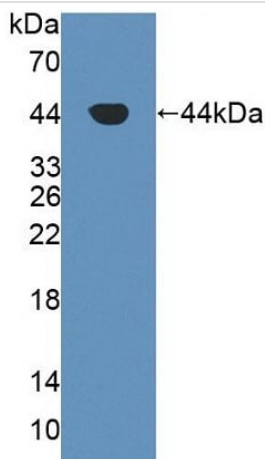


Western blot - Anti-Aspartate Aminotransferase antibody [C1] (ab239487)

Anti-Aspartate Aminotransferase antibody [C1] (ab239487) at 3 μ g/ml + Human liver lysate

Secondary

HRP-linked caprine anti-mouse polyclonal IgG at 0.2 μ g/ml



Western blot - Anti-Aspartate Aminotransferase antibody [C1] (ab239487)

Anti-Aspartate Aminotransferase antibody [C1] (ab239487) at 5 μ g/ml + Recombinant human aspartate aminotransferase protein

Please note: All products are "FOR RESEARCH USE ONLY. NOT FOR USE IN DIAGNOSTIC PROCEDURES"

Our Abpromise to you: Quality guaranteed and expert technical support

- Replacement or refund for products not performing as stated on the datasheet
- Valid for 12 months from date of delivery
- Response to your inquiry within 24 hours
- We provide support in Chinese, English, French, German, Japanese and Spanish
- Extensive multi-media technical resources to help you
- We investigate all quality concerns to ensure our products perform to the highest standards

If the product does not perform as described on this datasheet, we will offer a refund or replacement. For full details of the Abpromise, please visit <https://www.abcam.com/abpromise> or contact our technical team.

Terms and conditions

- Guarantee only valid for products bought direct from Abcam or one of our authorized distributors