


Anti-ASPP1 antibody ab71163

[2 References](#) [2 Images](#)

Overview

Product name	Anti-ASPP1 antibody
Description	Rabbit polyclonal to ASPP1
Host species	Rabbit
Tested applications	Suitable for: WB, IP
Species reactivity	Reacts with: Human Predicted to work with: Chimpanzee, Rhesus monkey, Gorilla, Orangutan 
Immunogen	A synthetic peptide corresponding to a region between residue 50 and 100 of human ASPP1 (NP_056131.1)
Positive control	Whole cell lysate from 293T cells and Hela cells.
General notes	<p>The Life Science industry has been in the grips of a reproducibility crisis for a number of years. Abcam is leading the way in addressing this with our range of recombinant monoclonal antibodies and knockout edited cell lines for gold-standard validation. Please check that this product meets your needs before purchasing.</p> <p>If you have any questions, special requirements or concerns, please send us an inquiry and/or contact our Support team ahead of purchase. Recommended alternatives for this product can be found below, along with publications, customer reviews and Q&As</p>

Properties

Form	Liquid
Storage instructions	Shipped at 4°C. Upon delivery aliquot and store at -20°C. Avoid freeze / thaw cycles.
Storage buffer	pH: 7 Preservative: 0.09% Sodium azide Constituents: 1.815% Tris, 1.764% Sodium citrate, 0.021% PBS
Purity	Immunogen affinity purified
Clonality	Polyclonal
Isotype	IgG

Applications

The Abpromise guarantee

Our **Abpromise guarantee** covers the use of ab71163 in the following tested applications.

The application notes include recommended starting dilutions; optimal dilutions/concentrations should be determined by the end user.

Application	Abreviews	Notes
WB		1/2000 - 1/10000. Detects a band of approximately 145 kDa (predicted molecular weight: 121 kDa).
IP		Use at 2-5 µg/mg of lysate.

Target

Function

Regulator that plays a central role in regulation of apoptosis via its interaction with p53/TP53. Regulates TP53 by enhancing the DNA binding and transactivation function of TP53 on the promoters of proapoptotic genes in vivo.

Tissue specificity

Reduced expression in breast carcinomas expressing a wild-type TP53 protein.

Sequence similarities

Belongs to the ASPP family.
Contains 2 ANK repeats.
Contains 1 SH3 domain.

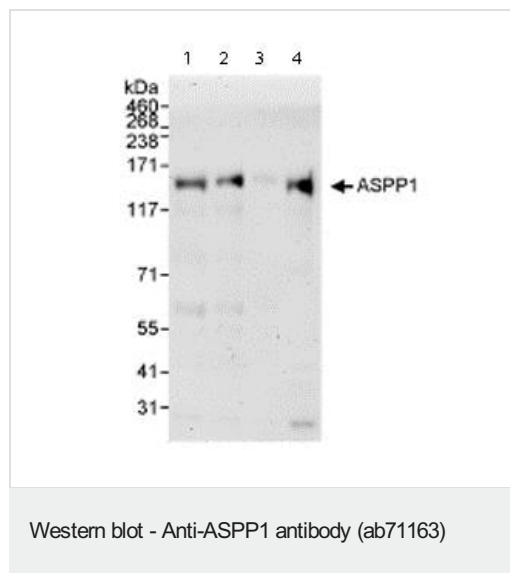
Domain

The ankyrin repeats and the SH3 domain are required for specific interactions with TP53.

Cellular localization

Cytoplasm. Nucleus. Predominantly cytoplasmic. Some fraction is nuclear.

Images



All lanes : Anti-ASPP1 antibody (ab71163) at 0.1 µg/ml

Lane 1 : Whole cell lysate from 293T cells at 50 µg

Lane 2 : Whole cell lysate from 293T cells at 15 µg

Lane 3 : Whole cell lysate from 293T cells at 5 µg

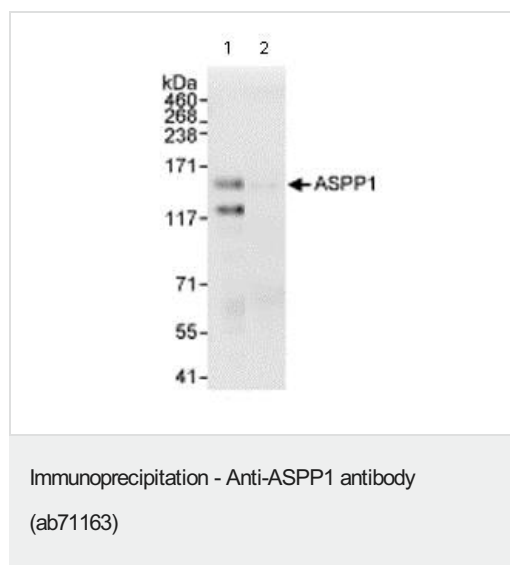
Lane 4 : Whole cell lysate from HeLa cells at 50 µg

Developed using the ECL technique.

Predicted band size: 121 kDa

Observed band size: 145 kDa

Exposure time: 3 minutes



Immunoprecipitation/ Western Blot of ASPP1.

Lane 1: ab71163 at 3µg/mg whole cell lysate.

Lane 2: Control IgG.

All lanes: Whole cell lysate from Hela cells at 1 mg for IP, 20% of IP loaded.

Detection: Chemiluminescence with an exposure time of 10 seconds.

Please note: All products are "FOR RESEARCH USE ONLY. NOT FOR USE IN DIAGNOSTIC PROCEDURES"

Our Abpromise to you: Quality guaranteed and expert technical support

- Replacement or refund for products not performing as stated on the datasheet
- Valid for 12 months from date of delivery
- Response to your inquiry within 24 hours
- We provide support in Chinese, English, French, German, Japanese and Spanish
- Extensive multi-media technical resources to help you
- We investigate all quality concerns to ensure our products perform to the highest standards

If the product does not perform as described on this datasheet, we will offer a refund or replacement. For full details of the Abpromise, please visit <https://www.abcam.com/abpromise> or contact our technical team.

Terms and conditions

- Guarantee only valid for products bought direct from Abcam or one of our authorized distributors