

Anti-ATAD3B antibody ab112563

[2 Images](#)

Overview

Product name	Anti-ATAD3B antibody
Description	Rabbit polyclonal to ATAD3B
Host species	Rabbit
Specificity	ab112563 is predicted to not cross-react with other ATAD protein family members.
Tested applications	Suitable for: ICC, WB
Species reactivity	Reacts with: Human
Immunogen	Synthetic peptide corresponding to Human ATAD3B (C terminal). Synthetic peptide (14 amino acids) near the C terminal of Human ATAD3B (NP_114127). Database link: Q5T9A4
Positive control	Human kidney tissue lysate.
General notes	<p>The Life Science industry has been in the grips of a reproducibility crisis for a number of years. Abcam is leading the way in addressing this with our range of recombinant monoclonal antibodies and knockout edited cell lines for gold-standard validation. Please check that this product meets your needs before purchasing.</p> <p>If you have any questions, special requirements or concerns, please send us an inquiry and/or contact our Support team ahead of purchase. Recommended alternatives for this product can be found below, along with publications, customer reviews and Q&As</p>

Properties

Form	Liquid
Storage instructions	Shipped at 4°C. Store at +4°C.
Storage buffer	pH: 7.2 Preservative: 0.02% Sodium azide Constituent: 99% PBS
Purity	Immunogen affinity purified
Clonality	Polyclonal
Isotype	IgG

Applications

The Abpromise guarantee

Our **Abpromise guarantee** covers the use of ab112563 in the following tested applications.

The application notes include recommended starting dilutions; optimal dilutions/concentrations should be determined by the end user.

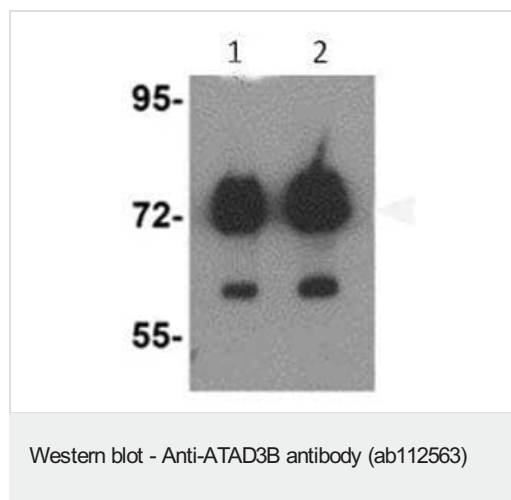
Application	Abreviews	Notes
ICC		Use a concentration of 5 µg/ml.
WB		Use a concentration of 1 - 2 µg/ml. Predicted molecular weight: 73 kDa.

Target

Relevance

ATAD3B belongs to the AAA ATPase family. ATPases are a class of enzymes that catalyze the decomposition of adenosine triphosphate (ATP) into adenosine diphosphate (ADP) and a free phosphate ion. This dephosphorylation reaction releases energy, which the enzyme (in most cases) harnesses to drive other chemical reactions that would not otherwise occur. There are three named isoforms.

Images



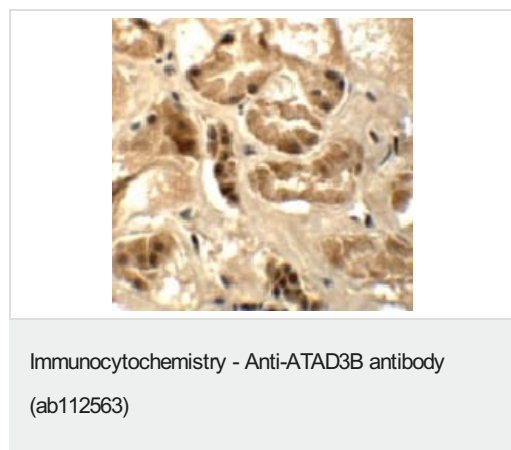
Lane 1 : Anti-ATAD3B antibody (ab112563) at 1 µg/ml

Lane 2 : Anti-ATAD3B antibody (ab112563) at 2 µg/ml

All lanes : Human kidney tissue lysate

Lysates/proteins at 15 µg per lane.

Predicted band size: 73 kDa



Immunohistochemistry of ATAD3B in human kidney tissue with ab112563 at 5 ug/mL.

Please note: All products are "FOR RESEARCH USE ONLY. NOT FOR USE IN DIAGNOSTIC PROCEDURES"

Our Abpromise to you: Quality guaranteed and expert technical support

- Replacement or refund for products not performing as stated on the datasheet
- Valid for 12 months from date of delivery
- Response to your inquiry within 24 hours

- We provide support in Chinese, English, French, German, Japanese and Spanish
- Extensive multi-media technical resources to help you
- We investigate all quality concerns to ensure our products perform to the highest standards

If the product does not perform as described on this datasheet, we will offer a refund or replacement. For full details of the Abpromise, please visit <https://www.abcam.com/abpromise> or contact our technical team.

Terms and conditions

- Guarantee only valid for products bought direct from Abcam or one of our authorized distributors