




Product datasheet

Anti-Ataxin 7 antibody ab11434

★ ★ ★ ★ ★ [2 Abreviews](#) [2 References](#) [3 Images](#)

Overview

| | |
|----------------------------|---|
| Product name | Anti-Ataxin 7 antibody |
| Description | Rabbit polyclonal to Ataxin 7 |
| Host species | Rabbit |
| Tested applications | Suitable for: ICC/IF, WB |
| Species reactivity | Reacts with: Human Predicted to work with: Mouse  |
| Immunogen | Synthetic peptide corresponding to Human Ataxin 7 aa 1-17. Sequence: MSERAADDVRGEP RR AA (Peptide available as ab39761)  Run BLAST with  Run BLAST with |
| Positive control | ICC/IF: SH-SY5Y (Human neuroblastoma cell line from bone marrow) whole cell lysate ; U-87 MG (Human glioblastoma-astrocytoma epithelial cell line) whole cell lysate WB: Transfected COS-1 (African green monkey kidney fibroblast-like cell line) whole cell lysate |
| General notes | <p>The Life Science industry has been in the grips of a reproducibility crisis for a number of years. Abcam is leading the way in addressing this with our range of recombinant monoclonal antibodies and knockout edited cell lines for gold-standard validation. Please check that this product meets your needs before purchasing.</p> <p>If you have any questions, special requirements or concerns, please send us an inquiry and/or contact our Support team ahead of purchase. Recommended alternatives for this product can be found below, along with publications, customer reviews and Q&As</p> |

Properties

| | |
|-----------------------------|---|
| Form | Liquid |
| Storage instructions | Shipped at 4°C. Store at +4°C short term (1-2 weeks). Upon delivery aliquot. Store at -20°C. Avoid freeze / thaw cycle. |
| Storage buffer | Preservative: 0.05% Sodium azide Constituents: 99% PBS, 0.1% BSA |
| Purity | Immunogen affinity purified |

| | |
|------------------|------------|
| Clonality | Polyclonal |
| Isotype | IgG |

Applications

The Abpromise guarantee Our **Abpromise guarantee** covers the use of ab11434 in the following tested applications. The application notes include recommended starting dilutions; optimal dilutions/concentrations should be determined by the end user.

| Application | Abreviews | Notes |
|-------------|---------------|---|
| ICC/IF | | Use a concentration of 1 µg/ml. |
| WB | ★ ★ ☆ ☆ ☆ (2) | Use a concentration of 1 µg/ml. Detects a band of approximately 96 kDa. |

Target

| | |
|---|---|
| Function | Acts as component of the STAGA transcription coactivator-HAT complex. Mediates the interaction of STAGA complex with the CRX and is involved in CRX-dependent gene activation. Necessary for microtubule cytoskeleton stabilization. |
| Tissue specificity | Isoform a and isoform b are expressed in CNS, but isoform a is expressed predominantly in the peripheral tissues. Isoform b is also highly expressed in the frontal lobe, skeletal muscle and spinal cord and is expressed at a lower level in the lung, lymphoblast and intestine. |
| Involvement in disease | Spinocerebellar ataxia 7 |
| Sequence similarities | Belongs to the ataxin-7 family. Contains 1 SCA7 domain. |
| Post-translational modifications | Proteolytically cleaved. The cleavage may be involved in SCA7 degeneration: the isoform fragments may exert distinct toxic influences that could contribute to selective neurodegeneration. Sumoylation decreases the aggregation propensity and cellular toxicity of forms with an expanded poly-Gln region but has no effect on subcellular location or interaction with components of the STAGA complex. |
| Cellular localization | Cytoplasm and Nucleus. Nucleus, nucleolus. Nucleus matrix. Cytoplasm, cytoskeleton. In addition to a diffuse distribution throughout the nucleus, it is associated with the nuclear matrix and the nucleolus. It is able to shuttle between the nucleus and cytoplasm. |

Images

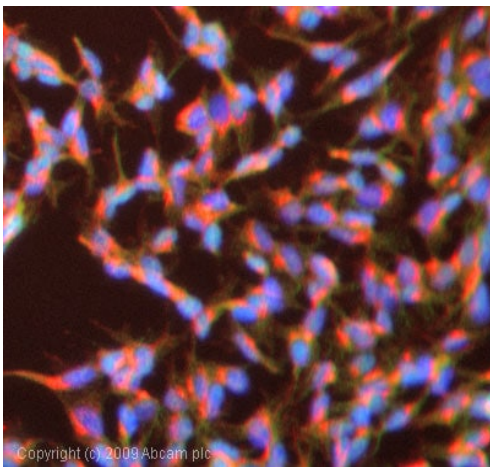
Fig.1

Ataxin 7



Western blot - Anti-Ataxin 7 antibody (ab11434)

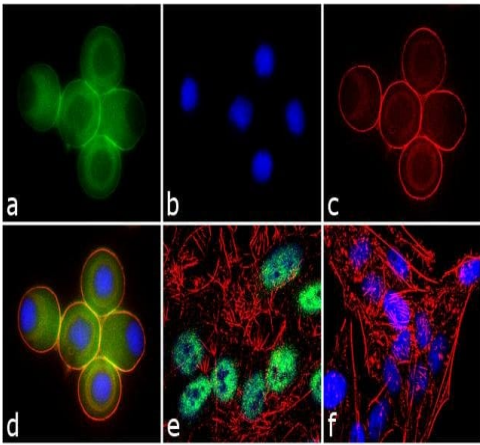
Western blot of Ataxin 7 in transfected COS-1 cell lysate using ab11434.



Copyright (c) 2008 Abcam plc

Immunocytochemistry/ Immunofluorescence - Anti-Ataxin 7 antibody (ab11434)

ICC/IF image of ab11434 stained SHSY5Y cells. The cells were 100% methanol fixed (5 min) and then incubated in 1%BSA / 10% normal goat serum / 0.3M glycine in 0.1% PBS-Tween for 1h to permeabilise the cells and block non-specific protein-protein interactions. The cells were then incubated with the antibody (ab11434, 1 μ g/ml) overnight at +4 $^{\circ}$ C. The secondary antibody (green) was Alexa Fluor $^{\circ}$ 488 goat anti-rabbit IgG (H+L) used at a 1/1000 dilution for 1h. Alexa Fluor $^{\circ}$ 594 WGA was used to label plasma membranes (red) at a 1/200 dilution for 1h. DAPI was used to stain the cell nuclei (blue) at a concentration of 1.43 μ M.



Immunocytochemistry/ Immunofluorescence - Anti-Ataxin 7 antibody (ab11434)

Immunofluorescent analysis of 4% paraformaldehyde-fixed, 0.1% Triton™ X-100 permeabilized, 70% confluent log phase U-87 MG (Human glioblastoma-astrocytoma epithelial cell line) cells, treated with 100 ng of Nocodazole for 16 hours. Labelling Ataxin 7 with ab11434 at 2 µg/mL and incubated for 3 hours at room temperature and then labelled with Goat anti-Rabbit IgG secondary antibody, Alexa Fluor® 488 conjugate at a dilution of 1/2000 for 45 minutes at room temperature (Green). Nuclei were stained with SlowFade® Gold Antifade Mountant with DAPI (Blue). F-actin was stained with Alexa Fluor® 555 Rhodamine Phalloidin at a dilution of 1/300 (Red). Panel e is untreated cell with nuclear localization. Panel f represents control cells with no primary antibody to assess background. The images were captured at 60X magnification.

Please note: All products are "FOR RESEARCH USE ONLY. NOT FOR USE IN DIAGNOSTIC PROCEDURES"

Our Abpromise to you: Quality guaranteed and expert technical support

- Replacement or refund for products not performing as stated on the datasheet
- Valid for 12 months from date of delivery
- Response to your inquiry within 24 hours
- We provide support in Chinese, English, French, German, Japanese and Spanish
- Extensive multi-media technical resources to help you
- We investigate all quality concerns to ensure our products perform to the highest standards

If the product does not perform as described on this datasheet, we will offer a refund or replacement. For full details of the Abpromise, please visit <https://www.abcam.com/abpromise> or contact our technical team.

Terms and conditions

- Guarantee only valid for products bought direct from Abcam or one of our authorized distributors