

Product datasheet

Anti-ATF2 antibody [E242] ab32061

Recombinant RabMAb

[1 References](#) [3 Images](#)

Overview

Product name	Anti-ATF2 antibody [E242]
Description	Rabbit monoclonal [E242] to ATF2
Host species	Rabbit
Specificity	ab32061 recognises ATF-2 (activating transcription factor-2, CRE-BP1). It does not cross-react with other ATF family members
Tested applications	Suitable for: WB, IHC-P, IP Unsuitable for: Flow Cyt or ICC/IF
Species reactivity	Reacts with: Human
Immunogen	Synthetic peptide within Human ATF2 aa 50-150 (N terminal). The exact sequence is proprietary.
Positive control	WB: HeLa whole cell lysate; IHC-P: Human lung cancer.
General notes	<p>This product is a recombinant monoclonal antibody, which offers several advantages including:</p> <ul style="list-style-type: none">- High batch-to-batch consistency and reproducibility- Improved sensitivity and specificity- Long-term security of supply- Animal-free production <p>For more information see here.</p> <p>Our RabMAb[®] technology is a patented hybridoma-based technology for making rabbit monoclonal antibodies. For details on our patents, please refer to RabMAb[®] patents.</p> <p>Mouse, Rat: We have preliminary internal testing data to indicate this antibody may not react with these species. Please contact us for more information.</p>

Properties

Form	Liquid
Storage instructions	Shipped at 4°C. Upon delivery aliquot and store at -20°C. Avoid freeze / thaw cycles.
Storage buffer	pH: 7.20 Preservative: 0.01% Sodium azide Constituents: 49% PBS, 50% Glycerol (glycerin, glycerine), 0.05% BSA
Purity	Protein A purified

Clonality	Monoclonal
Clone number	E242
Isotype	IgG

Applications

The Abpromise guarantee Our **Abpromise guarantee** covers the use of ab32061 in the following tested applications. The application notes include recommended starting dilutions; optimal dilutions/concentrations should be determined by the end user.

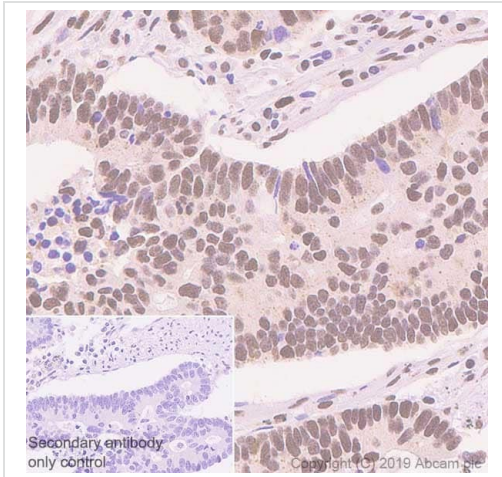
Application	Abreviews	Notes
WB		1/10000. Detects a band of approximately 70 kDa (predicted molecular weight: 54 kDa).
IHC-P		1/100. Perform heat mediated antigen retrieval with citrate buffer pH 6 before commencing with IHC staining protocol.
IP		1/30.

Application notes Is unsuitable for Flow Cyt or ICC/IF.

Target

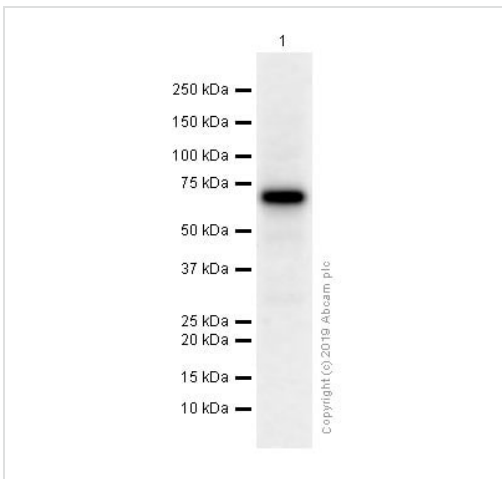
Function	Transcriptional activator, probably constitutive, which binds to the cAMP-responsive element (CRE) (consensus: 5'-GTGACGT[AC][AG]-3'), a sequence present in many viral and cellular promoters. Interaction with JUN redirects JUN to bind to CRES preferentially over the 12-O-tetradecanoylphorbol-13-acetate response elements (TRES) as part of an ATF2/JUN complex.
Tissue specificity	Abundant expression seen in the brain.
Sequence similarities	Belongs to the bZIP family. ATF subfamily. Contains 1 bZIP domain. Contains 1 C2H2-type zinc finger.
Post-translational modifications	Phosphorylation of Thr-69 and Thr-71 by MAPK14 causes increased transcriptional activity. Also phosphorylated and activated by JNK.
Cellular localization	Nucleus.

Images



Immunohistochemistry (Formalin/PFA-fixed paraffin-embedded sections) - Anti-ATF2 antibody [E242] (ab32061)

Immunohistochemistry (Formalin/PFA-fixed paraffin-embedded sections) analysis of human lung cancer tissue labeling ATF2 with ab32061 at 1/100 dilution (2.55 µg/mL). Heat mediated antigen retrieval was performed using Tris/EDTA buffer pH 9 (epitope retrieval solution 2). Positive staining on lung cancer. The section was incubated with ab32061 for 30 mins at room temperature. The immunostaining staining was performed on a Leica Biosystems BOND® RX instrument and visualised using **ab209101**, Rabbit specific IHC polymer detection kit HRP/DAB. Negative control using PBS instead of primary antibody. Counterstained with hematoxylin.



Western blot - Anti-ATF2 antibody [E242] (ab32061)

Anti-ATF2 antibody [E242] (ab32061) at 1/10000 dilution + HeLa (Human cervix adenocarcinoma epithelial cell) whole cell lysate

Secondary

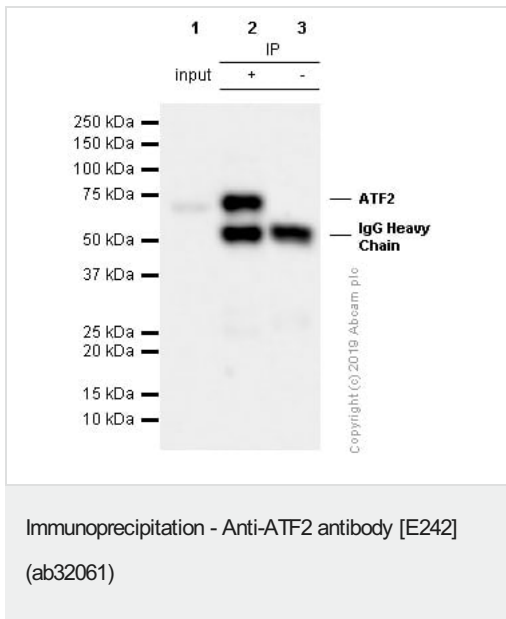
Goat Anti-Rabbit IgG H&L (HRP) (**ab97051**) at 1/20000 dilution

Predicted band size: 54 kDa

Observed band size: 70 kDa

Exposure time: 90 seconds

Blocking buffer and concentration: 5% NFDm/TBST



ab32061 (purified) at 1/30 dilution immunoprecipitating ATF2 in HeLa (human cervix adenocarcinoma epithelial cell) whole cell lysate.

Lane 1 (input): HeLa whole cell lysate 10µg

Lane 2 (+): ab32061 + HeLa whole cell lysate

Lane 3 (-): Rabbit monoclonal IgG (**ab172730**) instead of ab32061 in HeLa whole cell lysate

For western blotting, ab32061 at 1/500 and VeriBlot for IP Detection Reagent (HRP) (**ab131366**) was used for detection at 1/1000 dilution.

Blocking and diluting buffer: 5% NFDm/TBST.

Please note: All products are "FOR RESEARCH USE ONLY. NOT FOR USE IN DIAGNOSTIC PROCEDURES"

Our Abpromise to you: Quality guaranteed and expert technical support

- Replacement or refund for products not performing as stated on the datasheet
- Valid for 12 months from date of delivery
- Response to your inquiry within 24 hours
- We provide support in Chinese, English, French, German, Japanese and Spanish
- Extensive multi-media technical resources to help you
- We investigate all quality concerns to ensure our products perform to the highest standards

If the product does not perform as described on this datasheet, we will offer a refund or replacement. For full details of the Abpromise, please visit <https://www.abcam.com/abpromise> or contact our technical team.

Terms and conditions

- Guarantee only valid for products bought direct from Abcam or one of our authorized distributors