




Product datasheet

Anti-ATF3 [CL1685] antibody ab191513

[2 Abreviews](#) [4 References](#) [6 Images](#)

Overview

| | |
|----------------------------|---|
| Product name | Anti-ATF3 [CL1685] antibody |
| Description | Mouse monoclonal [CL1685] to ATF3 |
| Host species | Mouse |
| Tested applications | Suitable for: IHC-P, ICC/IF |
| Species reactivity | Reacts with: Human Predicted to work with: Mouse, Rat, Cow  |
| Immunogen | Recombinant fragment corresponding to Human ATF3 aa 1-150. Database link: P18847-1  Run BLAST with  Run BLAST with |
| Epitope | ab191513 recognizes an epitope corresponding to amino acids 16-30 (ASAMVCLSPPGSLV) of Human ATF3 as determined by overlapping synthetic peptides. |
| Positive control | ICC/IF: RH-30 cells. IHC-P: Human placenta, fallopian tube, duodenum and stomach cancer tissues. |
| General notes | <p>The Life Science industry has been in the grips of a reproducibility crisis for a number of years. Abcam is leading the way in addressing this with our range of recombinant monoclonal antibodies and knockout edited cell lines for gold-standard validation. Please check that this product meets your needs before purchasing.</p> <p>If you have any questions, special requirements or concerns, please send us an inquiry and/or contact our Support team ahead of purchase. Recommended alternatives for this product can be found below, along with publications, customer reviews and Q&As</p> |

Properties

| | |
|-----------------------------|---|
| Form | Liquid |
| Storage instructions | Shipped at 4°C. Store at +4°C short term (1-2 weeks). Upon delivery aliquot. Store at -20°C long term. Avoid freeze / thaw cycle. |
| Storage buffer | pH: 7.20 Preservative: 0.02% Sodium azide Constituents: 59% PBS, 40% Glycerol (glycerin, glycerine) |
| Purity | Immunogen affinity purified |
| Clonality | Monoclonal |

Clone number CL1685

Isotype IgG1

Applications

The Abpromise guarantee Our **Abpromise guarantee** covers the use of ab191513 in the following tested applications. The application notes include recommended starting dilutions; optimal dilutions/concentrations should be determined by the end user.

| Application | Abreviews | Notes |
|-------------|-----------|--|
| IHC-P | | 1/50 - 1/200. Perform heat mediated antigen retrieval with citrate buffer pH 6 before commencing with IHC staining protocol. |
| ICC/IF | | Use a concentration of 2 - 10 µg/ml. Fixation: PFA/Triton X-100 |

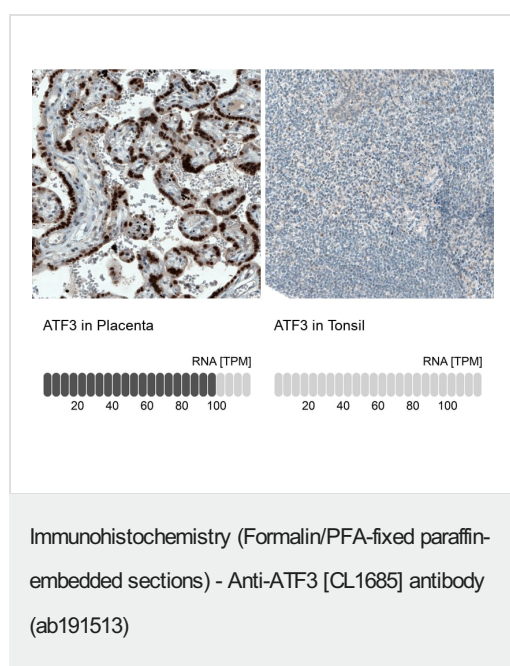
Target

Function This protein binds the cAMP response element (CRE) (consensus: 5'-GTGACGT[AC][AG]-3'), a sequence present in many viral and cellular promoters. Represses transcription from promoters with ATF sites. It may repress transcription by stabilizing the binding of inhibitory cofactors at the promoter. Isoform 2 activates transcription presumably by sequestering inhibitory cofactors away from the promoters.

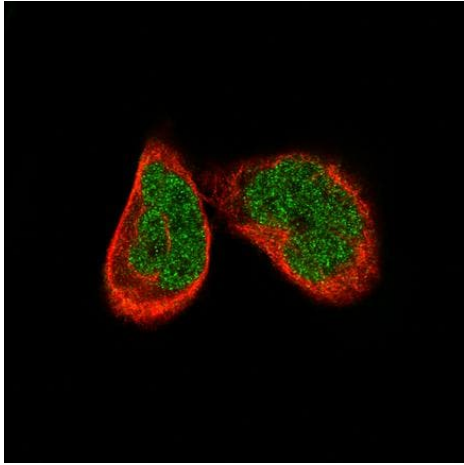
Sequence similarities Belongs to the bZIP family. ATF subfamily. Contains 1 bZIP domain.

Cellular localization Nucleus.

Images



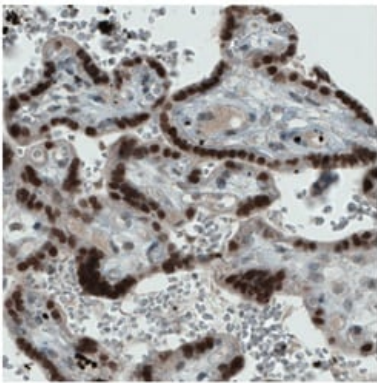
Immunohistochemical analysis of paraffin-embedded Human placenta (Left) and tonsil tissues (Right) labeling ATF3 with ab191513. Antigen retrieval using HIER pH6. The data is produced following IHC standard protocol. Positive staining was observed on Human placenta.



Immunocytochemistry/ Immunofluorescence - Anti-ATF3 [CL1685] antibody (ab191513)

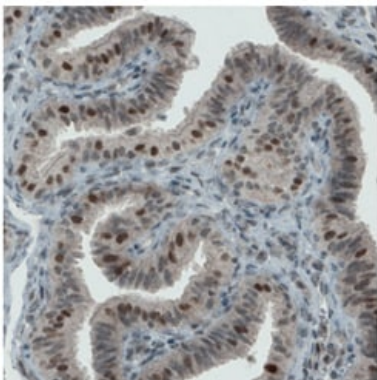
PFA-fixed, Triton X-100 permeabilized RH-30 cells stained for ATF3 (Green) using ab191513 at 4 µg/ml in ICC/IF.

Microtubules are stained red.



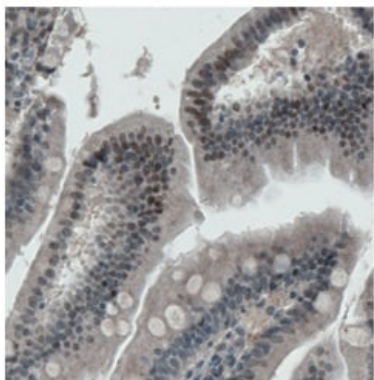
Immunohistochemistry (Formalin/PFA-fixed paraffin-embedded sections) - Anti-ATF3 [CL1685] antibody (ab191513)

Immunohistochemical analysis of paraffin-embedded Human placenta tissue labeling AFT3 with ab191513 antibody at a dilution of 1/200.



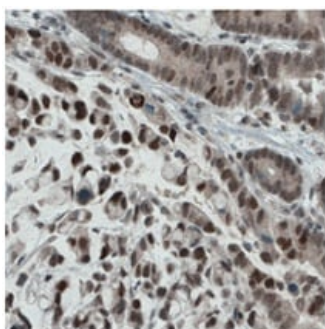
Immunohistochemistry (Formalin/PFA-fixed paraffin-embedded sections) - Anti-ATF3 [CL1685] antibody (ab191513)

Immunohistochemical analysis of paraffin-embedded Human fallopian tissue labeling AFT3 with ab191513 antibody at a dilution of 1/200.



Immunohistochemical analysis of paraffin-embedded Human duodenum tissue labeling ATF3 with ab191513 antibody at a dilution of 1/200.

Immunohistochemistry (Formalin/PFA-fixed paraffin-embedded sections) - Anti-ATF3 [CL1685] antibody (ab191513)



Immunohistochemical analysis of paraffin-embedded Human stomach cancer tissue labeling ATF3 with ab191513 antibody at a dilution of 1/200.

Immunohistochemistry (Formalin/PFA-fixed paraffin-embedded sections) - Anti-ATF3 [CL1685] antibody (ab191513)

Please note: All products are "FOR RESEARCH USE ONLY. NOT FOR USE IN DIAGNOSTIC PROCEDURES"

Our Abpromise to you: Quality guaranteed and expert technical support

- Replacement or refund for products not performing as stated on the datasheet
- Valid for 12 months from date of delivery
- Response to your inquiry within 24 hours
- We provide support in Chinese, English, French, German, Japanese and Spanish
- Extensive multi-media technical resources to help you
- We investigate all quality concerns to ensure our products perform to the highest standards

If the product does not perform as described on this datasheet, we will offer a refund or replacement. For full details of the Abpromise, please visit <https://www.abcam.com/abpromise> or contact our technical team.

Terms and conditions

- Guarantee only valid for products bought direct from Abcam or one of our authorized distributors