


Product datasheet

Anti-ATF6 antibody ab134561

★★★★★ [1 Abreviews](#) [3 Images](#)

Overview

Product name	Anti-ATF6 antibody
Description	Rabbit polyclonal to ATF6
Host species	Rabbit
Tested applications	Suitable for: WB, IP, IHC-P
Species reactivity	Reacts with: Human Predicted to work with: Rabbit, Chimpanzee, Gorilla, Elephant 
Immunogen	Synthetic peptide corresponding to Human ATF6 aa 600-700. Database link: P18850
Positive control	WB: HeLa, 293T and Jurkat whole cell lysate. IP: HeLa cells. IHC-P: Human ovarian carcinoma.
General notes	<p>The Life Science industry has been in the grips of a reproducibility crisis for a number of years. Abcam is leading the way in addressing this with our range of recombinant monoclonal antibodies and knockout edited cell lines for gold-standard validation. Please check that this product meets your needs before purchasing.</p> <p>If you have any questions, special requirements or concerns, please send us an inquiry and/or contact our Support team ahead of purchase. Recommended alternatives for this product can be found below, along with publications, customer reviews and Q&As</p>

Properties

Form	Liquid
Storage instructions	Shipped at 4°C. Store at +4°C.
Storage buffer	pH: 7 Preservative: 0.09% Sodium azide Constituent: 99% Tris citrate/phosphate
	pH 7 to 8.
Purity	Immunogen affinity purified
Clonality	Polyclonal
Isotype	IgG

Applications

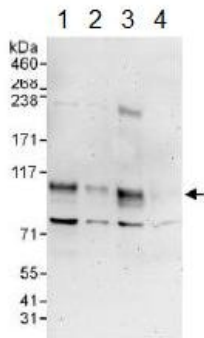
The Abpromise guarantee Our **Abpromise guarantee** covers the use of ab134561 in the following tested applications. The application notes include recommended starting dilutions; optimal dilutions/concentrations should be determined by the end user.

Application	Abreviews	Notes
WB	★★★★★ (1)	1/2000 - 1/10000. Predicted molecular weight: 74 kDa.
IP		Use at 2-10 µg/mg of lysate.
IHC-P		1/500 - 1/2000.

Target

Function	Transcription factor that acts during endoplasmic reticulum stress by activating unfolded protein response target genes. Binds DNA on the 5'-CCAC[GA]-3' half of the ER stress response element (ERSE) (5'-CCAAT-N(9)-CCAC[GA]-3') and of ERSE II (5'-ATTGG-N-CCACG-3'). Binding to ERSE requires binding of NF-Y to ERSE. Could also be involved in activation of transcription by the serum response factor.
Tissue specificity	Ubiquitous.
Sequence similarities	Belongs to the bZIP family. ATF subfamily. Contains 1 bZIP domain.
Domain	The basic domain functions as a nuclear localization signal. The basic leucine-zipper domain is sufficient for association with the NF-Y trimer and binding to ERSE.
Post-translational modifications	During unfolded protein response an approximative 50 kDa fragment containing the cytoplasmic transcription factor domain is released by proteolysis. The cleavage seems to be performed sequentially by site-1 and site-2 proteases. N-glycosylated. The glycosylation status may serve as a sensor for ER homeostasis, resulting in ATF6 activation to trigger the unfolded protein response (UPR). Phosphorylated in vitro by MAPK14/P38MAPK.
Cellular localization	Endoplasmic reticulum membrane and Nucleus. Under ER stress the cleaved N-terminal cytoplasmic domain translocates into the nucleus.

Images



Western blot - Anti-ATF6 antibody (ab134561)

All lanes : Anti-ATF6 antibody (ab134561) at 0.1 µg/ml

Lane 1 : HeLa whole cell lysate at 50 µg

Lane 2 : HeLa whole cell lysate at 15 µg

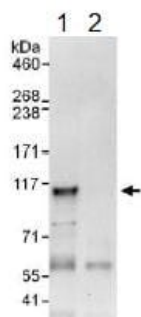
Lane 3 : 293T whole cell lysate at 50 µg

Lane 4 : Jurkat whole cell lysate at 50 µg

Developed using the ECL technique.

Predicted band size: 74 kDa

Exposure time: 3 minutes



Immunoprecipitation - Anti-ATF6 antibody
(ab134561)

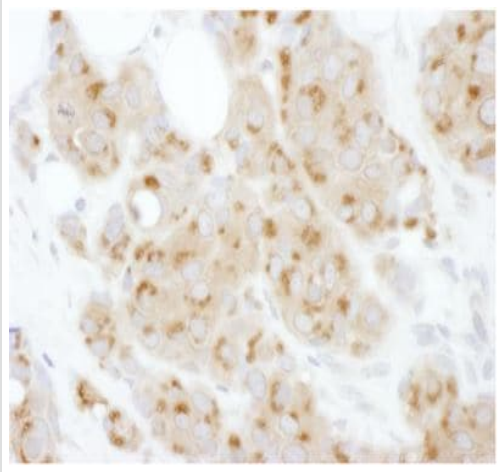
Detection of ATF6 by Western Blot of Immunoprecipitate.

Immunoprecipitation of ATF6 in HeLa whole cell lysate, using ab134561 at 6 µg/mg lysate (1 mg/IP; 20% of IP loaded/lane).

For the subsequent Western blot, ab134561 was used at 1 µg/ml.

The lysate in lane 2 is precipitated with an IgG control antibody.

Detection: Chemiluminescence with an exposure time of 30 seconds.



Paraffin embedded human ovarian carcinoma tissue stained for ATF6 using ab134561 1/1000 dilution in immunohistochemical analysis. Counterstain: hematoxylin (blue).

Immunohistochemistry (Formalin/PFA-fixed paraffin-embedded sections) - Anti-ATF6 antibody (ab134561)

Please note: All products are "FOR RESEARCH USE ONLY. NOT FOR USE IN DIAGNOSTIC PROCEDURES"

Our Abpromise to you: Quality guaranteed and expert technical support

- Replacement or refund for products not performing as stated on the datasheet
- Valid for 12 months from date of delivery
- Response to your inquiry within 24 hours
- We provide support in Chinese, English, French, German, Japanese and Spanish
- Extensive multi-media technical resources to help you
- We investigate all quality concerns to ensure our products perform to the highest standards

If the product does not perform as described on this datasheet, we will offer a refund or replacement. For full details of the Abpromise, please visit <https://www.abcam.com/abpromise> or contact our technical team.

Terms and conditions

- Guarantee only valid for products bought direct from Abcam or one of our authorized distributors