



Product datasheet

Anti-ATF6 antibody ab203119

★★★★★ [6 Abreviews](#) [56 References](#) [4 Images](#)

Overview

Product name	Anti-ATF6 antibody
Description	Rabbit polyclonal to ATF6
Host species	Rabbit
Tested applications	Suitable for: IHC-P, WB, Flow Cyt (Intra), ICC/IF
Species reactivity	Reacts with: Human
Immunogen	Synthetic peptide within Human ATF6 aa 300-400 conjugated to keyhole limpet haemocyanin. The exact immunogen sequence used to generate this antibody is proprietary information. If additional detail on the immunogen is needed to determine the suitability of the antibody for your needs, please contact our Scientific Support team to discuss your requirements. Database link: P18850
	 Run BLAST with  Run BLAST with
Positive control	WB: huvec, raji, jurkat, a549, thp-1, 293t and du145 cells ICC/IF: U-251 cells IHC: HeLa cells Flow-Cyt: Jurkat cells
General notes	<p>The Life Science industry has been in the grips of a reproducibility crisis for a number of years. Abcam is leading the way in addressing this with our range of recombinant monoclonal antibodies and knockout edited cell lines for gold-standard validation. Please check that this product meets your needs before purchasing.</p> <p>If you have any questions, special requirements or concerns, please send us an inquiry and/or contact our Support team ahead of purchase. Recommended alternatives for this product can be found below, along with publications, customer reviews and Q&As</p>

Properties

Form	Liquid
Storage instructions	Shipped at 4°C. Store at +4°C short term (1-2 weeks). Upon delivery aliquot. Store at -20°C long term. Avoid freeze / thaw cycle.
Storage buffer	pH: 7.40 Preservative: 0.02% Proclin 300 Constituents: 50% Glycerol (glycerin, glycerine), 1% BSA, 48.98% TBS, 1X
Purity	Protein A purified
Clonality	Polyclonal

Isotype

IgG

Applications

The Abpromise guarantee

Our **Abpromise guarantee** covers the use of ab203119 in the following tested applications.

The application notes include recommended starting dilutions; optimal dilutions/concentrations should be determined by the end user.

Application	Abreviews	Notes
IHC-P		1/100 - 1/500. Perform heat mediated antigen retrieval with citrate buffer pH 6 before commencing with IHC staining protocol. Use at 1/50 - 1/200 with fluorescent detection methods.
WB	★★★★★ (1)	1/100 - 1/1000. Predicted molecular weight: 75 kDa.
Flow Cyt (Intra)		1/100.
ICC/IF	★★★★★ (3)	1/200.

Target

Function

Transcription factor that acts during endoplasmic reticulum stress by activating unfolded protein response target genes. Binds DNA on the 5'-CCAC[GA]-3' half of the ER stress response element (ERSE) (5'-CCAAT-N(9)-CCAC[GA]-3') and of ERSE II (5'-ATTGG-N-CCACG-3'). Binding to ERSE requires binding of NF-Y to ERSE. Could also be involved in activation of transcription by the serum response factor.

Tissue specificity

Ubiquitous.

Sequence similarities

Belongs to the bZIP family. ATF subfamily.
Contains 1 bZIP domain.

Domain

The basic domain functions as a nuclear localization signal.
The basic leucine-zipper domain is sufficient for association with the NF-Y trimer and binding to ERSE.

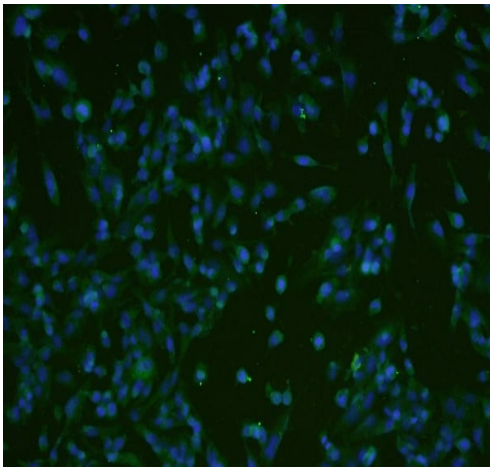
Post-translational modifications

During unfolded protein response an approximative 50 kDa fragment containing the cytoplasmic transcription factor domain is released by proteolysis. The cleavage seems to be performed sequentially by site-1 and site-2 proteases.
N-glycosylated. The glycosylation status may serve as a sensor for ER homeostasis, resulting in ATF6 activation to trigger the unfolded protein response (UPR).
Phosphorylated in vitro by MAPK14/P38MAPK.

Cellular localization

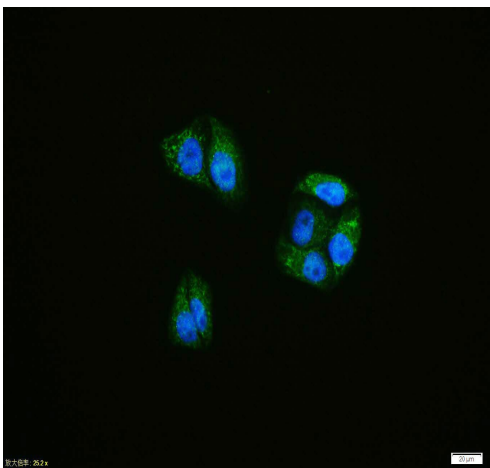
Endoplasmic reticulum membrane and Nucleus. Under ER stress the cleaved N-terminal cytoplasmic domain translocates into the nucleus.

Images



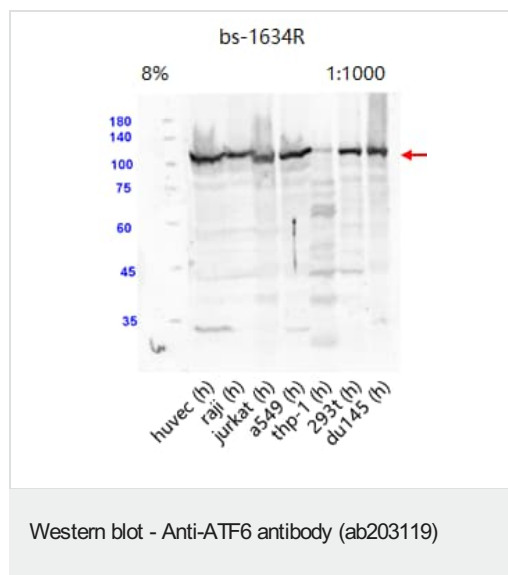
Immunocytochemistry/ Immunofluorescence - Anti-ATF6 antibody (ab203119)

Immunocytochemistry/ Immunofluorescence analysis of U-251 cells labeling ATF6 with ab203119 at 1/200 (diluted in PBS and incubated for 2 hours at 37°C). Goat Anti-Rabbit IgG (H+L) FITC conjugated antibody was used as the secondary antibody. Nuclei were stained with DAPI (blue).



Immunohistochemistry (Formalin/PFA-fixed paraffin-embedded sections) - Anti-ATF6 antibody (ab203119)

Immunohistochemical analysis of HeLa cells stained for ATF6 using ab203119 at a dilution of 1:100.



All lanes : Anti-ATF6 antibody (ab203119) at 1/1000 dilution

Lane 1 : HUVEC cell lysate

Lane 2 : Raji cell lysate

Lane 3 : Jurkat cell lysate

Lane 4 : A549 cell lysate

Lane 5 : thp-1 cell lysate

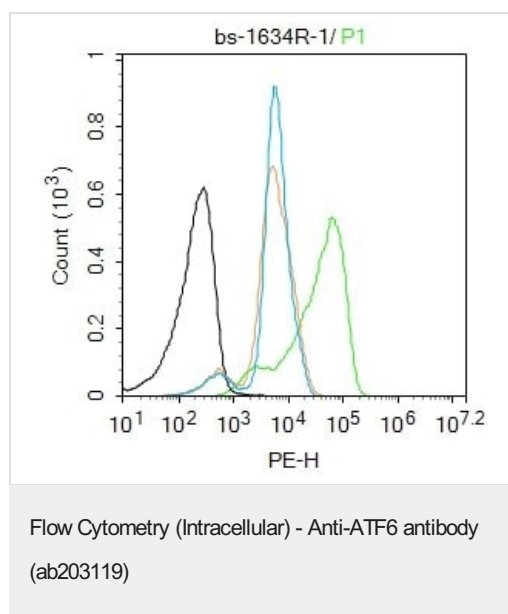
Lane 6 : 293T cell lysate

Lane 7 : du145 cell lysate

Secondary

All lanes : Conjugated secondary at 1/2000 dilution

Predicted band size: 75 kDa



Jurkat cells were fixed with 4% PFA for 10min at room temperature, permeabilized with 90% ice-cold methanol for 20 min at -20°C, and incubated in 5% BSA blocking buffer for 30 min at room temperature. Cells were then stained with ATF6 Antibody (ab203119) at 1:100 dilution in blocking buffer and incubated for 30 min at room temperature, washed twice with 2% BSA in PBS, followed by secondary antibody incubation for 40 min at room temperature. Acquisitions of 20,000 events were performed. Cells stained with primary antibody (green), and isotype control (orange).

Please note: All products are "FOR RESEARCH USE ONLY. NOT FOR USE IN DIAGNOSTIC PROCEDURES"

Our Abpromise to you: Quality guaranteed and expert technical support

- Replacement or refund for products not performing as stated on the datasheet
- Valid for 12 months from date of delivery
- Response to your inquiry within 24 hours
- We provide support in Chinese, English, French, German, Japanese and Spanish
- Extensive multi-media technical resources to help you
- We investigate all quality concerns to ensure our products perform to the highest standards

If the product does not perform as described on this datasheet, we will offer a refund or replacement. For full details of the Abpromise, please visit <https://www.abcam.com/abpromise> or contact our technical team.

Terms and conditions

- Guarantee only valid for products bought direct from Abcam or one of our authorized distributors