


Product datasheet

Anti-ATG101 antibody ab229235

[1 References](#) [2 Images](#)

Overview

Product name	Anti-ATG101 antibody
Description	Rabbit polyclonal to ATG101
Host species	Rabbit
Tested applications	Suitable for: IHC-P, WB
Species reactivity	Reacts with: Human Predicted to work with: Mouse, Rat, Cow, Xenopus laevis, Zebrafish, Rhesus monkey 
Immunogen	Synthetic peptide within Human ATG101 (internal sequence). The exact sequence is proprietary. (Carrier-protein conjugated). Database link: Q9BSB4
Positive control	WB: NCHH1299 whole cell extract. IHC-P: A549 xenograft tissue.
General notes	<p>The Life Science industry has been in the grips of a reproducibility crisis for a number of years. Abcam is leading the way in addressing this with our range of recombinant monoclonal antibodies and knockout edited cell lines for gold-standard validation. Please check that this product meets your needs before purchasing.</p> <p>If you have any questions, special requirements or concerns, please send us an inquiry and/or contact our Support team ahead of purchase. Recommended alternatives for this product can be found below, along with publications, customer reviews and Q&As</p>

Properties

Form	Liquid
Storage instructions	Shipped at 4°C. Store at +4°C short term (1-2 weeks). Upon delivery aliquot. Store at -20°C long term. Avoid freeze / thaw cycle.
Storage buffer	pH: 7.00 Preservative: 0.025% Proclin 300 Constituents: 79% PBS, 20% Glycerol (glycerin, glycerine)
Purity	Immunogen affinity purified
Clonality	Polyclonal
Isotype	IgG

Applications

The Abpromise guarantee Our **Abpromise guarantee** covers the use of ab229235 in the following tested applications. The application notes include recommended starting dilutions; optimal dilutions/concentrations should be determined by the end user.

Application	Abreviews	Notes
IHC-P		1/100 - 1/1000.
WB		1/500 - 1/3000. Predicted molecular weight: 25 kDa.

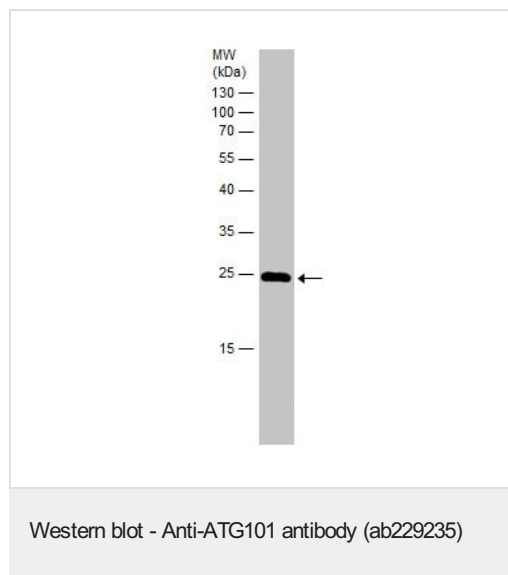
Target

Function Autophagy factor required for autophagosome formation.

Sequence similarities Belongs to the ATG101 family.

Cellular localization Cytoplasm. Preautophagosomal structure. Under starvation conditions, it is localized to punctate structures primarily representing the isolation membrane and the isolation membrane sequesters a portion of the cytoplasm resulting in autophagosome formation.

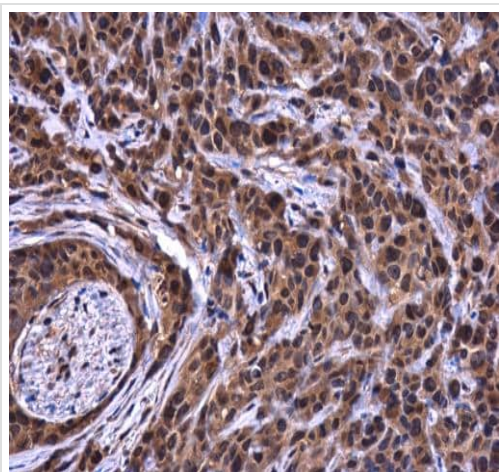
Images



Anti-ATG101 antibody (ab229235) at 1/1000 dilution + NCH1299
(human lung carcinoma cell line) whole cell extract at 30 µg

Predicted band size: 25 kDa

12% SDS-PAGE gel.



Paraffin-embedded A549 (human lung carcinoma cell line) xenograft tissue stained for ATG101 using ab229235 at 1/500 dilution in immunohistochemical analysis.

Immunohistochemistry (Formalin/PFA-fixed paraffin-embedded sections) - Anti-ATG101 antibody (ab229235)

Please note: All products are "FOR RESEARCH USE ONLY. NOT FOR USE IN DIAGNOSTIC PROCEDURES"

Our Abpromise to you: Quality guaranteed and expert technical support

- Replacement or refund for products not performing as stated on the datasheet
- Valid for 12 months from date of delivery
- Response to your inquiry within 24 hours
- We provide support in Chinese, English, French, German, Japanese and Spanish
- Extensive multi-media technical resources to help you
- We investigate all quality concerns to ensure our products perform to the highest standards

If the product does not perform as described on this datasheet, we will offer a refund or replacement. For full details of the Abpromise, please visit <https://www.abcam.com/abpromise> or contact our technical team.

Terms and conditions

- Guarantee only valid for products bought direct from Abcam or one of our authorized distributors