

Product datasheet

Anti-ATG12 antibody - N-terminal ab228494

[1 Image](#)

Overview

Product name	Anti-ATG12 antibody - N-terminal
Description	Rabbit polyclonal to ATG12 - N-terminal
Host species	Rabbit
Tested applications	Suitable for: Flow Cyt (Intra)
Species reactivity	Reacts with: Human
Immunogen	Synthetic peptide corresponding to Human ATG12 (N terminal). An adjuvant has been used to orchestrate/boost the immune response. Database link: O94817
Positive control	Flow Cyt (Intra): SH-SY5Y cells.
General notes	<p>The Life Science industry has been in the grips of a reproducibility crisis for a number of years. Abcam is leading the way in addressing this with our range of recombinant monoclonal antibodies and knockout edited cell lines for gold-standard validation. Please check that this product meets your needs before purchasing.</p> <p>If you have any questions, special requirements or concerns, please send us an inquiry and/or contact our Support team ahead of purchase. Recommended alternatives for this product can be found below, along with publications, customer reviews and Q&As</p>

Properties

Form	Lyophilized:Reconstitute in 500 µl of sterile water. Centrifuge to remove any insoluble material. After reconstitution keep aliquots at -20°C for a higher stability, and at 4°C with an appropriate antibacterial agent. Glycerol (1:1) may be added for an additional stability.
Storage instructions	Shipped at 4°C. Store at +4°C short term (1-2 weeks). Upon delivery aliquot. Store at -20°C long term. Avoid freeze / thaw cycle.
Storage buffer	pH: 7
Purity	Protein G purified
Clonality	Polyclonal
Isotype	IgG

Applications

The Abpromise guarantee

Our **Abpromise guarantee** covers the use of ab228494 in the following tested applications.

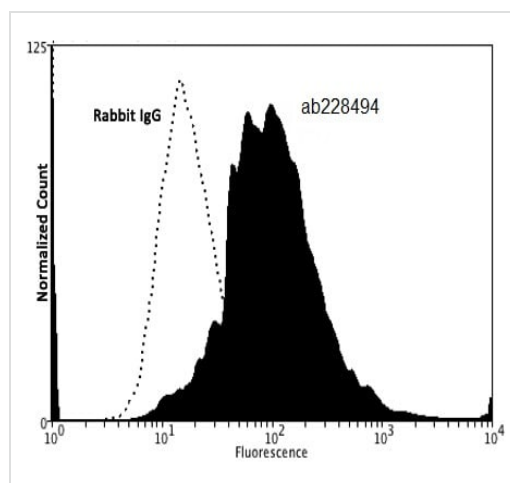
The application notes include recommended starting dilutions; optimal dilutions/concentrations should be determined by the end user.

Application	Abreviews	Notes
Flow Cyt (Intra)		Use 2µg for 10 ⁶ cells.

Target

Function	Ubiquitin-like protein required for autophagy. Conjugated to ATG3 and ATG5.
Tissue specificity	Ubiquitous.
Sequence similarities	Belongs to the ATG12 family.
Domain	Shares weak sequence similarity with ubiquitin family, but contains an 'ubiquitin superfold' and the C-terminal Gly is required for isopeptide linkage.
Cellular localization	Cytoplasm.

Images



Flow Cytometry (Intracellular) - Anti-ATG12 antibody
- N-terminal (ab228494)

Flow cytometric analysis of methanol-fixed, 0.1% Tween-20-permeabilized SH-SY5Y (human neuroblastoma cell line from bone marrow) cell line labeling ATG12 with ab228494 at 2 µg per 10⁶ cells (black) compared with a Rabbit IgG Control (white). Donkey anti-Rabbit PE at 1/100 dilution was used as the secondary antibody.

Please note: All products are "FOR RESEARCH USE ONLY. NOT FOR USE IN DIAGNOSTIC PROCEDURES"

Our Abpromise to you: Quality guaranteed and expert technical support

- Replacement or refund for products not performing as stated on the datasheet
- Valid for 12 months from date of delivery
- Response to your inquiry within 24 hours
- We provide support in Chinese, English, French, German, Japanese and Spanish
- Extensive multi-media technical resources to help you

- We investigate all quality concerns to ensure our products perform to the highest standards

If the product does not perform as described on this datasheet, we will offer a refund or replacement. For full details of the Abpromise, please visit <https://www.abcam.com/abpromise> or contact our technical team.

Terms and conditions

- Guarantee only valid for products bought direct from Abcam or one of our authorized distributors