


Product datasheet

Anti-ATG4B antibody ab225882

[2 Images](#)

Overview

Product name	Anti-ATG4B antibody
Description	Rabbit polyclonal to ATG4B
Host species	Rabbit
Tested applications	Suitable for: WB, IP
Species reactivity	Reacts with: Mouse, Human Predicted to work with: Rat, Horse, Dog, Pig, Chimpanzee, Rhesus monkey, Gorilla, Giant Panda 
Immunogen	Synthetic peptide within Human ATG4B aa 350-393. The exact sequence is proprietary. (NP_037457.3). Database link: Q9Y4P1
Positive control	WB: HeLa, HEK-293T and NIH/3T3 whole cell lysates. IP: HeLa whole cell lysate.
General notes	<p>The Life Science industry has been in the grips of a reproducibility crisis for a number of years. Abcam is leading the way in addressing this with our range of recombinant monoclonal antibodies and knockout edited cell lines for gold-standard validation. Please check that this product meets your needs before purchasing.</p> <p>If you have any questions, special requirements or concerns, please send us an inquiry and/or contact our Support team ahead of purchase. Recommended alternatives for this product can be found below, along with publications, customer reviews and Q&As</p>

Properties

Form	Liquid
Storage instructions	Shipped at 4°C. Store at +4°C short term (1-2 weeks). Upon delivery aliquot. Store at -20°C long term. Avoid freeze / thaw cycle.
Storage buffer	pH: 6.8 Preservative: 0.09% Sodium azide Constituents: 0.1% BSA, Tris buffered saline
Purity	Immunogen affinity purified
Purification notes	ab225882 was affinity purified using an epitope specific to ATG4B immobilized on solid support.
Clonality	Polyclonal

Isotype

IgG

Applications

The Abpromise guarantee

Our **Abpromise guarantee** covers the use of ab225882 in the following tested applications.

The application notes include recommended starting dilutions; optimal dilutions/concentrations should be determined by the end user.

Application	Abreviews	Notes
WB		1/2000 - 1/10000. Predicted molecular weight: 44 kDa.
IP		Use at 2-5 µg/mg of lysate.

Target

Function

Cysteine protease required for autophagy, which cleaves the C-terminal part of either MAP1LC3, GABARAPL2 or GABARAP, allowing the liberation of form I. A subpopulation of form I is subsequently converted to a smaller form (form II). Form II, with a revealed C-terminal glycine, is considered to be the phosphatidylethanolamine (PE)-conjugated form, and has the capacity for the binding to autophagosomes.

Tissue specificity

Mainly expressed in the skeletal muscle, followed by brain, heart, liver and pancreas.

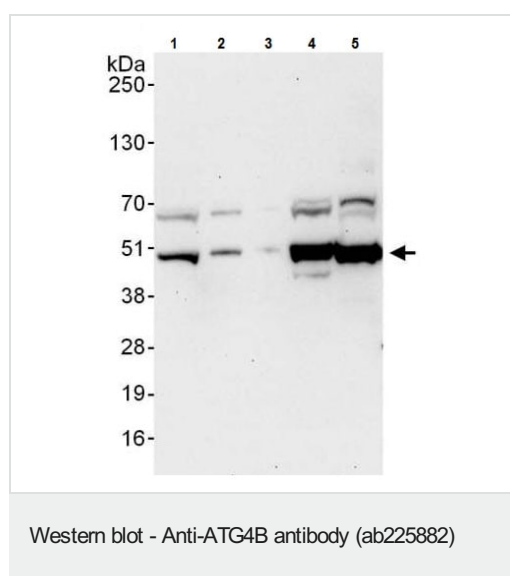
Sequence similarities

Belongs to the peptidase C54 family.

Cellular localization

Cytoplasm.

Images



All lanes : Anti-ATG4B antibody (ab225882) at 0.04 µg/ml

Lane 1 : HeLa (human epithelial cell line from cervix adenocarcinoma) whole cell lysate at 50 µg

Lane 2 : HeLa (human epithelial cell line from cervix adenocarcinoma) whole cell lysate at 15 µg

Lane 3 : HeLa (human epithelial cell line from cervix adenocarcinoma) whole cell lysate at 5 µg

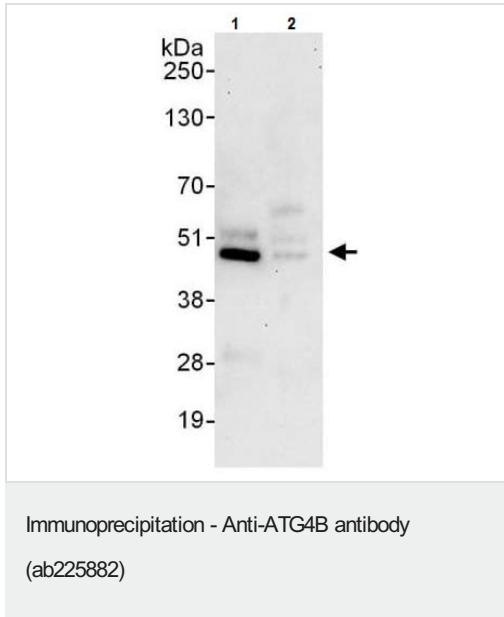
Lane 4 : HEK-293T (human epithelial cell line from embryonic kidney transformed with large T antigen) whole cell lysate at 50 µg

Lane 5 : NIH/3T3 (mouse embryo fibroblast cell line) whole cell lysate at 50 µg

Developed using the ECL technique.

Predicted band size: 44 kDa

Exposure time: 30 seconds



ATG4B was immunoprecipitated from HeLa (human epithelial cell line from cervix adenocarcinoma) whole cell lysate (1 mg for IP, 20% of IP loaded) with ab225882 at 3 µg/mg lysate. Western blot was performed from the immunoprecipitate using ab225882 at 1 µg/ml.

Lane 1: ab225882 IP in HeLa whole cell lysate.

Lane 2: Control IgG IP in HeLa whole cell lysate.

Detection: Chemiluminescence with exposure time of 30 seconds.

Please note: All products are "FOR RESEARCH USE ONLY. NOT FOR USE IN DIAGNOSTIC PROCEDURES"

Our Abpromise to you: Quality guaranteed and expert technical support

- Replacement or refund for products not performing as stated on the datasheet
- Valid for 12 months from date of delivery
- Response to your inquiry within 24 hours
- We provide support in Chinese, English, French, German, Japanese and Spanish
- Extensive multi-media technical resources to help you
- We investigate all quality concerns to ensure our products perform to the highest standards

If the product does not perform as described on this datasheet, we will offer a refund or replacement. For full details of the Abpromise, please visit <https://www.abcam.com/abpromise> or contact our technical team.

Terms and conditions

- Guarantee only valid for products bought direct from Abcam or one of our authorized distributors