

Product datasheet

Anti-ATG4C antibody [EPR15001] ab183516

KO VALIDATED Recombinant RabMAB

[1 References](#) [5 Images](#)

Overview

Product name	Anti-ATG4C antibody [EPR15001]
Description	Rabbit monoclonal [EPR15001] to ATG4C
Host species	Rabbit
Tested applications	Suitable for: WB, IHC-P, Flow Cyt (Intra)
Species reactivity	Reacts with: Human
Immunogen	Recombinant fragment. This information is proprietary to Abcam and/or its suppliers.
Positive control	WB: 293 cells and cell lysates; Jurkat and Raji cell lysates. IHC-P: Human skeletal muscle tissue.
General notes	<p>This product is a recombinant monoclonal antibody, which offers several advantages including:</p> <ul style="list-style-type: none">- High batch-to-batch consistency and reproducibility- Improved sensitivity and specificity- Long-term security of supply- Animal-free production <p>For more information see here.</p> <p>Our RabMAB[®] technology is a patented hybridoma-based technology for making rabbit monoclonal antibodies. For details on our patents, please refer to RabMAB[®] patents.</p>

Properties

Form	Liquid
Storage instructions	Shipped at 4°C. Store at +4°C short term (1-2 weeks). Upon delivery aliquot. Store at -20°C long term. Avoid freeze / thaw cycle.
Storage buffer	pH: 7.2 Preservative: 0.01% Sodium azide Constituents: 59% PBS, 40% Glycerol (glycerin, glycerine), 0.05% BSA
Purity	Protein A purified
Clonality	Monoclonal
Clone number	EPR15001
Isotype	IgG

Applications

The Abpromise guarantee

Our **Abpromise guarantee** covers the use of ab183516 in the following tested applications.

The application notes include recommended starting dilutions; optimal dilutions/concentrations should be determined by the end user.

Application	Abreviews	Notes
WB		1/1000. Detects a band of approximately 52 kDa (predicted molecular weight: 52 kDa).
IHC-P		1/250. Perform heat mediated antigen retrieval with Tris/EDTA buffer pH 9.0 before commencing with IHC staining protocol.
Flow Cyt (Intra)		1/100. ab172730 - Rabbit monoclonal IgG, is suitable for use as an isotype control with this antibody.

Target

Function

Cysteine protease required for autophagy, which cleaves the C-terminal part of either MAP1LC3, GABARAPL2 or GABARAP, allowing the liberation of form I. A subpopulation of form I is subsequently converted to a smaller form (form II). Form II, with a revealed C-terminal glycine, is considered to be the phosphatidylethanolamine (PE)-conjugated form, and has the capacity for the binding to autophagosomes.

Tissue specificity

Highly expressed in skeletal muscle, heart, liver and testis.

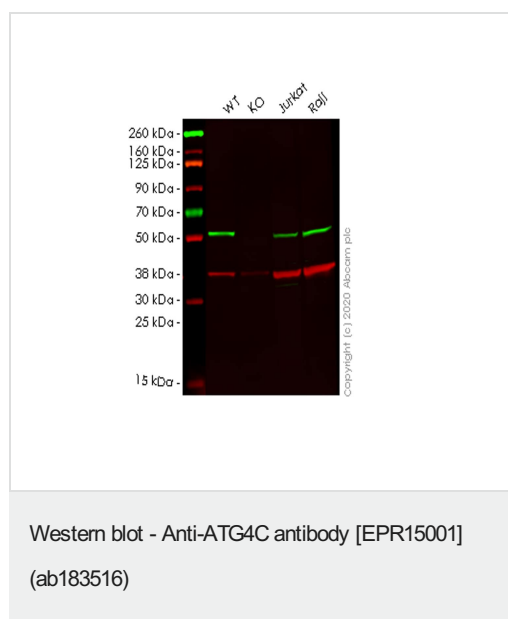
Sequence similarities

Belongs to the peptidase C54 family.

Cellular localization

Cytoplasm.

Images



All lanes : Anti-ATG4C antibody [EPR15001] (ab183516) at 1/1000 dilution

Lane 1 : Wild-type HEK293T cell lysate

Lane 2 : ATG4C knockout HEK293T cell lysate

Lane 3 : Jurkat cell lysate

Lane 4 : Raji cell lysate

Lysates/proteins at 20 µg per lane.

Secondary

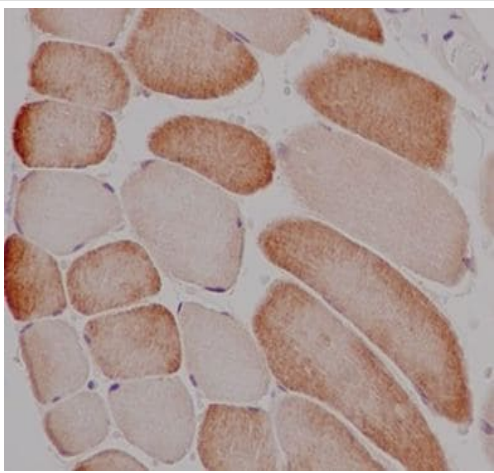
All lanes : Goat anti-Rabbit IgG H&L (IRDye® 800CW) preadsorbed (**ab216773**) at 1/10000 dilution

Predicted band size: 52 kDa

Observed band size: 52 kDa

Lanes 1-4: Merged signal (red and green). Green - ab183516 observed at 52 kDa. Red - loading control **ab8245** observed at 36 kDa.

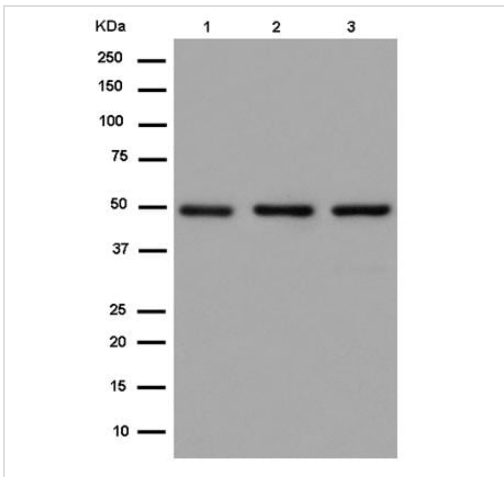
ab183516 Anti-ATG4C antibody [EPR15001] was shown to specifically react with ATG4C in wild-type HEK293T cells. Loss of signal was observed when knockout cell line **ab267324** (knockout cell lysate **ab257847**) was used. Wild-type and ATG4C knockout samples were subjected to SDS-PAGE. ab183516 and Anti-GAPDH antibody [6C5] - Loading Control (**ab8245**) were incubated overnight at 4°C at 1 in 1000 dilution and 1 in 20000 dilution respectively. Blots were developed with Goat anti-Rabbit IgG H&L (IRDye® 800CW) preadsorbed (**ab216773**) and Goat anti-Mouse IgG H&L (IRDye® 680RD) preadsorbed (**ab216776**) secondary antibodies at 1 in 20000 dilution for 1 hour at room temperature before imaging.



Immunohistochemistry (Formalin/PFA-fixed paraffin-embedded sections) - Anti-ATG4C antibody [EPR15001] (ab183516)

Immunohistochemical analysis of paraffin-embedded Human skeletal muscle tissue labeling ATG4C with ab183516 at 1/250 dilution. The slide is counterstained with Hematoxylin.

Perform heat mediated antigen retrieval with EDTA buffer pH 9 before commencing with IHC staining protocol.



Western blot - Anti-ATG4C antibody [EPR15001] (ab183516)

All lanes : Anti-ATG4C antibody [EPR15001] (ab183516) at 1/20000 dilution

Lane 1 : Jurkat cell lysate

Lane 2 : Raji cell lysate

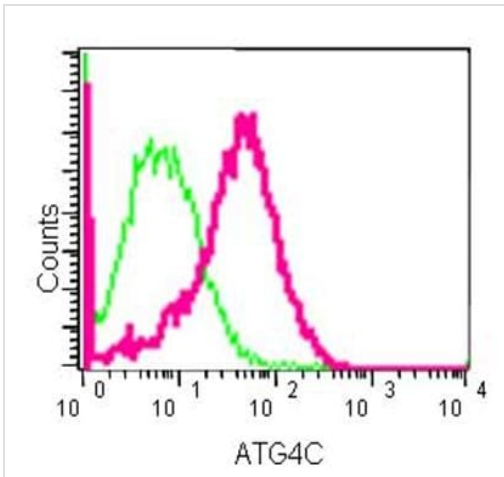
Lane 3 : 293 cell lysate

Lysates/proteins at 20 µg per lane.

Secondary

All lanes : Goat Anti-Rabbit IgG, (H+L), Peroxidase conjugated at 1/1000 dilution


Predicted band size: 52 kDa



Flow Cytometry (Intracellular) - Anti-ATG4C antibody [EPR15001] (ab183516)

Intracellular flow cytometric analysis of 2%paraformaldehyde-fixed 293 cells labeling ATG4Cwith ab183516 at 1/100 dilution (green). Goat anti-rabbit IgG (FITC) at 1/150 dilution was used as the secondary antibody. Rabbit monoclonal IgG was used as the isotype control (red).

Why choose a recombinant antibody?



Research with confidence
Consistent and reproducible results

Long-term and scalable supply
Recombinant technology

Success from the first experiment
Confirmed specificity

Ethical standards compliant
Animal-free production

Anti-ATG4C antibody [EPR15001] (ab183516)

Please note: All products are "FOR RESEARCH USE ONLY. NOT FOR USE IN DIAGNOSTIC PROCEDURES"

Our Abpromise to you: Quality guaranteed and expert technical support

- Replacement or refund for products not performing as stated on the datasheet
- Valid for 12 months from date of delivery
- Response to your inquiry within 24 hours
- We provide support in Chinese, English, French, German, Japanese and Spanish
- Extensive multi-media technical resources to help you
- We investigate all quality concerns to ensure our products perform to the highest standards

If the product does not perform as described on this datasheet, we will offer a refund or replacement. For full details of the Abpromise, please visit <https://www.abcam.com/abpromise> or contact our technical team.

Terms and conditions

- Guarantee only valid for products bought direct from Abcam or one of our authorized distributors