


Product datasheet

Anti-ATL3 antibody ab117819

★★★★★ [1 Abreviews](#) [1 References](#) [2 Images](#)

Overview

Product name	Anti-ATL3 antibody
Description	Rabbit polyclonal to ATL3
Host species	Rabbit
Tested applications	Suitable for: WB, IP
Species reactivity	Reacts with: Mouse, Human Predicted to work with: Rat, Rabbit, Guinea pig, Dog, Chimpanzee, Rhesus monkey, Gorilla, Chinese hamster, Orangutan 
Immunogen	Synthetic peptide, corresponding to a region within amino acids 350-400 of Human ATL3 according to NP_056274.3.
Positive control	Whole cell lysate from HeLa, Jurkat, 293T and mouse NIH3T3 cells.
General notes	<p>The Life Science industry has been in the grips of a reproducibility crisis for a number of years. Abcam is leading the way in addressing this with our range of recombinant monoclonal antibodies and knockout edited cell lines for gold-standard validation. Please check that this product meets your needs before purchasing.</p> <p>If you have any questions, special requirements or concerns, please send us an inquiry and/or contact our Support team ahead of purchase. Recommended alternatives for this product can be found below, along with publications, customer reviews and Q&As</p>

Properties

Form	Liquid
Storage instructions	Shipped at 4°C. Upon delivery aliquot and store at -20°C. Avoid freeze / thaw cycles.
Storage buffer	pH: 6.8 Preservative: 0.09% Sodium azide Constituents: 0.1% BSA, 99% Tris buffered saline
Purity	Immunogen affinity purified
Clonality	Polyclonal
Isotype	IgG

Applications

The Abpromise guarantee

Our **Abpromise guarantee** covers the use of ab117819 in the following tested applications.

The application notes include recommended starting dilutions; optimal dilutions/concentrations should be determined by the end user.

Application	Abreviews	Notes
WB	★★★★★ (1)	1/2000 - 1/10000. Predicted molecular weight: 61 kDa.
IP		Use at 2-10 µg/mg of lysate.

Target

Function

GTPase tethering membranes through formation of trans-homooligomer and mediating homotypic fusion of endoplasmic reticulum membranes. Functions in endoplasmic reticulum tubular network biogenesis.

Tissue specificity

Expressed in peripheral tissues (at protein level).

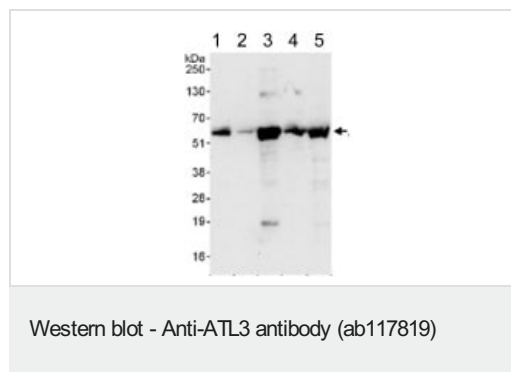
Sequence similarities

Belongs to the GBP family. Atlastin subfamily.

Cellular localization

Endoplasmic reticulum membrane.

Images



All lanes : Anti-ATL3 antibody (ab117819) at 0.04 µg/ml

Lane 1 : HeLa whole cell lysate at 50 µg

Lane 2 : HeLa whole cell lysate at 15 µg

Lane 3 : Jurkat whole cell lysate at 50 µg

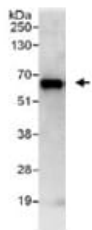
Lane 4 : 293T whole cell lysate at 50 µg

Lane 5 : NIH3T3 whole cell lysate at 50 µg

Developed using the ECL technique.

Predicted band size: 61 kDa

Exposure time: 30 seconds



Immunoprecipitation - Anti-ATL3 antibody
(ab117819)

Detection of Human ATL3 by Western Blot of Immunoprecipitation. ab117819 at 1 µg/ml staining ATL3 in HeLa whole cell lysate immunoprecipitated using ab117819 at 6 µg/mg lysate (1 mg/IP; 20% of IP loaded/lane). Detection: Chemiluminescence with exposure time of 10 seconds.

Please note: All products are "FOR RESEARCH USE ONLY. NOT FOR USE IN DIAGNOSTIC PROCEDURES"

Our Abpromise to you: Quality guaranteed and expert technical support

- Replacement or refund for products not performing as stated on the datasheet
- Valid for 12 months from date of delivery
- Response to your inquiry within 24 hours
- We provide support in Chinese, English, French, German, Japanese and Spanish
- Extensive multi-media technical resources to help you
- We investigate all quality concerns to ensure our products perform to the highest standards

If the product does not perform as described on this datasheet, we will offer a refund or replacement. For full details of the Abpromise, please visit <https://www.abcam.com/abpromise> or contact our technical team.

Terms and conditions

- Guarantee only valid for products bought direct from Abcam or one of our authorized distributors