

Product datasheet

Anti-ATL3 antibody ab229095

4 Images

Overview

Product name	Anti-ATL3 antibody
Description	Rabbit polyclonal to ATL3
Host species	Rabbit
Tested applications	Suitable for: IHC-P, WB
Species reactivity	Reacts with: Rat, Human
Immunogen	Recombinant fragment within Human ATL3 (internal sequence). The exact sequence is proprietary. Database link: Q6DD88
Positive control	WB: NT2/D1 whole cell lysate. IHC-P: Rat liver, brain and cervix tissue.
General notes	<p>The Life Science industry has been in the grips of a reproducibility crisis for a number of years. Abcam is leading the way in addressing this with our range of recombinant monoclonal antibodies and knockout edited cell lines for gold-standard validation. Please check that this product meets your needs before purchasing.</p> <p>If you have any questions, special requirements or concerns, please send us an inquiry and/or contact our Support team ahead of purchase. Recommended alternatives for this product can be found below, along with publications, customer reviews and Q&As</p>

Properties

Form	Liquid
Storage instructions	Shipped at 4°C. Store at +4°C short term (1-2 weeks). Upon delivery aliquot. Store at -20°C. Avoid freeze / thaw cycle.
Storage buffer	pH: 7.00 Preservative: 0.01% Thimerosal (merthiolate) Constituents: 78.99% PBS, 1% BSA, 20% Glycerol (glycerin, glycerine)
Purity	Immunogen affinity purified
Clonality	Polyclonal
Isotype	IgG

Applications

The Abpromise guarantee

Our **Abpromise guarantee** covers the use of ab229095 in the following tested applications.

The application notes include recommended starting dilutions; optimal dilutions/concentrations should be determined by the end user.

Application	Abreviews	Notes
IHC-P		1/100 - 1/1000.
WB		1/500 - 1/3000. Predicted molecular weight: 61 kDa.

Target

Function

GTPase tethering membranes through formation of trans-homooligomer and mediating homotypic fusion of endoplasmic reticulum membranes. Functions in endoplasmic reticulum tubular network biogenesis.

Tissue specificity

Expressed in peripheral tissues (at protein level).

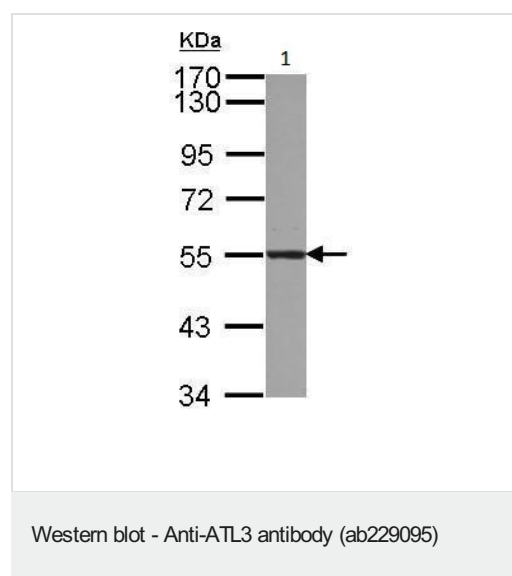
Sequence similarities

Belongs to the GBP family. Atlastin subfamily.

Cellular localization

Endoplasmic reticulum membrane.

Images

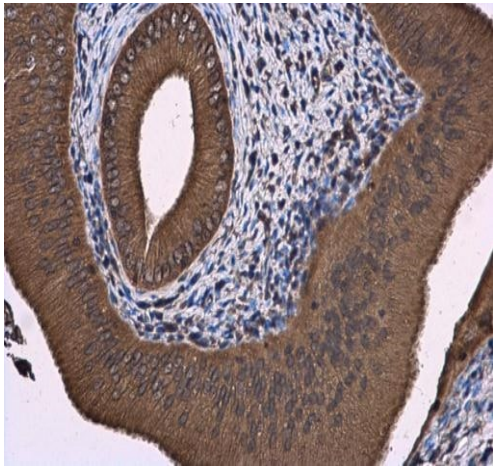


Anti-ATL3 antibody (ab229095) at 1/1000 dilution + NT2/D1 whole cell lysate at 30 µg

Developed using the ECL technique.

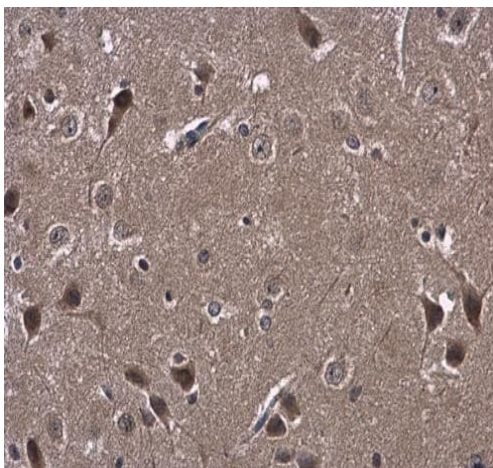
Predicted band size: 61 kDa

7.5 % SDS-PAGE gel.



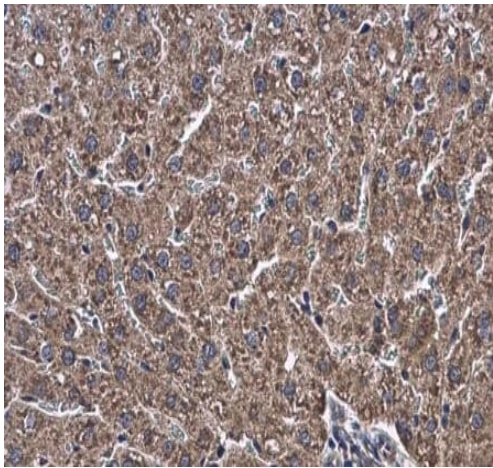
Immunohistochemistry (Formalin/PFA-fixed paraffin-embedded sections) - Anti-ATL3 antibody (ab229095)

Paraffin-embedded rat cervix tissue stained for ATL3 protein using ab229095 at 1/500 dilution in immunohistochemical analysis.



Immunohistochemistry (Formalin/PFA-fixed paraffin-embedded sections) - Anti-ATL3 antibody (ab229095)

Paraffin-embedded rat brain tissue stained for ATL3 protein using ab229095 at 1/500 dilution in immunohistochemical analysis.



Paraffin-embedded rat liver tissue stained for ATL3 protein using ab229095 at 1/500 dilution in immunohistochemical analysis.

Immunohistochemistry (Formalin/PFA-fixed paraffin-embedded sections) - Anti-ATL3 antibody (ab229095)

Please note: All products are "FOR RESEARCH USE ONLY. NOT FOR USE IN DIAGNOSTIC PROCEDURES"

Our Abpromise to you: Quality guaranteed and expert technical support

- Replacement or refund for products not performing as stated on the datasheet
- Valid for 12 months from date of delivery
- Response to your inquiry within 24 hours
- We provide support in Chinese, English, French, German, Japanese and Spanish
- Extensive multi-media technical resources to help you
- We investigate all quality concerns to ensure our products perform to the highest standards

If the product does not perform as described on this datasheet, we will offer a refund or replacement. For full details of the Abpromise, please visit <https://www.abcam.com/abpromise> or contact our technical team.

Terms and conditions

- Guarantee only valid for products bought direct from Abcam or one of our authorized distributors