

## Product datasheet

### Anti-ATP citrate lyase antibody ab235926

[4 Images](#)

#### Overview

<b>Product name</b>	Anti-ATP citrate lyase antibody
<b>Description</b>	Rabbit polyclonal to ATP citrate lyase
<b>Host species</b>	Rabbit
<b>Tested applications</b>	<b>Suitable for:</b> IHC-P, ICC/IF
<b>Species reactivity</b>	<b>Reacts with:</b> Human
<b>Immunogen</b>	Recombinant fragment corresponding to Human ATP citrate lyase aa 4-265. Database link: <a href="#">P53396</a>
<b>Positive control</b>	IHC-P: Human breast cancer, gastric cancer and testis tissue. ICC/IF: HepG2 cells.
<b>General notes</b>	<p>The Life Science industry has been in the grips of a reproducibility crisis for a number of years. Abcam is leading the way in addressing this with our range of recombinant monoclonal antibodies and knockout edited cell lines for gold-standard validation. Please check that this product meets your needs before purchasing.</p> <p>If you have any questions, special requirements or concerns, please send us an inquiry and/or contact our Support team ahead of purchase. Recommended alternatives for this product can be found below, along with publications, customer reviews and Q&amp;As</p>

#### Properties

<b>Form</b>	Liquid
<b>Storage instructions</b>	Shipped at 4°C. Store at +4°C short term (1-2 weeks). Upon delivery aliquot. Store at -20°C long term. Avoid freeze / thaw cycle.
<b>Storage buffer</b>	pH: 7.40 Preservative: 0.03% Proclin 300 Constituents: 50% Glycerol (glycerin, glycerine), PBS
<b>Purity</b>	Protein G purified
<b>Purification notes</b>	Purity >95%
<b>Clonality</b>	Polyclonal
<b>Isotype</b>	IgG

#### Applications

## The Abpromise guarantee

Our **Abpromise guarantee** covers the use of ab235926 in the following tested applications.

The application notes include recommended starting dilutions; optimal dilutions/concentrations should be determined by the end user.

Application	Abreviews	Notes
IHC-P		1/20 - 1/200.
ICC/IF		1/50 - 1/200.

## Target

### Function

ATP-citrate synthase is the primary enzyme responsible for the synthesis of cytosolic acetyl-CoA in many tissues. Has a central role in de novo lipid synthesis. In nervous tissue it may be involved in the biosynthesis of acetylcholine.

### Sequence similarities

In the N-terminal section; belongs to the succinate/malate CoA ligase beta subunit family.  
In the C-terminal section; belongs to the succinate/malate CoA ligase alpha subunit family.  
Contains 1 ATP-grasp domain.

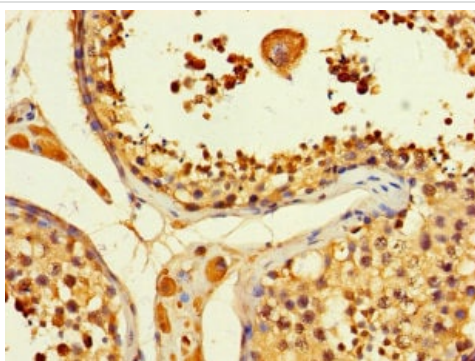
### Post-translational modifications

ISGylated.  
Acetylated at Lys-540, Lys-546 and Lys-554 by KAT2B/PCAF. Acetylation is promoted by glucose and stabilizes the protein, probably by preventing ubiquitination at the same sites. Acetylation promotes de novo lipid synthesis. Deacetylated by SIRT2.  
Ubiquitinated at Lys-540, Lys-546 and Lys-554 by UBR4, leading to its degradation.  
Ubiquitination is probably inhibited by acetylation at same site.

### Cellular localization

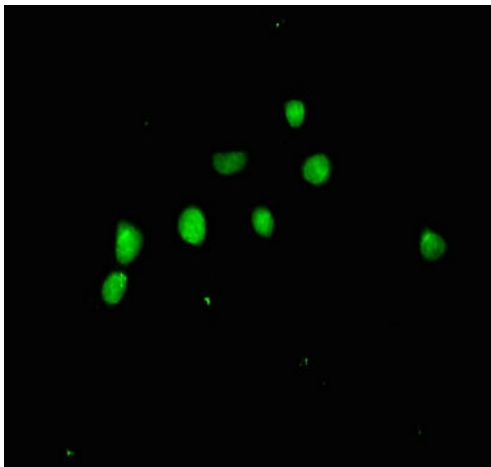
Cytoplasm.

## Images



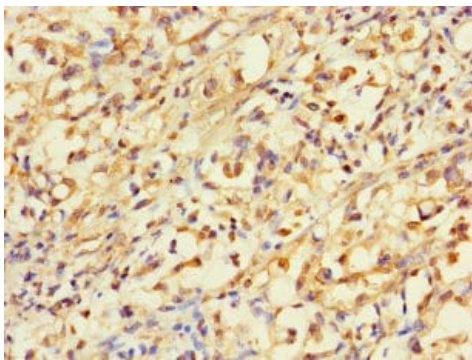
Paraffin-embedded human testis tissue stained for ATP citrate lyase with ab235926 at a 1/100 dilution in immunohistochemical analysis.

Immunohistochemistry (Formalin/PFA-fixed paraffin-embedded sections) - Anti-ATP citrate lyase antibody (ab235926)



Immunocytochemistry/ Immunofluorescence - Anti-ATP citrate lyase antibody (ab235926)

HepG2 (Human liver hepatocellular carcinoma cell line) cells stained for ATP citrate lyase using ab235926 at a dilution of 1/100 in ICC/IF. Secondary used is an Alexa-Fluor<sup>®</sup>488-conjugated Goat Anti-Rabbit IgG (H+L).



Immunohistochemistry (Formalin/PFA-fixed paraffin-embedded sections) - Anti-ATP citrate lyase antibody (ab235926)

Paraffin-embedded human gastric cancer tissue stained for ATP citrate lyase with ab235926 at a 1/100 dilution in immunohistochemical analysis.



Immunohistochemistry (Formalin/PFA-fixed paraffin-embedded sections) - Anti-ATP citrate lyase antibody (ab235926)

Paraffin-embedded human breast cancer tissue stained for ATP citrate lyase with ab235926 at a 1/100 dilution in immunohistochemical analysis.

**Please note:** All products are "FOR RESEARCH USE ONLY. NOT FOR USE IN DIAGNOSTIC PROCEDURES"

### **Our Abpromise to you: Quality guaranteed and expert technical support**

---

- Replacement or refund for products not performing as stated on the datasheet
- Valid for 12 months from date of delivery
- Response to your inquiry within 24 hours
  
- We provide support in Chinese, English, French, German, Japanese and Spanish
- Extensive multi-media technical resources to help you
- We investigate all quality concerns to ensure our products perform to the highest standards

If the product does not perform as described on this datasheet, we will offer a refund or replacement. For full details of the Abpromise, please visit <https://www.abcam.com/abpromise> or contact our technical team.

### **Terms and conditions**

---

- Guarantee only valid for products bought direct from Abcam or one of our authorized distributors