

Product datasheet

Anti-ATP11A antibody ab105351

3 Images

Overview

Product name	Anti-ATP11A antibody
Description	Rabbit polyclonal to ATP11A
Host species	Rabbit
Specificity	ab105351 is predicted to not cross react with AT11B. At least two isoforms of ATP11A are known to exist; this antibody will recognize both.
Tested applications	Suitable for: WB, ICC
Species reactivity	Reacts with: Human
Immunogen	Synthetic peptide corresponding to Human ATP11A (N terminal). Database link: NP_115565
Positive control	WB: K562 cell lysate ICC: K562 cells
General notes	<p>The Life Science industry has been in the grips of a reproducibility crisis for a number of years. Abcam is leading the way in addressing this with our range of recombinant monoclonal antibodies and knockout edited cell lines for gold-standard validation. Please check that this product meets your needs before purchasing.</p> <p>If you have any questions, special requirements or concerns, please send us an inquiry and/or contact our Support team ahead of purchase. Recommended alternatives for this product can be found below, along with publications, customer reviews and Q&As</p>

Properties

Form	Liquid
Storage instructions	Shipped at 4°C. Store at +4°C.
Storage buffer	pH: 7.2 Preservative: 0.02% Sodium azide Constituent: PBS
Purity	Immunogen affinity purified
Clonality	Polyclonal
Isotype	IgG

Applications

The Abpromise guarantee

Our **Abpromise guarantee** covers the use of ab105351 in the following tested applications.

The application notes include recommended starting dilutions; optimal dilutions/concentrations should be determined by the end user.

Application	Abreviews	Notes
WB		Use a concentration of 1 - 2 µg/ml. Predicted molecular weight: 130 kDa.
ICC		Use a concentration of 10 - 20 µg/ml.

Target

Function

Catalytic component of a P4-ATPase flippase complex which catalyzes the hydrolysis of ATP coupled to the transport of aminophospholipids from the outer to the inner leaflet of various membranes and ensures the maintenance of asymmetric distribution of phospholipids. Phospholipid translocation seems also to be implicated in vesicle formation and in uptake of lipid signaling molecules (Probable). May be involved in the uptake of farnesyltransferase inhibitor drugs, such as lonafarnib.

Sequence similarities

Belongs to the cation transport ATPase (P-type) (TC 3.A.3) family. Type IV subfamily.

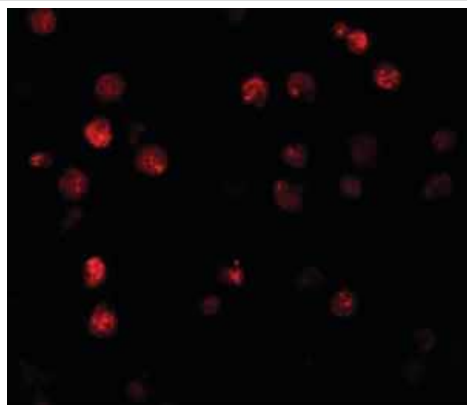
Cellular localization

Cell membrane. Early endosome. Recycling endosome. Endoplasmic reticulum. Exit from the endoplasmic reticulum requires the presence of TMEM30A, but not TMEM30B. In the presence of TMEM30A, predominantly located in the plasma membrane.

Form

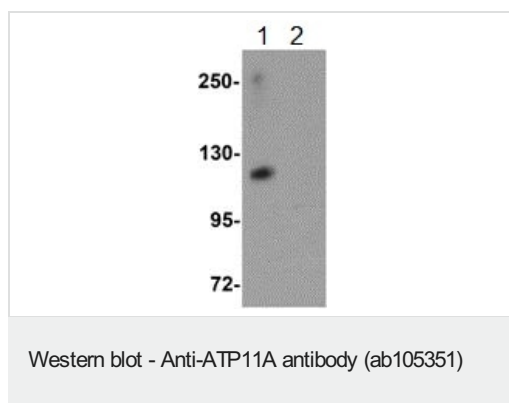
P-type ATPases, such as ATP11A, are phosphorylated in their intermediate state and drive uphill transport of ions across membranes.

Images



Immunofluorescence of ATP11A in K562 cells with ab105351 at 20 µg/mL.

Immunocytochemistry - Anti-ATP11A antibody
(ab105351)



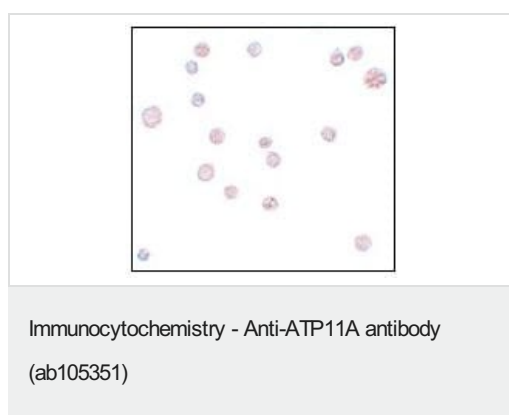
All lanes : Anti-ATP11A antibody (ab105351) at 1 µg/ml

Lane 1 : K562 cell lysate

Lane 2 : K562 cell lysate with blocking peptide

Lysates/proteins at 15 µg per lane.

Predicted band size: 130 kDa



ab105351, at 10 µg/ml, staining ATP11A in K562 cells by Immunocytochemistry.

Please note: All products are "FOR RESEARCH USE ONLY. NOT FOR USE IN DIAGNOSTIC PROCEDURES"

Our Abpromise to you: Quality guaranteed and expert technical support

- Replacement or refund for products not performing as stated on the datasheet
- Valid for 12 months from date of delivery
- Response to your inquiry within 24 hours
- We provide support in Chinese, English, French, German, Japanese and Spanish
- Extensive multi-media technical resources to help you
- We investigate all quality concerns to ensure our products perform to the highest standards

If the product does not perform as described on this datasheet, we will offer a refund or replacement. For full details of the Abpromise, please visit <https://www.abcam.com/abpromise> or contact our technical team.

Terms and conditions

- Guarantee only valid for products bought direct from Abcam or one of our authorized distributors