




Product datasheet

Anti-ATP13A1 antibody ab230786

[2 Images](#)

Overview

Product name	Anti-ATP13A1 antibody
Description	Goat polyclonal to ATP13A1
Host species	Goat
Tested applications	Suitable for: IHC-P, WB
Species reactivity	Reacts with: Human Predicted to work with: Mouse, Rat, Rabbit, Cow, Monkey 
Immunogen	Synthetic peptide within Human ATP13A1 aa 950-1050 (internal sequence) (Cysteine residue). The exact immunogen sequence used to generate this antibody is proprietary information. If additional detail on the immunogen is needed to determine the suitability of the antibody for your needs, please contact our Scientific Support team to discuss your requirements. (NP_065143.2). Database link: Q9HD20  Run BLAST with  Run BLAST with
Positive control	IHC-P: Human thyroid tissue. WB: Human kidney lysate.
General notes	<p>The Life Science industry has been in the grips of a reproducibility crisis for a number of years. Abcam is leading the way in addressing this with our range of recombinant monoclonal antibodies and knockout edited cell lines for gold-standard validation. Please check that this product meets your needs before purchasing.</p> <p>If you have any questions, special requirements or concerns, please send us an inquiry and/or contact our Support team ahead of purchase. Recommended alternatives for this product can be found below, along with publications, customer reviews and Q&As</p>

Properties

Form	Liquid
Storage instructions	Shipped at 4°C. Store at +4°C short term (1-2 weeks). Upon delivery aliquot. Store at -20°C long term. Avoid freeze / thaw cycle.
Storage buffer	pH: 7.30 Preservative: 0.02% Sodium azide Constituents: Tris buffered saline, 0.5% BSA
Purity	Immunogen affinity purified

Clonality	Polyclonal
Isotype	IgG

Applications

The Abpromise guarantee Our **Abpromise guarantee** covers the use of ab230786 in the following tested applications. The application notes include recommended starting dilutions; optimal dilutions/concentrations should be determined by the end user.

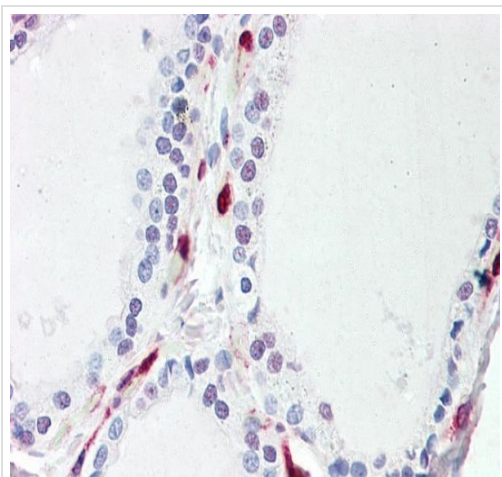
Application	Abreviews	Notes
IHC-P		Use a concentration of 5 µg/ml. Perform heat mediated antigen retrieval before commencing with IHC staining protocol.
WB		Use a concentration of 0.3 - 1 µg/ml. Predicted molecular weight: 133 kDa.

Target

Relevance ATP13A1 belongs to the cation transport ATPase (P type) family. Type V subfamily. There are three named isoforms produced by alternative splicing.

Cellular localization Membrane; Multi pass membrane protein.

Images



Formalin-fixed, paraffin-embedded human thyroid tissue stained for ATP13A1 using ab230786 at 5 µg/ml in immunohistochemical analysis.

Immunohistochemistry (Formalin/PFA-fixed paraffin-embedded sections) - Anti-ATP13A1 antibody (ab230786)



Anti-ATP13A1 antibody (ab230786) at 0.3 µg/ml + Human kidney lysate (in RIPA buffer) at 35 µg

Developed using the ECL technique.

Predicted band size: 133 kDa

Primary incubation was 1 hour.

Please note: All products are "FOR RESEARCH USE ONLY. NOT FOR USE IN DIAGNOSTIC PROCEDURES"

Our Abpromise to you: Quality guaranteed and expert technical support

- Replacement or refund for products not performing as stated on the datasheet
- Valid for 12 months from date of delivery
- Response to your inquiry within 24 hours
- We provide support in Chinese, English, French, German, Japanese and Spanish
- Extensive multi-media technical resources to help you
- We investigate all quality concerns to ensure our products perform to the highest standards

If the product does not perform as described on this datasheet, we will offer a refund or replacement. For full details of the Abpromise, please visit <https://www.abcam.com/abpromise> or contact our technical team.

Terms and conditions

- Guarantee only valid for products bought direct from Abcam or one of our authorized distributors