


Product datasheet

Anti-ATP1A2 antibody [EPR11896(B)] ab166888

Recombinant RabMAb

[3 References](#) [3 Images](#)

Overview

Product name	Anti-ATP1A2 antibody [EPR11896(B)]
Description	Rabbit monoclonal [EPR11896(B)] to ATP1A2
Host species	Rabbit
Tested applications	Suitable for: WB Unsuitable for: ICC/IF, IHC-P or IP
Species reactivity	Reacts with: Human Predicted to work with: Mouse, Rat 
Immunogen	Synthetic peptide. This information is proprietary to Abcam and/or its suppliers.
Positive control	Human skeletal muscle and fetal heart lysates
General notes	<p>This product is a recombinant monoclonal antibody, which offers several advantages including:</p> <ul style="list-style-type: none">- High batch-to-batch consistency and reproducibility- Improved sensitivity and specificity- Long-term security of supply- Animal-free production <p>For more information see here.</p> <p>Our RabMAb[®] technology is a patented hybridoma-based technology for making rabbit monoclonal antibodies. For details on our patents, please refer to RabMAb[®] patents.</p>

Properties

Form	Liquid
Storage instructions	Shipped at 4°C. Upon delivery aliquot and store at -20°C. Avoid freeze / thaw cycles.
Storage buffer	pH: 7.2 Preservative: 0.01% Sodium azide Constituents: 9% PBS, 40% Glycerol (glycerin, glycerine), 0.05% BSA, 50% Tissue culture supernatant
Purity	Tissue culture supernatant
Clonality	Monoclonal
Clone number	EPR11896(B)

Isotype

IgG

Applications

The Abpromise guarantee

Our **Abpromise guarantee** covers the use of ab166888 in the following tested applications.

The application notes include recommended starting dilutions; optimal dilutions/concentrations should be determined by the end user.

Application	Abreviews	Notes
WB		1/1000 - 1/5000. Detects a band of approximately 102 kDa (predicted molecular weight: 112 kDa).

Application notes

Is unsuitable for ICC/IF, IHC-P or IP.

Target

Function

This is the catalytic component of the active enzyme, which catalyzes the hydrolysis of ATP coupled with the exchange of sodium and potassium ions across the plasma membrane. This action creates the electrochemical gradient of sodium and potassium, providing the energy for active transport of various nutrients.

Involvement in disease

Defects in ATP1A2 are the cause of migraine familial hemiplegic type 2 (FHM2) [MIM:602481]. FHM2 is a rare, severe, autosomal dominant subtype of migraine characterized by aura and some hemiparesis.

Defects in ATP1A2 are a cause of alternating hemiplegia of childhood (AHC) [MIM:104290]. AHC is typically distinguished from familial hemiplegic migraine by infantile onset of the symptoms and high prevalence of associated neurological deficits that become increasingly obvious with age.

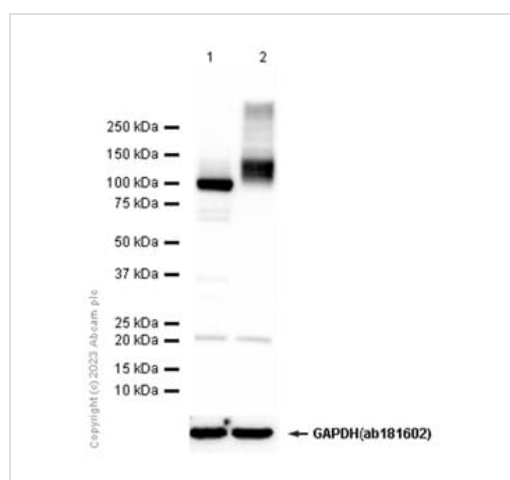
Sequence similarities

Belongs to the cation transport ATPase (P-type) (TC 3.A.3) family. Type IIC subfamily.

Cellular localization

Membrane. Cell membrane.

Images



Western blot - Anti-ATP1A2 antibody
[EPR11896(B)] (ab166888)

All lanes : Anti-ATP1A2 antibody [EPR11896(B)] (ab166888)

Lane 1 : Human cerebellum lysate unboiled

Lane 2 : Human cerebellum lysate boiled

Lysates/proteins at 20 µg per lane.

Secondary

All lanes : Goat Anti-Rabbit IgG (HRP) with minimal cross-reactivity with human IgG

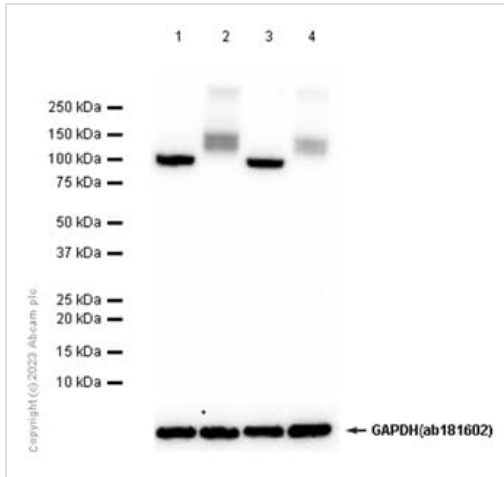
Predicted band size: 112 kDa

Observed band size: 102 kDa

Exposure time: 1 second

Blocking and diluting buffer: 5% NFDm/TBST

We recommend not to boil the samples after lysis to get desired WB results



Western blot - Anti-ATP1A2 antibody
[EPR11896(B)] (ab166888)

All lanes : Anti-ATP1A2 antibody [EPR11896(B)] (ab166888) at 1/1000 dilution

Lane 1 : Mouse brain lysate unboiled

Lane 2 : Mouse brain lysate boiled

Lane 3 : Rat brain lysate unboiled

Lane 4 : Rat brain lysate boiled

Lysates/proteins at 20 µg per lane.

Secondary

All lanes : Goat Anti-Rabbit IgG H&L (HRP) (**ab97051**) at 1/20000 dilution

Predicted band size: 112 kDa

Observed band size: 102 kDa

Exposure time: 1 second

Blocking and diluting buffer: 5% NFDm/TBST

We recommend not to boil the samples after lysis to get desired WB results

Why choose a recombinant antibody?



Research with confidence
Consistent and reproducible results



Long-term and scalable supply
Recombinant technology



Success from the first experiment
Confirmed specificity



Ethical standards compliant
Animal-free production

Anti-ATP1A2 antibody [EPR11896(B)] (ab166888)

Please note: All products are "FOR RESEARCH USE ONLY. NOT FOR USE IN DIAGNOSTIC PROCEDURES"

Our Abpromise to you: Quality guaranteed and expert technical support

- Replacement or refund for products not performing as stated on the datasheet
- Valid for 12 months from date of delivery
- Response to your inquiry within 24 hours
- We provide support in Chinese, English, French, German, Japanese and Spanish
- Extensive multi-media technical resources to help you
- We investigate all quality concerns to ensure our products perform to the highest standards

If the product does not perform as described on this datasheet, we will offer a refund or replacement. For full details of the Abpromise, please visit <https://www.abcam.com/abpromise> or contact our technical team.

Terms and conditions

- Guarantee only valid for products bought direct from Abcam or one of our authorized distributors