


Product datasheet

Anti-ATP1B2 antibody [EPR15460(B)] ab185210

Recombinant RabMAb

[6 References](#) [4 Images](#)

Overview

Product name	Anti-ATP1B2 antibody [EPR15460(B)]
Description	Rabbit monoclonal [EPR15460(B)] to ATP1B2
Host species	Rabbit
Tested applications	Suitable for: WB, IP
Species reactivity	Reacts with: Human Predicted to work with: Mouse, Rat 
Immunogen	Synthetic peptide. This information is proprietary to Abcam and/or its suppliers.
Positive control	Y79 and Human cerebellum lysates.
General notes	<p>This product is a recombinant monoclonal antibody, which offers several advantages including:</p> <ul style="list-style-type: none"> - High batch-to-batch consistency and reproducibility - Improved sensitivity and specificity - Long-term security of supply - Animal-free production <p>For more information see here.</p> <p>Our RabMAb[®] technology is a patented hybridoma-based technology for making rabbit monoclonal antibodies. For details on our patents, please refer to RabMAb[®] patents.</p>

Properties

Form	Liquid
Storage instructions	Shipped at 4°C. Store at +4°C short term (1-2 weeks). Upon delivery aliquot. Store at -20°C long term. Avoid freeze / thaw cycle.
Storage buffer	pH: 7.2 Preservative: 0.01% Sodium azide Constituents: 59% PBS, 40% Glycerol (glycerin, glycerine), 0.05% BSA
Purity	Protein A purified
Clonality	Monoclonal
Clone number	EPR15460(B)
Isotype	IgG

Applications

The Abpromise guarantee

Our **Abpromise guarantee** covers the use of ab185210 in the following tested applications.

The application notes include recommended starting dilutions; optimal dilutions/concentrations should be determined by the end user.

Application	Abreviews	Notes
WB		1/10000 - 1/50000. Detects a band of approximately 45-50 kDa (predicted molecular weight: 33 kDa).
IP		1/50 - 1/70.

Target

Function

This is the non-catalytic component of the active enzyme, which catalyzes the hydrolysis of ATP coupled with the exchange of Na(+) and K(+) ions across the plasma membrane. The exact function of the beta-2 subunit is not known.

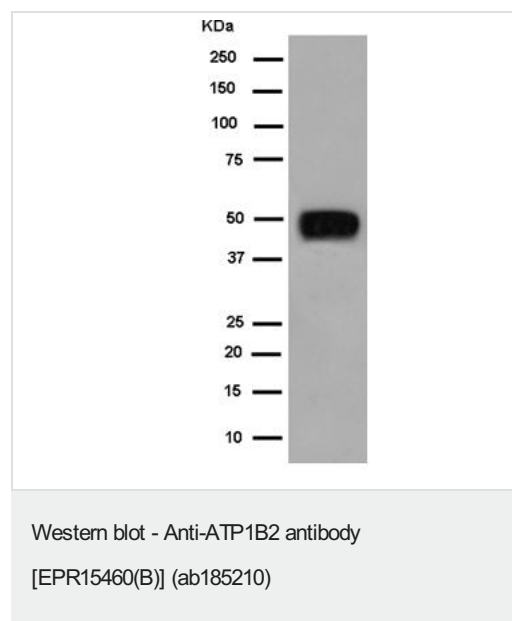
Sequence similarities

Belongs to the X(+)/potassium ATPases subunit beta family.

Cellular localization

Membrane.

Images

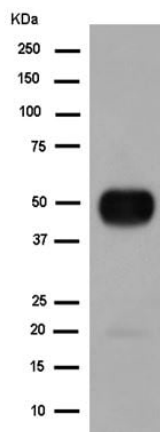


Anti-ATP1B2 antibody [EPR15460(B)] (ab185210) at 1/5000 dilution + Y79 (Human retinoblastoma cell line) cell lysate at 20 µg

Secondary

Goat Anti-Rabbit IgG, (H+L), Peroxidase conjugated at 1/1000 dilution

Predicted band size: 33 kDa



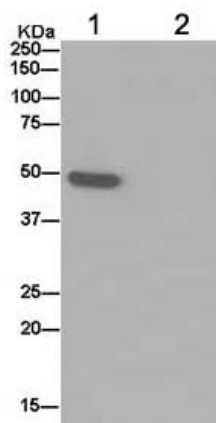
Western blot - Anti-ATP1B2 antibody
[EPR15460(B)] (ab185210)

Anti-ATP1B2 antibody [EPR15460(B)] (ab185210) at 1/20000
dilution + Human cerebellum lysate at 20 µg

Secondary

Goat Anti-Rabbit IgG, (H+L), Peroxidase conjugated at 1/1000
dilution

Predicted band size: 33 kDa



Immunoprecipitation - Anti-ATP1B2 antibody
[EPR15460(B)] (ab185210)

Western blot analysis of immunoprecipitation pellet from Human
cerebellum lysate immunoprecipitated using ab185210 at 1/50
dilution (lane 1) or PBS control (lane 2).

Secondary: Anti-Rabbit IgG (HRP), specific to the non-reduced form
of IgG at 1/1500 dilution.

Why choose a recombinant antibody?



Research with confidence
Consistent and reproducible results



Long-term and scalable supply
Recombinant technology



Success from the first experiment
Confirmed specificity



Ethical standards compliant
Animal-free production

Anti-ATP1B2 antibody [EPR15460(B)] (ab185210)

Please note: All products are "FOR RESEARCH USE ONLY. NOT FOR USE IN DIAGNOSTIC PROCEDURES"

Our Abpromise to you: Quality guaranteed and expert technical support

- Replacement or refund for products not performing as stated on the datasheet
- Valid for 12 months from date of delivery
- Response to your inquiry within 24 hours
- We provide support in Chinese, English, French, German, Japanese and Spanish
- Extensive multi-media technical resources to help you
- We investigate all quality concerns to ensure our products perform to the highest standards

If the product does not perform as described on this datasheet, we will offer a refund or replacement. For full details of the Abpromise, please visit <https://www.abcam.com/abpromise> or contact our technical team.

Terms and conditions

- Guarantee only valid for products bought direct from Abcam or one of our authorized distributors