


# Anti-ATP1B3 antibody ab67409

[1 Abreviews](#) [2 References](#) [1 Image](#)

### Overview

<b>Product name</b>	Anti-ATP1B3 antibody
<b>Description</b>	Mouse polyclonal to ATP1B3
<b>Host species</b>	Mouse
<b>Tested applications</b>	<b>Suitable for:</b> WB
<b>Species reactivity</b>	<b>Reacts with:</b> Human <b>Predicted to work with:</b> Mammals 
<b>Immunogen</b>	Recombinant full length protein within Human ATP1B3 aa 1-300. The exact immunogen sequence used to generate this antibody is proprietary information. If additional detail on the immunogen is needed to determine the suitability of the antibody for your needs, please <b><u>contact</u></b> our Scientific Support team to discuss your requirements.
<b>Positive control</b>	ATP1B3 transfected 293T lysate
<b>General notes</b>	<p>The Life Science industry has been in the grips of a reproducibility crisis for a number of years. Abcam is leading the way in addressing this with our range of recombinant monoclonal antibodies and knockout edited cell lines for gold-standard validation. Please check that this product meets your needs before purchasing.</p> <p>If you have any questions, special requirements or concerns, please send us an inquiry and/or contact our Support team ahead of purchase. Recommended alternatives for this product can be found below, along with publications, customer reviews and Q&amp;As</p>

### Properties

<b>Form</b>	Liquid
<b>Storage instructions</b>	Shipped at 4°C. Upon delivery aliquot and store at -20°C or -80°C. Avoid repeated freeze / thaw cycles.
<b>Storage buffer</b>	pH: 7.40 Constituent: 100% PBS
<b>Purity</b>	Protein G purified
<b>Clonality</b>	Polyclonal
<b>Isotype</b>	IgG

## Applications

### The Abpromise guarantee

Our **Abpromise guarantee** covers the use of ab67409 in the following tested applications.

The application notes include recommended starting dilutions; optimal dilutions/concentrations should be determined by the end user.

Application	Abreviews	Notes
WB		Use at an assay dependent dilution. Detects a band of approximately 35 kDa (predicted molecular weight: 31 kDa).

## Target

### Function

This is the non-catalytic component of the active enzyme, which catalyzes the hydrolysis of ATP coupled with the exchange of Na(+) and K(+) ions across the plasma membrane. The exact function of the beta-3 subunit is not known.

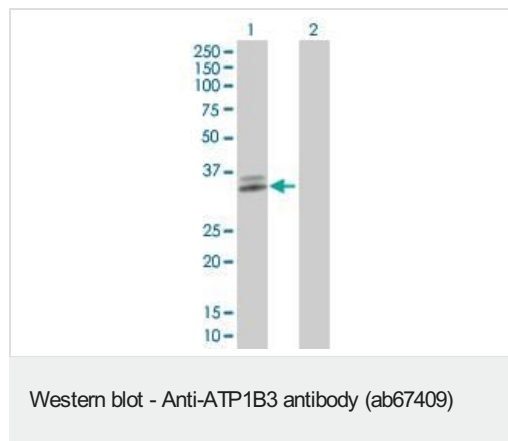
### Sequence similarities

Belongs to the X(+)/potassium ATPases subunit beta family.

### Cellular localization

Membrane. Melanosome. Identified by mass spectrometry in melanosome fractions from stage I to stage IV.

## Images



**All lanes :** Anti-ATP1B3 antibody (ab67409) at 1/500 dilution

**Lane 1 :** ATP1B3 293T transfected lysate

**Lane 2 :** Non transfected 293T lysate

Lysates/proteins at 25 µg per lane.

### Secondary

**All lanes :** Goat anti-mouse IgG (H&L)-HRP conjugate at 1/2500 dilution

**Predicted band size:** 31 kDa

**Observed band size:** 35 kDa

**Additional bands at:** 36 kDa. We are unsure as to the identity of these extra bands.

**Please note:** All products are "FOR RESEARCH USE ONLY. NOT FOR USE IN DIAGNOSTIC PROCEDURES"

## Our Abpromise to you: Quality guaranteed and expert technical support

- Replacement or refund for products not performing as stated on the datasheet
- Valid for 12 months from date of delivery

- Response to your inquiry within 24 hours
- We provide support in Chinese, English, French, German, Japanese and Spanish
- Extensive multi-media technical resources to help you
- We investigate all quality concerns to ensure our products perform to the highest standards

If the product does not perform as described on this datasheet, we will offer a refund or replacement. For full details of the Abpromise, please visit <https://www.abcam.com/abpromise> or contact our technical team.

#### **Terms and conditions**

---

- Guarantee only valid for products bought direct from Abcam or one of our authorized distributors