


Product datasheet

Anti-ATP5L2 + ATP5L antibody [EPR15636] ab191417

Recombinant RabMAb

[1 References](#) [5 Images](#)

Overview

Product name	Anti-ATP5L2 + ATP5L antibody [EPR15636]
Description	Rabbit monoclonal [EPR15636] to ATP5L2 + ATP5L
Host species	Rabbit
Tested applications	Suitable for: ICC/IF, IP, WB, IHC-P
Species reactivity	Reacts with: Human Predicted to work with: Mouse 
Immunogen	Recombinant fragment. This information is proprietary to Abcam and/or its suppliers.
Positive control	HeLa, Human fetal liver and Human pancreas lysates; Human kidney tissue; HeLa cells.
General notes	<p>This product is a recombinant monoclonal antibody, which offers several advantages including:</p> <ul style="list-style-type: none">- High batch-to-batch consistency and reproducibility- Improved sensitivity and specificity- Long-term security of supply- Animal-free production <p>For more information see here.</p> <p>Our RabMAb[®] technology is a patented hybridoma-based technology for making rabbit monoclonal antibodies. For details on our patents, please refer to RabMAb[®] patents.</p>

Properties

Form	Liquid
Storage instructions	Shipped at 4°C. Store at +4°C short term (1-2 weeks). Upon delivery aliquot. Store at -20°C long term. Avoid freeze / thaw cycle.
Storage buffer	pH: 7.2 Preservative: 0.01% Sodium azide Constituents: 59% PBS, 0.05% BSA, 40% Glycerol (glycerin, glycerine)
Purity	Protein A purified
Clonality	Monoclonal
Clone number	EPR15636
Isotype	IgG

Applications

The Abpromise guarantee Our **Abpromise guarantee** covers the use of ab191417 in the following tested applications.

The application notes include recommended starting dilutions; optimal dilutions/concentrations should be determined by the end user.

Application	Abreviews	Notes
ICC/IF		1/100.
IP		1/100.
WB		1/1000. Detects a band of approximately 11 kDa (predicted molecular weight: 11 kDa).
IHC-P		1/50 - 1/100. Perform heat mediated antigen retrieval with Tris/EDTA buffer pH 9.0 before commencing with IHC staining protocol.

Target

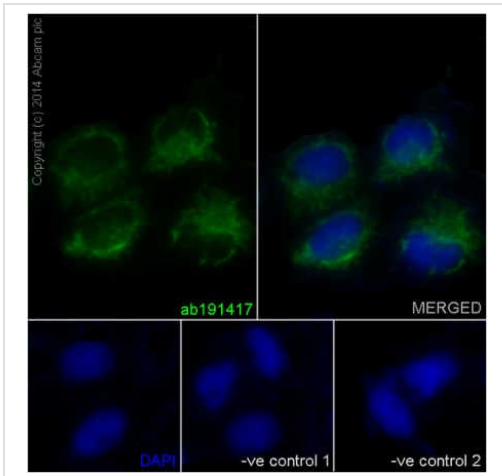
Relevance

Mitochondrial membrane ATP synthase (F1F0 ATP synthase or Complex V) produces ATP from ADP in the presence of a proton gradient across the membrane which is generated by electron transport complexes of the respiratory chain. F-type ATPases consist of two structural domains, F1 - containing the extramembraneous catalytic core, and F0 - containing the membrane proton channel, linked together by a central stalk and a peripheral stalk. During catalysis, ATP synthesis in the catalytic domain of F1 is coupled via a rotary mechanism of the central stalk subunits to proton translocation. Part of the complex F0 domain. Minor subunit located with subunit a in the membrane.

Cellular localization

Mitochondrial

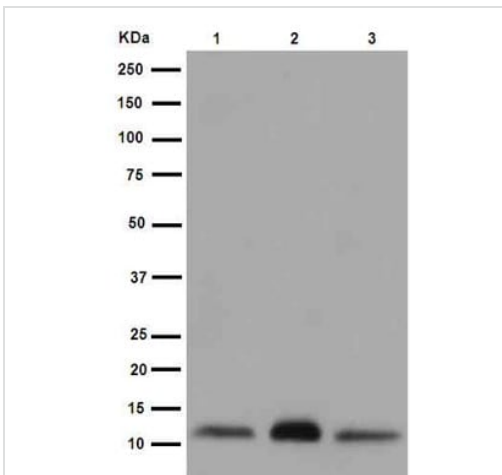
Images



Immunocytochemistry/ Immunofluorescence - Anti-ATP5L2 + ATP5L antibody [EPR15636] (ab191417)

Immunofluorescent analysis of HeLa cells (4% Paraformaldehyde-fixed, 0.1% tritonX-100 permeabilized) labeling ATP5L2 + ATP5L with ab191417 at 1/100 dilution (19µg/mL) followed by Goat anti rabbit IgG (AlexaFluor® 488) (**ab150077**) secondary at 1/200 dilution and counter-stained with DAPI (blue).

Negative controls: anti-ATP5L2 at 1/100 dilution, Secondary ab (Goat anti mouse IgG (Alexa Fluor®594)) at 1/400 dilution.



Western blot - Anti-ATP5L2 + ATP5L antibody [EPR15636] (ab191417)

All lanes : Anti-ATP5L2 + ATP5L antibody [EPR15636] (ab191417) at 1/1000 dilution

Lane 1 : HeLa cell lysate

Lane 2 : Human fetal liver tissue lysate

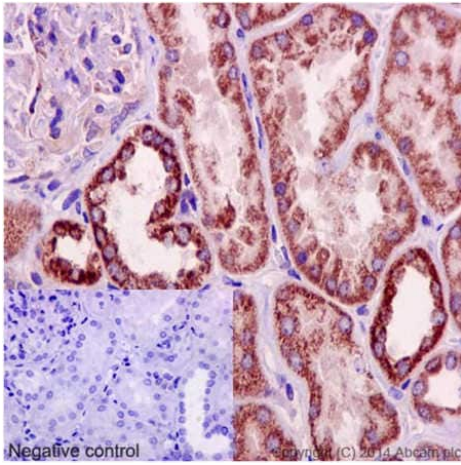
Lane 3 : Human pancreas tissue lysate

Lysates/proteins at 20 µg per lane.

Secondary

All lanes : Goat Anti-Rabbit IgG, (H+L), Peroxidase conjugated at 1/1000 dilution

Predicted band size: 11 kDa

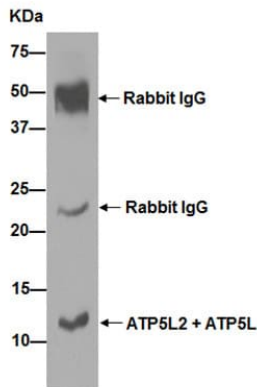


Immunohistochemical analysis of paraffin-embedded Human kidney tissue labeling ATP5L2 + ATP5L with ab191417 at 1/100 dilution (19.4 µg/ml) followed by pre-diluted HRP Polymer for Rabbit IgG secondary antibody and counter-stained with Hematoxylin.

Inset: Negative control: using PBS instead of primary antibody.

Perform heat mediated antigen retrieval with Tris/EDTA buffer pH 9.0 before commencing with IHC staining protocol.

Immunohistochemistry (Formalin/PFA-fixed paraffin-embedded sections) - Anti-ATP5L2 + ATP5L antibody [EPR15636] (ab191417)



Western blot analysis of immunoprecipitation pellet from Human fetal liver lysate immunoprecipitated using ab191417 at 1/100 dilution.

Secondary: Goat Anti-Rabbit IgG, (H+L), Peroxidase conjugate at 1/1000 dilution.

Immunoprecipitation - Anti-ATP5L2 + ATP5L antibody [EPR15636] (ab191417)

Why choose a recombinant antibody?



Research with confidence
Consistent and reproducible results



Long-term and scalable supply
Recombinant technology



Success from the first experiment
Confirmed specificity



Ethical standards compliant
Animal-free production

Anti-ATP5L2 + ATP5L antibody [EPR15636] (ab191417)

Please note: All products are "FOR RESEARCH USE ONLY. NOT FOR USE IN DIAGNOSTIC PROCEDURES"

Our Abpromise to you: Quality guaranteed and expert technical support

- Replacement or refund for products not performing as stated on the datasheet
- Valid for 12 months from date of delivery
- Response to your inquiry within 24 hours
- We provide support in Chinese, English, French, German, Japanese and Spanish
- Extensive multi-media technical resources to help you
- We investigate all quality concerns to ensure our products perform to the highest standards

If the product does not perform as described on this datasheet, we will offer a refund or replacement. For full details of the Abpromise, please visit <https://www.abcam.com/abpromise> or contact our technical team.

Terms and conditions

- Guarantee only valid for products bought direct from Abcam or one of our authorized distributors