

# Anti-ATP6AP1/ATP6S1 antibody ab175299

[2 References](#) [1 Image](#)

### Overview

<b>Product name</b>	Anti-ATP6AP1/ATP6S1 antibody
<b>Description</b>	Rabbit polyclonal to ATP6AP1/ATP6S1
<b>Host species</b>	Rabbit
<b>Tested applications</b>	<b>Suitable for:</b> WB
<b>Species reactivity</b>	<b>Reacts with:</b> Human
<b>Immunogen</b>	Recombinant full length protein corresponding to Human ATP6AP1/ATP6S1 aa 1-470.

Sequence:

```
MMAAMATARVRMGPRCAQALWRMPWLPVFLSLAAAAA  
AAAAEQQVPLVLW  
SSDRDLWAPAADTHEGHITSDLQLSTYLDPALELGPRNVL  
LFLQDKLSIE  
DFTAYGGVFGNKQDSAFSNLENALDLAPSSLVLPVAVD  
AVSTLTYYLQE  
KLGASPLHVDLTLRELKLNASLPALLLIRLPYTASSGLMA  
PREVLTGND  
EVIGQVLSTLKSIEDVPYTAALTAVRPSRVARDVAVVAGGL  
GRQLLQKQPV  
SPVIHPPVSYNDTAPRILFWAQNFSVAYKDQWEDLTPLTF  
GVQELNLTGS  
FWNDSFARLSLTYERLFGTTVTFKFIANRLYPVSARHWFT  
MERLEVHSN  
GSVAYFNASQVTGPSIYFHCYVSSLSKKGSLLVARTQP  
SPWQMMLQDF  
QIQAFNVMGEQFSYASDCASFFSPGWMGLLTSFLMFLIFT  
YGLHMILSL KTMDFDDHKGPTISLTQIV
```

Database link: [Q15904](#)

 [Run BLAST with](#)

 [Run BLAST with](#)

### General notes

The Life Science industry has been in the grips of a reproducibility crisis for a number of years. Abcam is leading the way in addressing this with our range of recombinant monoclonal antibodies and knockout edited cell lines for gold-standard validation. Please check that this product meets your needs before purchasing.

If you have any questions, special requirements or concerns, please send us an inquiry and/or contact our Support team ahead of purchase. Recommended alternatives for this product can be

found below, along with publications, customer reviews and Q&As

## Properties

---

<b>Form</b>	Liquid
<b>Storage instructions</b>	Shipped at 4°C. Store at +4°C short term (1-2 weeks). Upon delivery aliquot. Store at -20°C long term. Avoid freeze / thaw cycle.
<b>Storage buffer</b>	pH: 7.30 Preservative: 0.02% Sodium azide Constituents: 49% PBS, 50% Glycerol
<b>Purity</b>	Immunogen affinity purified
<b>Clonality</b>	Polyclonal
<b>Isotype</b>	IgG

## Applications

---

**The Abpromise guarantee** Our **Abpromise guarantee** covers the use of ab175299 in the following tested applications. The application notes include recommended starting dilutions; optimal dilutions/concentrations should be determined by the end user.

Application	Abreviews	Notes
WB		1/500 - 1/2000. Predicted molecular weight: 52 kDa.

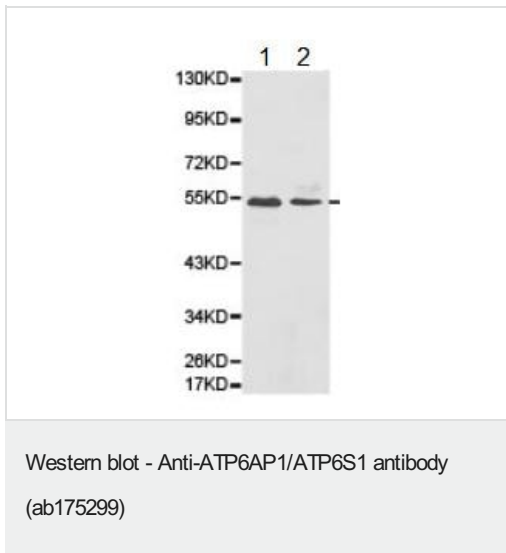
## Target

---

<b>Relevance</b>	ATP6AP1 is a component of vacuolar ATPase (V-ATPase), a multisubunit enzyme, which is responsible for acidifying a variety of intracellular compartments in eukaryotic cells. V-ATPase dependent organelle acidification is necessary for intracellular processes such as receptor-mediated endocytosis, protein sorting and zymogen activation.
<b>Cellular localization</b>	Vacuole membrane. Single-pass membrane protein.

## Images

---



**All lanes :** Anti-ATP6AP1/ATP6S1 antibody (ab175299) at 1/500 dilution

**Lane 1 :** HeLa cell lysate

**Lane 2 :** HepG2 cell lysate

**Predicted band size:** 52 kDa

**Please note:** All products are "FOR RESEARCH USE ONLY. NOT FOR USE IN DIAGNOSTIC PROCEDURES"

### Our Abpromise to you: Quality guaranteed and expert technical support

---

- Replacement or refund for products not performing as stated on the datasheet
- Valid for 12 months from date of delivery
- Response to your inquiry within 24 hours
- We provide support in Chinese, English, French, German, Japanese and Spanish
- Extensive multi-media technical resources to help you
- We investigate all quality concerns to ensure our products perform to the highest standards

If the product does not perform as described on this datasheet, we will offer a refund or replacement. For full details of the Abpromise, please visit <https://www.abcam.com/abpromise> or contact our technical team.

### Terms and conditions

---

- Guarantee only valid for products bought direct from Abcam or one of our authorized distributors