

## Product datasheet

# Anti-ATP6V1B1 + ATP6V1B2 antibody [EPR16401] ab200839

Recombinant RabMAb

[9 References](#) [10 Images](#)

### Overview

<b>Product name</b>	Anti-ATP6V1B1 + ATP6V1B2 antibody [EPR16401]
<b>Description</b>	Rabbit monoclonal [EPR16401] to ATP6V1B1 + ATP6V1B2
<b>Host species</b>	Rabbit
<b>Tested applications</b>	<b>Suitable for:</b> WB, IHC-P, ICC/IF
<b>Species reactivity</b>	<b>Reacts with:</b> Mouse, Rat, Human
<b>Immunogen</b>	Synthetic peptide. This information is proprietary to Abcam and/or its suppliers.
<b>Positive control</b>	WB: JAR and RAW 264.7 cell lysates; Mouse brain, mouse kidney and rat kidney tissue lysates. IHC-P: Human, mouse and rat kidney tissues. ICC/IF: HEK293 and JAR cells.
<b>General notes</b>	<p>This product is a recombinant monoclonal antibody, which offers several advantages including:</p> <ul style="list-style-type: none"> <li>- High batch-to-batch consistency and reproducibility</li> <li>- Improved sensitivity and specificity</li> <li>- Long-term security of supply</li> <li>- Animal-free production</li> </ul> <p>For more information <a href="#">see here</a>.</p> <p>Our RabMAb<sup>®</sup> technology is a patented hybridoma-based technology for making rabbit monoclonal antibodies. For details on our patents, please refer to <a href="#">RabMAb<sup>®</sup> patents</a>.</p>

### Properties

<b>Form</b>	Liquid
<b>Storage instructions</b>	Shipped at 4°C. Store at +4°C short term (1-2 weeks). Upon delivery aliquot. Store at -20°C long term. Avoid freeze / thaw cycle.
<b>Storage buffer</b>	pH: 7.2 Preservative: 0.01% Sodium azide Constituents: 59% PBS, 40% Glycerol, 0.05% BSA
<b>Purity</b>	Protein A purified
<b>Clonality</b>	Monoclonal
<b>Clone number</b>	EPR16401

## Applications

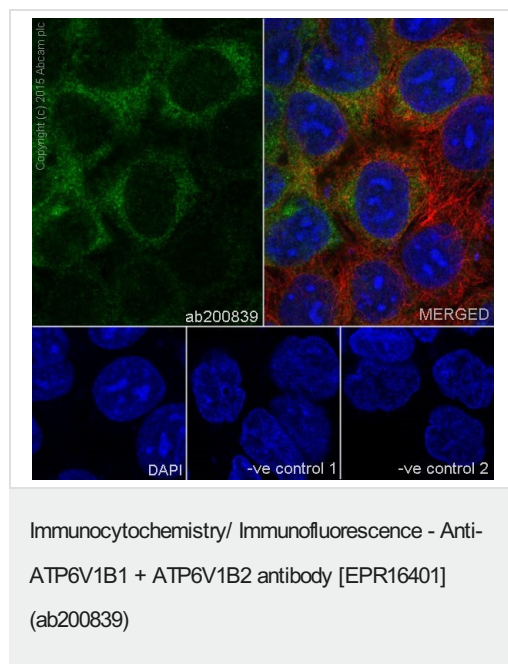
### The Abpromise guarantee

Our **Abpromise guarantee** covers the use of ab200839 in the following tested applications.

The application notes include recommended starting dilutions; optimal dilutions/concentrations should be determined by the end user.

Application	Abreviews	Notes
WB		1/1000. Detects a band of approximately 57 kDa (predicted molecular weight: 57 kDa).
IHC-P		1/2500. Perform heat mediated antigen retrieval with Tris/EDTA buffer pH 9.0 before commencing with IHC staining protocol.
ICC/IF		1/250.

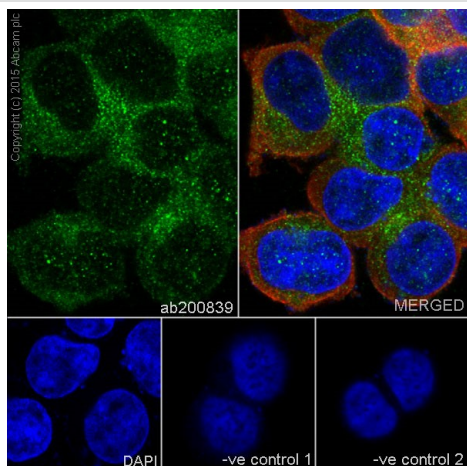
## Images



Immunofluorescent analysis of 100% methanol-fixed, 0.1% Triton X-100 permeabilized JAR (Human placenta choriocarcinoma cell line) cells labeling ATP6V1B1 + ATP6V1B2 with ab200839 at 1/250 dilution, followed by Goat anti-rabbit IgG (Alexa Fluor® 488) (**ab150077**) secondary antibody at 1/500 dilution (green). Cytoplasmic staining on JAR cell line was observed. The nuclear counter stain is DAPI (blue). Tubulin is detected with **ab7291** (anti-Tubulin mouse mAb) at 1/1000 dilution and **ab150120** (AlexaFluor®594 Goat anti-Mouse secondary) at 1/500 dilution (red).

The negative controls are as follows:

-ve control 1: ab200839 at 1/250 dilution followed by **ab150120** (AlexaFluor®594 Goat anti-Mouse secondary) at 1/500 dilution.  
 -ve control 2: **ab7291** (anti-Tubulin mouse mAb) at 1/1000 dilution followed by **ab150077** (Alexa Fluor®488 Goat Anti-Rabbit IgG H&L) at 1/500 dilution.



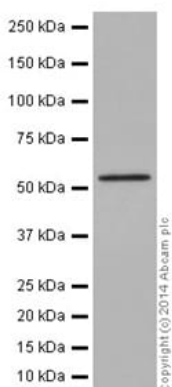
Immunocytochemistry/ Immunofluorescence - Anti-ATP6V1B1 + ATP6V1B2 antibody [EPR16401] (ab200839)

Immunofluorescent analysis of 100% methanol-fixed, 0.1% Triton X-100 permeabilized HEK293 (Human embryonic kidney) cells labeling ATP6V1B1 + ATP6V1B2 with ab200839 at 1/250 dilution, followed by Goat anti-rabbit IgG (Alexa Fluor® 488) ([ab150077](#)) secondary antibody at 1/500 dilution (green). Cytoplasmic staining on HEK293 cell line was observed. The nuclear counter stain is DAPI (blue). Tubulin is detected with [ab7291](#) (anti-Tubulin mouse mAb) at 1/1000 dilution and [ab150120](#) (AlexaFluor®594 Goat anti-Mouse secondary) at 1/500 dilution (red).

The negative controls are as follows:

-ve control 1: ab200839 at 1/250 dilution followed by [ab150120](#) (AlexaFluor®594 Goat anti-Mouse secondary) at 1/500 dilution.

-ve control 2: [ab7291](#) (anti-Tubulin mouse mAb) at 1/1000 dilution followed by [ab150077](#) (Alexa Fluor®488 Goat Anti-Rabbit IgG H&L) at 1/500 dilution.



Western blot - Anti-ATP6V1B1 + ATP6V1B2 antibody [EPR16401] (ab200839)

Anti-ATP6V1B1 + ATP6V1B2 antibody [EPR16401] (ab200839) at 1/5000 dilution + JAR (Human placenta choriocarcinoma cell line) cell lysate at 10 µg

### Secondary

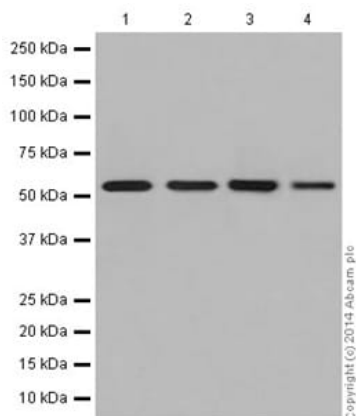
Goat Anti-Rabbit IgG, (H+L), Peroxidase conjugated at 1/1000 dilution

**Predicted band size:** 57 kDa

**Observed band size:** 57 kDa

**Exposure time:** 3 minutes

Blocking/Dilution buffer: 5% NFDM/TBST.



Western blot - Anti-ATP6V1B1 + ATP6V1B2 antibody [EPR16401] (ab200839)

**All lanes :** Anti-ATP6V1B1 + ATP6V1B2 antibody [EPR16401] (ab200839) at 1/1000 dilution

**Lane 1 :** Mouse brain lysate

**Lane 2 :** Mouse kidney lysate

**Lane 3 :** Rat kidney lysate

**Lane 4 :** RAW 264.7 (Mouse macrophage cells transformed with Abelson murine leukemia virus) cell lysate

Lysates/proteins at 10 µg per lane.

### Secondary

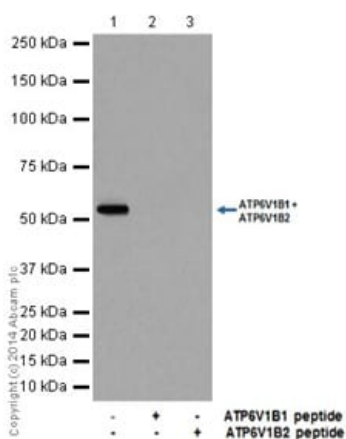
**All lanes :** Goat Anti-Rabbit IgG, (H+L), Peroxidase conjugated at 1/1000 dilution

**Predicted band size:** 57 kDa

**Observed band size:** 57 kDa

**Exposure time:** 3 minutes

Blocking/Dilution buffer: 5% NFDM/TBST.



Western blot - Anti-ATP6V1B1 + ATP6V1B2 antibody [EPR16401] (ab200839)

**All lanes :** Anti-ATP6V1B1 + ATP6V1B2 antibody [EPR16401] (ab200839) at 1/1000 dilution

**Lane 1 :** JAR (Human placenta choriocarcinoma cell line) cell lysate

**Lane 2 :** JAR (Human placenta choriocarcinoma cell line) cell lysate with immunizing peptide

**Lane 3 :** JAR (Human placenta choriocarcinoma cell line) cell lysate with ATP6V1B2 peptide

Lysates/proteins at 10 µg per lane.

### Secondary

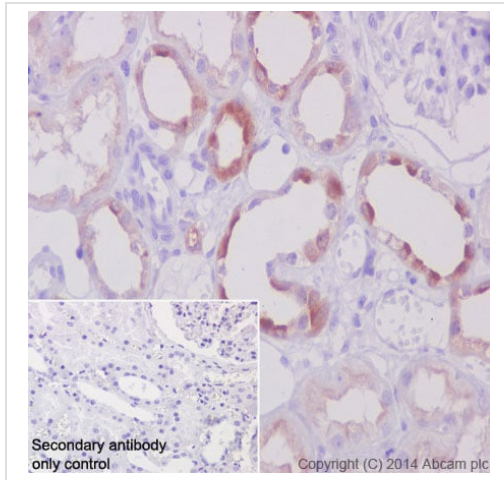
**All lanes :** Goat Anti-Rabbit IgG, (H+L), Peroxidase conjugated at 1/1000 dilution

**Predicted band size:** 57 kDa

**Observed band size:** 57 kDa

**Exposure time:** 3 minutes

Blocking/Dilution buffer: 5% NFDM/TBST.

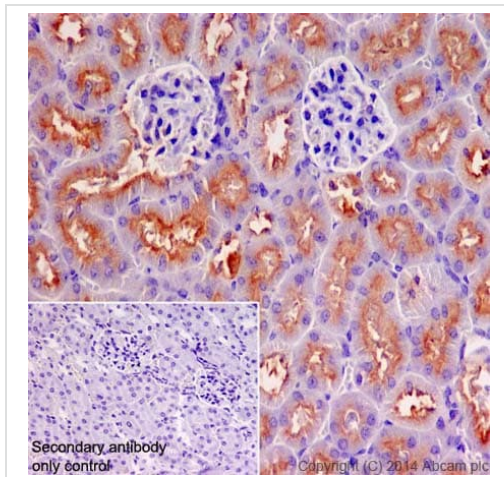


Immunohistochemistry (Formalin/PFA-fixed paraffin-embedded sections) - Anti-ATP6V1B1 + ATP6V1B2 antibody [EPR16401] (ab200839)

Immunohistochemical analysis of paraffin-embedded Human kidney tissue labeling ATP6V1B1 + ATP6V1B2 with ab200839 at 1/5000 dilution, followed by Goat Anti-Rabbit IgG H&L (HRP) ([ab97051](#)) secondary antibody at 1/500 dilution. Cytoplasmic staining on Human kidney tissue is observed. Counter stained with Hematoxylin.

Secondary antibody only control: Used PBS instead of primary antibody, secondary antibody is Goat Anti-Rabbit IgG H&L (HRP) ([ab97051](#)) at 1/500 dilution.

Perform heat mediated antigen retrieval with Tris/EDTA buffer pH 9.0 before commencing with IHC staining protocol.



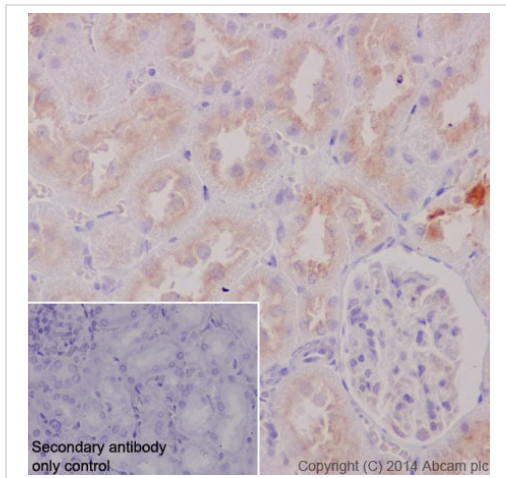
Immunohistochemistry (Formalin/PFA-fixed paraffin-embedded sections) - Anti-ATP6V1B1 + ATP6V1B2 antibody [EPR16401] (ab200839)

Immunohistochemical analysis of paraffin-embedded Mouse kidney tissue labeling ATP6V1B1 + ATP6V1B2 with ab200839 at 1/5000 dilution, followed by Goat Anti-Rabbit IgG H&L (HRP) ([ab97051](#)) secondary antibody at 1/500 dilution. Cytoplasmic staining on mouse kidney tissue is observed. Counter stained with Hematoxylin.

Secondary antibody only control: Used PBS instead of primary antibody, secondary antibody is Goat Anti-Rabbit IgG H&L (HRP) ([ab97051](#)) at 1/500 dilution.

Perform heat mediated antigen retrieval with Tris/EDTA buffer pH 9.0 before commencing with IHC staining protocol.



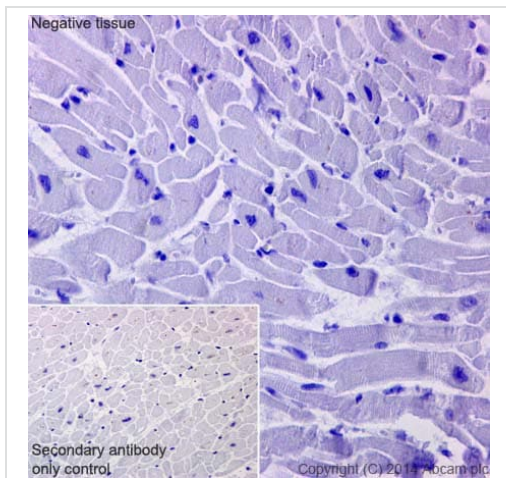


Immunohistochemistry (Formalin/PFA-fixed paraffin-embedded sections) - Anti-ATP6V1B1 + ATP6V1B2 antibody [EPR16401] (ab200839)

Immunohistochemical analysis of paraffin-embedded Rat kidney tissue labeling ATP6V1B1 + ATP6V1B2 with ab200839 at 1/5000 dilution, followed by Goat Anti-Rabbit IgG H&L (HRP) ([ab97051](#)) secondary antibody at 1/500 dilution. Cytoplasmic staining on rat kidney tissue is observed. Counter stained with Hematoxylin.

Secondary antibody only control: Used PBS instead of primary antibody, secondary antibody is Goat Anti-Rabbit IgG H&L (HRP) ([ab97051](#)) at 1/500 dilution.

Perform heat mediated antigen retrieval with Tris/EDTA buffer pH 9.0 before commencing with IHC staining protocol.



Immunohistochemistry (Formalin/PFA-fixed paraffin-embedded sections) - Anti-ATP6V1B1 + ATP6V1B2 antibody [EPR16401] (ab200839)

Immunohistochemical analysis of paraffin-embedded Human cardiac muscle tissue labeling ATP6V1B1 + ATP6V1B2 with ab200839 at 1/5000 dilution, followed by Goat Anti-Rabbit IgG H&L (HRP) ([ab97051](#)) secondary antibody at 1/500 dilution. Human cardiac muscle tissue represents a negative control for ATP6V1B1 + ATP6V1B2. Counter stained with Hematoxylin.

Secondary antibody only control: Used PBS instead of primary antibody, secondary antibody is Goat Anti-Rabbit IgG H&L (HRP) ([ab97051](#)) at 1/500 dilution.

Perform heat mediated antigen retrieval with Tris/EDTA buffer pH 9.0 before commencing with IHC staining protocol.

### Why choose a recombinant antibody?



**Research with confidence**  
Consistent and reproducible results



**Long-term and scalable supply**  
Recombinant technology



**Success from the first experiment**  
Confirmed specificity



**Ethical standards compliant**  
Animal-free production

Anti-ATP6V1B1 + ATP6V1B2 antibody [EPR16401]  
(ab200839)

**Please note:** All products are "FOR RESEARCH USE ONLY. NOT FOR USE IN DIAGNOSTIC PROCEDURES"

### Our Abpromise to you: Quality guaranteed and expert technical support

---

- Replacement or refund for products not performing as stated on the datasheet
- Valid for 12 months from date of delivery
- Response to your inquiry within 24 hours
- We provide support in Chinese, English, French, German, Japanese and Spanish
- Extensive multi-media technical resources to help you
- We investigate all quality concerns to ensure our products perform to the highest standards

If the product does not perform as described on this datasheet, we will offer a refund or replacement. For full details of the Abpromise, please visit <https://www.abcam.com/abpromise> or contact our technical team.

### Terms and conditions

---

- Guarantee only valid for products bought direct from Abcam or one of our authorized distributors