

## Product datasheet

### Anti-ATP6V1B1 antibody [EPR16400] ab192612

Recombinant **RabMAb**

[4 References](#) [7 Images](#)

#### Overview

<b>Product name</b>	Anti-ATP6V1B1 antibody [EPR16400]
<b>Description</b>	Rabbit monoclonal [EPR16400] to ATP6V1B1
<b>Host species</b>	Rabbit
<b>Tested applications</b>	<b>Suitable for:</b> WB, IHC-P
<b>Species reactivity</b>	<b>Reacts with:</b> Mouse, Rat, Human
<b>Immunogen</b>	Synthetic peptide. This information is proprietary to Abcam and/or its suppliers.
<b>Positive control</b>	JAR, Human fetal kidney, Mouse kidney and spleen, Rat kidney lysates; Human, Mouse and Rat kidney tissues.
<b>General notes</b>	<p>This product is a recombinant monoclonal antibody, which offers several advantages including:</p> <ul style="list-style-type: none"> <li>- High batch-to-batch consistency and reproducibility</li> <li>- Improved sensitivity and specificity</li> <li>- Long-term security of supply</li> <li>- Animal-free production</li> </ul> <p>For more information <a href="#">see here</a>.</p> <p>Our RabMAb<sup>®</sup> technology is a patented hybridoma-based technology for making rabbit monoclonal antibodies. For details on our patents, please refer to <a href="#">RabMAb<sup>®</sup> patents</a>.</p>

#### Properties

<b>Form</b>	Liquid
<b>Storage instructions</b>	Shipped at 4°C. Store at +4°C short term (1-2 weeks). Upon delivery aliquot. Store at -20°C long term. Avoid freeze / thaw cycle.
<b>Storage buffer</b>	<p>pH: 7.2</p> <p>Preservative: 0.01% Sodium azide</p> <p>Constituents: 40% Glycerol (glycerin, glycerine), 59% PBS, 0.05% BSA</p>
<b>Purity</b>	Protein A purified
<b>Clonality</b>	Monoclonal
<b>Clone number</b>	EPR16400
<b>Isotype</b>	IgG

## Applications

### The Abpromise guarantee

Our **Abpromise guarantee** covers the use of ab192612 in the following tested applications.

The application notes include recommended starting dilutions; optimal dilutions/concentrations should be determined by the end user.

Application	Abreviews	Notes
WB		1/1000 - 1/10000. Detects a band of approximately 57 kDa (predicted molecular weight: 57 kDa).
IHC-P		1/250 - 1/500. Perform heat mediated antigen retrieval with Tris/EDTA buffer pH 9.0 before commencing with IHC staining protocol.

## Target

### Function

Non-catalytic subunit of the peripheral V1 complex of vacuolar ATPase. V-ATPase is responsible for acidifying a variety of intracellular compartments in eukaryotic cells.

### Tissue specificity

Expressed in the cochlea and endolymphatic sac.

### Involvement in disease

Defects in ATP6V1B1 are the cause of distal renal tubular acidosis with deafness (dRTA-D) [MIM:267300]. Inheritance is autosomal recessive. Patients with recessive dRTA are severely affected, presenting with either acute illness or growth failure at a young age, and bilateral sensorineural deafness. Other features include low serum K(+) due to renal potassium wasting, and elevated urinary calcium. If untreated, this acidosis may result in dissolution of bone, leading to osteomalacia and rickets. Renal deposition of calcium salts (nephrocalcinosis) and renal stone formation commonly occur.

### Sequence similarities

Belongs to the ATPase alpha/beta chains family.

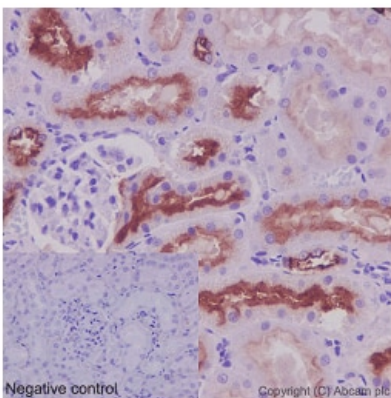
### Domain

The PDZ-binding motif mediates interactions with SLC9A3R1 and SCL4A7.

### Cellular localization

Endomembrane system. Endomembrane.

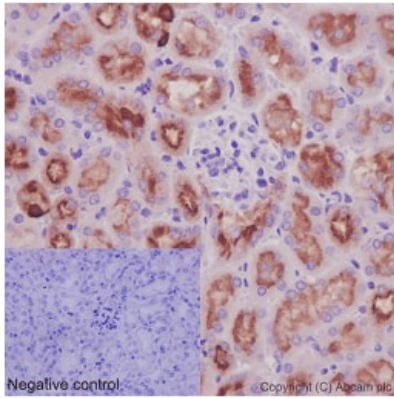
## Images



Immunohistochemical analysis of paraffin-embedded Rat kidney tissue labeling ATP6V1B1 with ab192612 at 1/500 dilution (1.4 µg/ml) followed by pre-diluted HRP Polymer for Rabbit/Mouse IgG secondary antibody and counter-stained with Hematoxylin. (inset: negative control).

Perform heat mediated antigen retrieval with Tris/EDTA buffer pH 9.0 before commencing with IHC staining protocol.

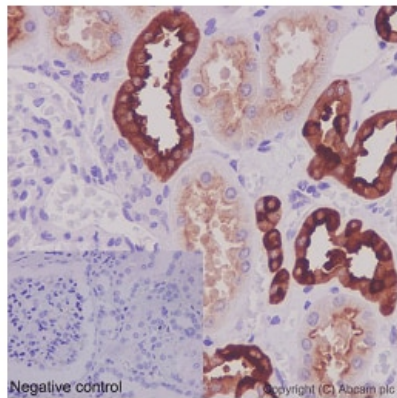
Immunohistochemistry (Formalin/PFA-fixed paraffin-embedded sections) - Anti-ATP6V1B1 antibody [EPR16400] (ab192612)



Immunohistochemistry (Formalin/PFA-fixed paraffin-embedded sections) - Anti-ATP6V1B1 antibody [EPR16400] (ab192612)

Immunohistochemical analysis of paraffin-embedded Mouse kidney tissue labeling ATP6V1B1 with ab192612 at 1/500 dilution (1.4 µg/ml) followed by pre-diluted HRP Polymer for Rabbit/Mouse IgG secondary antibody and counter-stained with Hematoxylin. (inset: negative control).

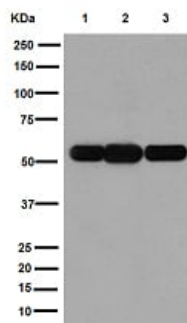
Perform heat mediated antigen retrieval with Tris/EDTA buffer pH 9.0 before commencing with IHC staining protocol.



Immunohistochemistry (Formalin/PFA-fixed paraffin-embedded sections) - Anti-ATP6V1B1 antibody [EPR16400] (ab192612)

Immunohistochemical analysis of paraffin-embedded Human kidney tissue labeling ATP6V1B1 with ab192612 at 1/500 dilution (1.4 µg/ml) followed by pre-diluted HRP Polymer for Rabbit/Mouse IgG secondary antibody and counter-stained with Hematoxylin. (inset: negative control).

Perform heat mediated antigen retrieval with Tris/EDTA buffer pH 9.0 before commencing with IHC staining protocol.



Western blot - Anti-ATP6V1B1 antibody [EPR16400] (ab192612)

**All lanes** : Anti-ATP6V1B1 antibody [EPR16400] (ab192612) at 1/1000 dilution

**Lane 1** : Mouse kidney tissue lysate

**Lane 2** : Mouse spleen tissue lysate

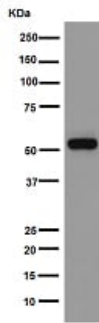
**Lane 3** : Rat kidney tissue lysate

Lysates/proteins at 10 µg per lane.

### Secondary

**All lanes** : Goat Anti-Rabbit IgG, (H+L), Peroxidase conjugate at 1/1000 dilution

**Predicted band size:** 57 kDa



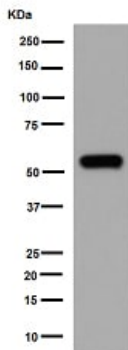
Western blot - Anti-ATP6V1B1 antibody [EPR16400]  
(ab192612)

Anti-ATP6V1B1 antibody [EPR16400] (ab192612) at 1/1000  
dilution + JAR cell lysate at 20 µg

#### Secondary

Goat Anti-Rabbit IgG, (H+L), Peroxidase conjugate at 1/1000  
dilution

**Predicted band size:** 57 kDa



Western blot - Anti-ATP6V1B1 antibody [EPR16400]  
(ab192612)

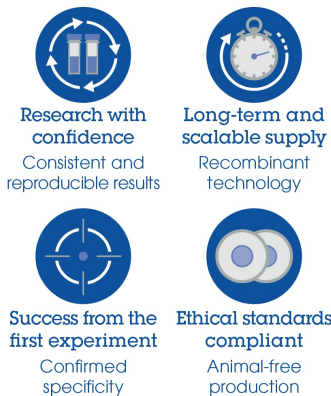
Anti-ATP6V1B1 antibody [EPR16400] (ab192612) at 1/10000  
dilution + Human fetal kidney lysate at 20 µg

#### Secondary

Goat Anti-Rabbit IgG, (H+L), Peroxidase conjugate at 1/1000  
dilution

**Predicted band size:** 57 kDa

Why choose a  
recombinant antibody?



Anti-ATP6V1B1 antibody [EPR16400] (ab192612)

**Please note:** All products are "FOR RESEARCH USE ONLY. NOT FOR USE IN DIAGNOSTIC PROCEDURES"

## **Our Abpromise to you: Quality guaranteed and expert technical support**

---

- Replacement or refund for products not performing as stated on the datasheet
- Valid for 12 months from date of delivery
- Response to your inquiry within 24 hours
- We provide support in Chinese, English, French, German, Japanese and Spanish
- Extensive multi-media technical resources to help you
- We investigate all quality concerns to ensure our products perform to the highest standards

If the product does not perform as described on this datasheet, we will offer a refund or replacement. For full details of the Abpromise, please visit [\*\*https://www.abcam.com/abpromise\*\*](https://www.abcam.com/abpromise) or contact our technical team.

## **Terms and conditions**

---

- Guarantee only valid for products bought direct from Abcam or one of our authorized distributors