




Product datasheet

Anti-ATP6V1C2 antibody ab176771

2 Images

Overview

Product name	Anti-ATP6V1C2 antibody
Description	Rabbit polyclonal to ATP6V1C2
Host species	Rabbit
Tested applications	Suitable for: WB, IHC-P
Species reactivity	Reacts with: Mouse, Human Predicted to work with: Rat 
Immunogen	Recombinant fragment corresponding to Human ATP6V1C2 aa 2-195. (BC012142). Sequence: SEFWLISAPGDKENLQALERMNTVTSKSNLSYNTKFAIPD FKVGTLDLSDLV GLSDELGKLDTFAESLIRRMAQSVVEVMEDSKGKVEHL LANGVDLTSFV THFEWDMAKYPVKQPLVSVVDIAKQLAQIEMDLKSRTAA YNTLKTNLN LEKKSMDGNLFFRRLSDIVSKEDFVLDSEYLVTLVMPKPN YSQ Database link: Q8NEY4-2  Run BLAST with  Run BLAST with
Positive control	Human fetal kidney and mouse kidney lysates.
General notes	<p>The Life Science industry has been in the grips of a reproducibility crisis for a number of years. Abcam is leading the way in addressing this with our range of recombinant monoclonal antibodies and knockout edited cell lines for gold-standard validation. Please check that this product meets your needs before purchasing.</p> <p>If you have any questions, special requirements or concerns, please send us an inquiry and/or contact our Support team ahead of purchase. Recommended alternatives for this product can be found below, along with publications, customer reviews and Q&As</p>

Properties

Form	Lyophilized:Reconstitute in 200ul Sterile Distilled Water.
Storage instructions	Shipped at 4°C. Store at +4°C short term (1-2 weeks). Upon delivery aliquot. Store at -20°C long

term. Avoid freeze / thaw cycle.

Storage buffer

pH: 7.20
Preservative: 0.02% Sodium azide
Constituents: 98% PBS, 1% BSA

Purity

Immunogen affinity purified

Clonality

Polyclonal

Isotype

IgG

Applications

The Abpromise guarantee

Our **Abpromise guarantee** covers the use of ab176771 in the following tested applications.

The application notes include recommended starting dilutions; optimal dilutions/concentrations should be determined by the end user.

Application	Abreviews	Notes
WB		1/200 - 1/1000. Predicted molecular weight: 44, 49 kDa.
IHC-P		1/100 - 1/500.

Target

Function

Subunit of the peripheral V1 complex of vacuolar ATPase. Subunit C is necessary for the assembly of the catalytic sector of the enzyme and is likely to have a specific function in its catalytic activity. V-ATPase is responsible for acidifying a variety of intracellular compartments in eukaryotic cells.

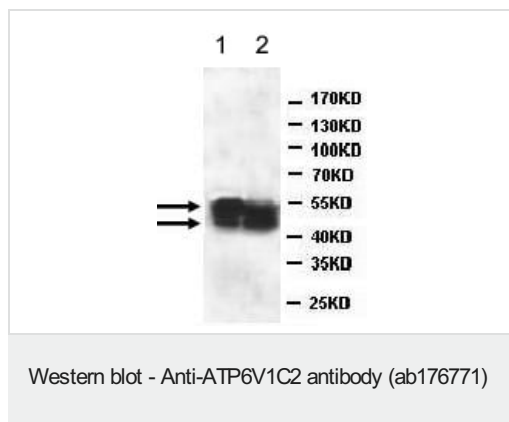
Tissue specificity

Kidney and placenta.

Sequence similarities

Belongs to the V-ATPase C subunit family.

Images

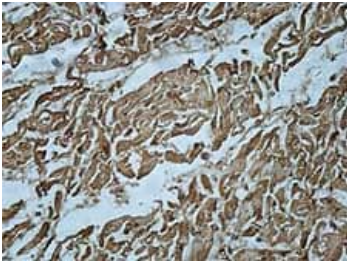


All lanes : Anti-ATP6V1C2 antibody (ab176771) at 1/500 dilution

Lane 1 : Human fetal kidney lysate

Lane 2 : Mouse kidney lysate

Predicted band size: 44, 49 kDa



Immunohistochemical analysis of formalin-fixed, paraffin-embedded Human fetal heart tissue labeling ATP6V1C2 with ab176771 at 1/100 dilution.

Immunohistochemistry (Formalin/PFA-fixed paraffin-embedded sections) - Anti-ATP6V1C2 antibody (ab176771)

Please note: All products are "FOR RESEARCH USE ONLY. NOT FOR USE IN DIAGNOSTIC PROCEDURES"

Our Abpromise to you: Quality guaranteed and expert technical support

- Replacement or refund for products not performing as stated on the datasheet
- Valid for 12 months from date of delivery
- Response to your inquiry within 24 hours
- We provide support in Chinese, English, French, German, Japanese and Spanish
- Extensive multi-media technical resources to help you
- We investigate all quality concerns to ensure our products perform to the highest standards

If the product does not perform as described on this datasheet, we will offer a refund or replacement. For full details of the Abpromise, please visit <https://www.abcam.com/abpromise> or contact our technical team.

Terms and conditions

- Guarantee only valid for products bought direct from Abcam or one of our authorized distributors