


Product datasheet

Anti-ATP6V1E1 antibody ab111733

[6 References](#) [3 Images](#)

Overview

Product name	Anti-ATP6V1E1 antibody
Description	Rabbit polyclonal to ATP6V1E1
Host species	Rabbit
Tested applications	Suitable for: WB, ICC/IF
Species reactivity	Reacts with: Mouse, Human Predicted to work with: Rat, Cow 
Immunogen	Recombinant fragment within Human ATP6V1E1 aa 1-200. The exact immunogen sequence used to generate this antibody is proprietary information. If additional detail on the immunogen is needed to determine the suitability of the antibody for your needs, please contact our Scientific Support team to discuss your requirements. Database link: P36543
Positive control	A549 and Mouse brain whole cell lysates; HeLa cells
General notes	<p>The Life Science industry has been in the grips of a reproducibility crisis for a number of years. Abcam is leading the way in addressing this with our range of recombinant monoclonal antibodies and knockout edited cell lines for gold-standard validation. Please check that this product meets your needs before purchasing.</p> <p>If you have any questions, special requirements or concerns, please send us an inquiry and/or contact our Support team ahead of purchase. Recommended alternatives for this product can be found below, along with publications, customer reviews and Q&As</p>

Properties

Form	Liquid
Storage instructions	Shipped at 4°C. Upon delivery aliquot and store at -20°C or -80°C. Avoid repeated freeze / thaw cycles.
Storage buffer	pH: 7.00 Preservative: 0.025% Proclin 300 Constituents: 79% PBS, 20% Glycerol (glycerin, glycerine)
Purity	Immunogen affinity purified
Clonality	Polyclonal
Isotype	IgG

Applications

The Abpromise guarantee Our **Abpromise guarantee** covers the use of ab111733 in the following tested applications. The application notes include recommended starting dilutions; optimal dilutions/concentrations should be determined by the end user.

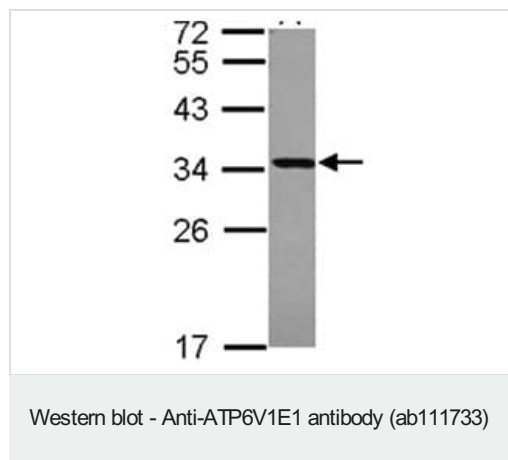
Application	Abreviews	Notes
WB		1/500 - 1/3000. Predicted molecular weight: 26 kDa.
ICC/IF		1/100 - 1/500.

Target

Relevance Function: Subunit of the peripheral V1 complex of vacuolar ATPase essential for assembly or catalytic function. V-ATPase is responsible for acidifying a variety of intracellular compartments in eukaryotic cells. Tissue specificity: Ubiquitous. Similarity: Belongs to the V-ATPase E subunit family.

Cellular localization Plasma membrane

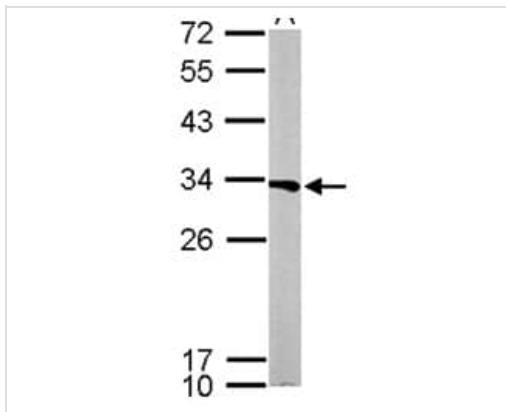
Images



Anti-ATP6V1E1 antibody (ab111733) at 1/3000 dilution + A549 whole cell lysate at 30 μ g

Predicted band size: 26 kDa

12% SDS PAGE

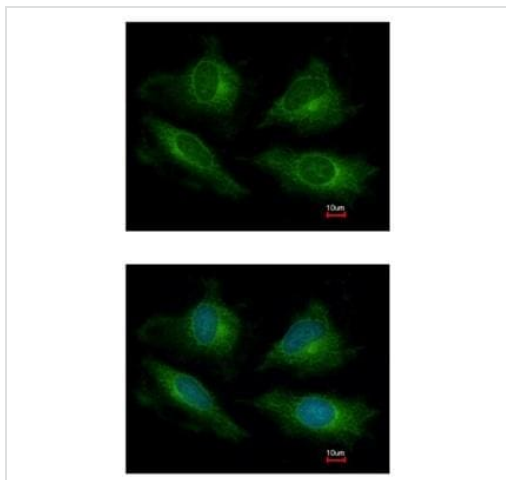


Western blot - Anti-ATP6V1E1 antibody (ab111733)

Anti-ATP6V1E1 antibody (ab111733) at 1/1000 dilution + Mouse brain whole cell lysate at 20 µg

Predicted band size: 26 kDa

12% SDS PAGE



Immunocytochemistry/ Immunofluorescence - Anti-ATP6V1E1 antibody (ab111733)

Immunofluorescence analysis of ATP6V1E1 in methanol-fixed HeLa cells, using ab111733 at a 1/200 dilution. Lower image shows the cells counter stained with Hoechst 33342.

Please note: All products are "FOR RESEARCH USE ONLY. NOT FOR USE IN DIAGNOSTIC PROCEDURES"

Our Abpromise to you: Quality guaranteed and expert technical support

- Replacement or refund for products not performing as stated on the datasheet
- Valid for 12 months from date of delivery
- Response to your inquiry within 24 hours
- We provide support in Chinese, English, French, German, Japanese and Spanish
- Extensive multi-media technical resources to help you
- We investigate all quality concerns to ensure our products perform to the highest standards

If the product does not perform as described on this datasheet, we will offer a refund or replacement. For full details of the Abpromise, please visit <https://www.abcam.com/abpromise> or contact our technical team.

Terms and conditions

- Guarantee only valid for products bought direct from Abcam or one of our authorized distributors