





Product datasheet

Anti-ATP6V1G3 antibody ab122012

[1 References](#) [2 Images](#)

Overview

Product name	Anti-ATP6V1G3 antibody
Description	Rabbit polyclonal to ATP6V1G3
Host species	Rabbit
Tested applications	Suitable for: WB, IHC-P
Species reactivity	Reacts with: Human
Immunogen	amino acids 36-115 (AKEEAMVEID QYRMQRDKEF RLKQSKIMGS QNNLSDEIEE QTLGKIQELN GHYNKYMESV MNQLLSMVCD MKPEIHVNYR) of Human ATP6V1G3 (Q96LB4).  Run BLAST with   Run BLAST with 
Positive control	WB: RT-4, U-251 MG, Human liver and tonsil lysate. IHC-P: Human kidney tissue.
General notes	<p>The Life Science industry has been in the grips of a reproducibility crisis for a number of years. Abcam is leading the way in addressing this with our range of recombinant monoclonal antibodies and knockout edited cell lines for gold-standard validation. Please check that this product meets your needs before purchasing.</p> <p>If you have any questions, special requirements or concerns, please send us an inquiry and/or contact our Support team ahead of purchase. Recommended alternatives for this product can be found below, along with publications, customer reviews and Q&As</p>

Properties

Form	Liquid
Storage instructions	Shipped at 4°C. Upon delivery aliquot and store at -20°C. Avoid freeze / thaw cycles.
Storage buffer	pH: 7.20 Preservative: 0.02% Sodium azide Constituents: 40% Glycerol (glycerin, glycerine), 59% PBS
Purity	Immunogen affinity purified
Clonality	Polyclonal
Isotype	IgG

Applications

The Abpromise guarantee

Our **Abpromise guarantee** covers the use of ab122012 in the following tested applications.

The application notes include recommended starting dilutions; optimal dilutions/concentrations should be determined by the end user.

Application	Abreviews	Notes
WB		1/250 - 1/500.
IHC-P		1/5000 - 1/1000. Perform heat mediated antigen retrieval with citrate buffer pH 6 before commencing with IHC staining protocol.

Target

Function

Catalytic subunit of the peripheral V1 complex of vacuolar ATPase (V-ATPase). V-ATPase is responsible for acidifying a variety of intracellular compartments in eukaryotic cells.

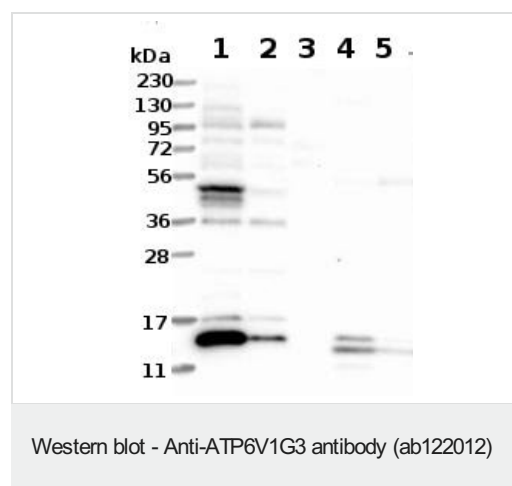
Tissue specificity

Kidney.

Sequence similarities

Belongs to the V-ATPase G subunit family.

Images



All lanes : Anti-ATP6V1G3 antibody (ab122012) at 1/250 dilution

Lane 1 : RT-4 lysate

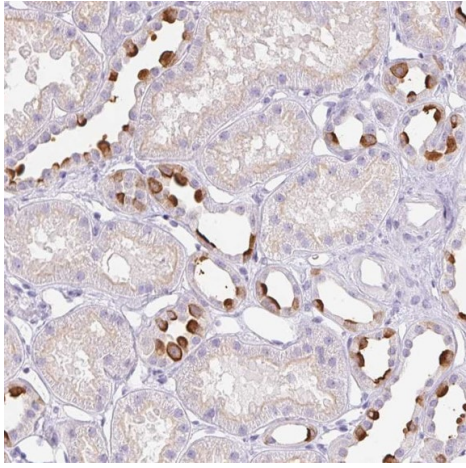
Lane 2 : U-251 MG lysate

Lane 3 : Human plasma.

Lane 4 : Human Liver lysate

Lane 5 : Human Tonsil lysate

Developed using the ECL technique.



Immunohistochemistry (Formalin/PFA-fixed paraffin-embedded sections) - Anti-ATP6V1G3 antibody (ab122012)

Immunohistochemical (Formalin/PFA-fixed paraffin-embedded sections) analysis in human kidney tissue labeling ATP6V1G3 with ab122012 at 1/5000 dilution. Antigen retrieval was heat mediated with citrate buffer pH 6 before commencing with IHC staining protocol.

Please note: All products are "FOR RESEARCH USE ONLY. NOT FOR USE IN DIAGNOSTIC PROCEDURES"

Our Abpromise to you: Quality guaranteed and expert technical support

- Replacement or refund for products not performing as stated on the datasheet
- Valid for 12 months from date of delivery
- Response to your inquiry within 24 hours
- We provide support in Chinese, English, French, German, Japanese and Spanish
- Extensive multi-media technical resources to help you
- We investigate all quality concerns to ensure our products perform to the highest standards

If the product does not perform as described on this datasheet, we will offer a refund or replacement. For full details of the Abpromise, please visit <https://www.abcam.com/abpromise> or contact our technical team.

Terms and conditions

- Guarantee only valid for products bought direct from Abcam or one of our authorized distributors