

## Product datasheet

# Anti-ATRAP antibody ab85175

[2 References](#) [2 Images](#)

### Overview

---

<b>Product name</b>	Anti-ATRAP antibody
<b>Description</b>	Rabbit polyclonal to ATRAP
<b>Host species</b>	Rabbit
<b>Tested applications</b>	<b>Suitable for:</b> IHC-P, WB
<b>Species reactivity</b>	<b>Reacts with:</b> Human
<b>Immunogen</b>	Synthetic peptide corresponding to Human ATRAP (C terminal). Database link: <a href="#">NM_020350</a>
<b>Positive control</b>	WB: HeLa, HepG2, SKOV3, MCF-7 and MDA-MD-231 cell lysates. IHC-P: Human kidney tissue.
<b>General notes</b>	<p>The Life Science industry has been in the grips of a reproducibility crisis for a number of years. Abcam is leading the way in addressing this with our range of recombinant monoclonal antibodies and knockout edited cell lines for gold-standard validation. Please check that this product meets your needs before purchasing.</p> <p>If you have any questions, special requirements or concerns, please send us an inquiry and/or contact our Support team ahead of purchase. Recommended alternatives for this product can be found below, along with publications, customer reviews and Q&amp;As</p>

### Properties

---

<b>Form</b>	Lyophilized:Reconstitute in 200ul sterile H2O.
<b>Storage instructions</b>	Shipped at 4°C. Store at +4°C short term (1-2 weeks). Upon delivery aliquot. Store at -20°C. Avoid freeze / thaw cycle.
<b>Storage buffer</b>	pH: 7.20 Preservative: 0.02% Sodium azide Constituent: 1% BSA
<b>Purity</b>	Immunogen affinity purified
<b>Clonality</b>	Polyclonal
<b>Isotype</b>	IgG

### Applications

---

## The Abpromise guarantee

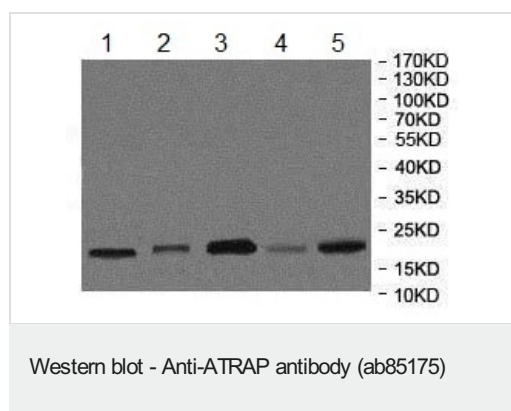
Our **Abpromise guarantee** covers the use of ab85175 in the following tested applications.

The application notes include recommended starting dilutions; optimal dilutions/concentrations should be determined by the end user.

Application	Abreviews	Notes
IHC-P		1/50 - 1/200.
WB		1/200 - 1/1000. Predicted molecular weight: 17 kDa.

## Target

## Images



**All lanes :** Anti-ATRAP antibody (ab85175) at 1/500 dilution

**Lane 1 :** HeLa cell lysate

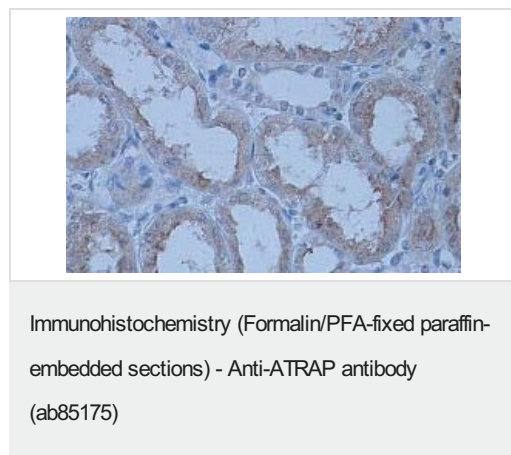
**Lane 2 :** HepG2 cell lysate

**Lane 3 :** SKOV3 cell lysate

**Lane 4 :** MCF-7 cell lysate

**Lane 5 :** MDA-MD-231 cell lysate

**Predicted band size:** 17 kDa



ab85175, at 1/100 dilution, staining ATRAP in formalin-fixed, paraffin-embedded human kidney by Immunohistochemistry. Note cytoplasmic staining.

**Please note:** All products are "FOR RESEARCH USE ONLY. NOT FOR USE IN DIAGNOSTIC PROCEDURES"

## Our Abpromise to you: Quality guaranteed and expert technical support

- Replacement or refund for products not performing as stated on the datasheet
- Valid for 12 months from date of delivery
- Response to your inquiry within 24 hours

- We provide support in Chinese, English, French, German, Japanese and Spanish
- Extensive multi-media technical resources to help you
- We investigate all quality concerns to ensure our products perform to the highest standards

If the product does not perform as described on this datasheet, we will offer a refund or replacement. For full details of the Abpromise, please visit <https://www.abcam.com/abpromise> or contact our technical team.

### **Terms and conditions**

---

- Guarantee only valid for products bought direct from Abcam or one of our authorized distributors