



Product datasheet

Anti-ATRIP (phospho S68) antibody ab182626

1 Image

Overview

Product name	Anti-ATRIP (phospho S68) antibody
Description	Rabbit polyclonal to ATRIP (phospho S68)
Host species	Rabbit
Tested applications	Suitable for: WB
Species reactivity	Reacts with: Mouse
Immunogen	<p>Synthetic peptide within Human ATRIP aa 50-150 (phospho S68) conjugated to keyhole limpet haemocyanin. The exact immunogen sequence used to generate this antibody is proprietary information. If additional detail on the immunogen is needed to determine the suitability of the antibody for your needs, please contact our Scientific Support team to discuss your requirements.</p> <p>Database link: Q8WXE1</p> <p> Run BLAST with  Run BLAST with</p>
Positive control	3T3 cell line lysate
General notes	<p>The Life Science industry has been in the grips of a reproducibility crisis for a number of years. Abcam is leading the way in addressing this with our range of recombinant monoclonal antibodies and knockout edited cell lines for gold-standard validation. Please check that this product meets your needs before purchasing.</p> <p>If you have any questions, special requirements or concerns, please send us an inquiry and/or contact our Support team ahead of purchase. Recommended alternatives for this product can be found below, along with publications, customer reviews and Q&As</p>

Properties

Form	Liquid
Storage instructions	Shipped at 4°C. Store at +4°C short term (1-2 weeks). Upon delivery aliquot. Store at -20°C long term. Avoid freeze / thaw cycle.
Storage buffer	<p>pH: 7.40</p> <p>Preservative: 0.05% Sodium azide</p> <p>Constituents: 49% PBS, 50% Glycerol (glycerin, glycerine), 0.88% Sodium chloride</p> <p>without Mg²⁺ and Ca²⁺</p>
Purity	Immunogen affinity purified

Purification notes	Non-phospho specific antibodies were removed by chromatography using non-phosphopeptide.
Clonality	Polyclonal
Isotype	IgG

Applications

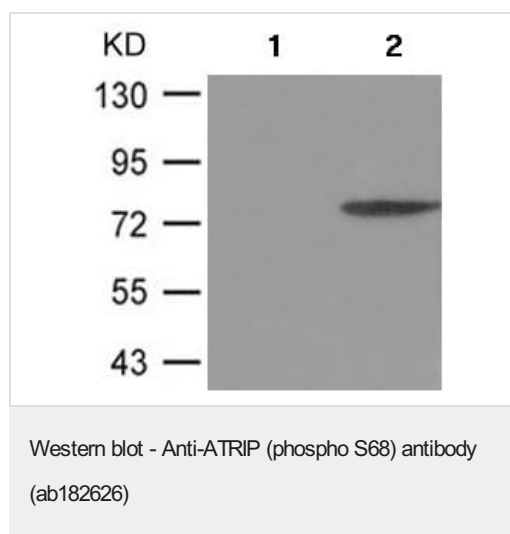
The Abpromise guarantee Our **Abpromise guarantee** covers the use of ab182626 in the following tested applications. The application notes include recommended starting dilutions; optimal dilutions/concentrations should be determined by the end user.

Application	Abreviews	Notes
WB		1/500 - 1/1000. Predicted molecular weight: 86 kDa.

Target

Function	Required for checkpoint signaling after DNA damage. Required for ATR expression, possibly by stabilizing the protein.
Tissue specificity	Ubiquitous.
Sequence similarities	Belongs to the ATRIP family.
Domain	The EEXXXDDL motif is required for the interaction with catalytic subunit PRKDC and its recruitment to sites of DNA damage.
Post-translational modifications	Phosphorylated by ATR.
Cellular localization	Nucleus. Redistributes to discrete nuclear foci upon DNA damage.

Images



All lanes : Anti-ATRIP (phospho S68) antibody (ab182626) at 1/500 dilution

Lane 1 : Extracts from 3T3 cells with Antigen-specific peptide

Lane 2 : Extracts from 3T3 cells

Developed using the ECL technique.

Predicted band size: 86 kDa

Please note: All products are "FOR RESEARCH USE ONLY. NOT FOR USE IN DIAGNOSTIC PROCEDURES"

Our Abpromise to you: Quality guaranteed and expert technical support

- Replacement or refund for products not performing as stated on the datasheet
- Valid for 12 months from date of delivery
- Response to your inquiry within 24 hours

- We provide support in Chinese, English, French, German, Japanese and Spanish
- Extensive multi-media technical resources to help you
- We investigate all quality concerns to ensure our products perform to the highest standards

If the product does not perform as described on this datasheet, we will offer a refund or replacement. For full details of the Abpromise, please visit <https://www.abcam.com/abpromise> or contact our technical team.

Terms and conditions

- Guarantee only valid for products bought direct from Abcam or one of our authorized distributors