

Product datasheet

Anti-Aurora A (phospho T288) antibody ab83968

★★★★★ [2 Abreviews](#) [5 References](#) [2 Images](#)

Overview

Product name	Anti-Aurora A (phospho T288) antibody
Description	Rabbit polyclonal to Aurora A (phospho T288)
Host species	Rabbit
Tested applications	Suitable for: ICC/IF
Species reactivity	Reacts with: Human
Immunogen	Synthetic peptide corresponding to Human Aurora A (phospho T288). Database link: NP_003591.2
Positive control	NBF fixed asynchronous HeLa cells.
General notes	<p>The Life Science industry has been in the grips of a reproducibility crisis for a number of years. Abcam is leading the way in addressing this with our range of recombinant monoclonal antibodies and knockout edited cell lines for gold-standard validation. Please check that this product meets your needs before purchasing.</p> <p>If you have any questions, special requirements or concerns, please send us an inquiry and/or contact our Support team ahead of purchase. Recommended alternatives for this product can be found below, along with publications, customer reviews and Q&As</p>

Properties

Form	Liquid
Storage instructions	Shipped at 4°C. Upon delivery aliquot and store at -20°C. Avoid freeze / thaw cycles.
Storage buffer	pH: 6.8 Preservative: 0.09% Sodium azide Constituents: 0.1% BSA, Tris buffered saline
Purity	Immunogen affinity purified
Purification notes	Antibody was affinity purified using an epitope specific to Phospho Aurora A immobilized on a solid support.
Clonality	Polyclonal
Isotype	IgG

Applications

The Abpromise guarantee

Our **Abpromise guarantee** covers the use of ab83968 in the following tested applications.

The application notes include recommended starting dilutions; optimal dilutions/concentrations should be determined by the end user.

Application	Abreviews	Notes
ICC/IF	★★★★★ (1)	1/100 - 1/500. Formaldehyde fixed cells. Permeabilisation with Triton-X100 is recommended.

Target

Function

Contributes to the regulation of cell cycle progression. Required for normal mitosis. Associates with the centrosome and the spindle microtubules during mitosis and functions in centrosome maturation, spindle assembly, maintenance of spindle bipolarity, centrosome separation and mitotic checkpoint control. Phosphorylates numerous target proteins, including ARHGEF2, BRCA1, KIF2A, NDEL1, PARD3, PLK1 and BORA. Regulates KIF2A tubulin depolymerase activity (By similarity). Required for normal axon formation. Plays a role in microtubule remodeling during neurite extension. Important for microtubule formation and/or stabilization.

Tissue specificity

Highly expressed in testis and weakly in skeletal muscle, thymus and spleen. Also highly expressed in colon, ovarian, prostate, neuroblastoma, breast and cervical cancer cell lines.

Sequence similarities

Belongs to the protein kinase superfamily. Ser/Thr protein kinase family. Aurora subfamily. Contains 1 protein kinase domain.

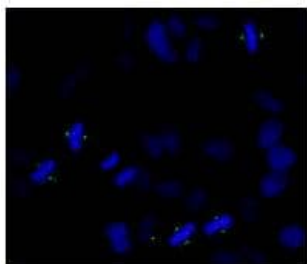
Post-translational modifications

Activated by phosphorylation at Thr-288; this brings about a change in the conformation of the activation segment. Phosphorylation at Thr-288 varies during the cell cycle and is highest during M phase. Autophosphorylated at Thr-288 upon TPX2 binding. Phosphorylated upon DNA damage, probably by ATM or ATR.
Ubiquitinated by CHFR, leading to its degradation by the proteasome (By similarity).
Ubiquitinated by the anaphase-promoting complex (APC), leading to its degradation by the proteasome.

Cellular localization

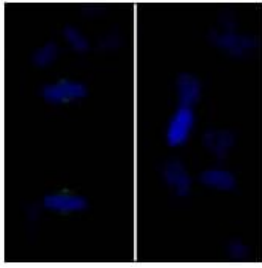
Cytoplasm > cytoskeleton > centrosome. Cytoplasm > cytoskeleton > spindle pole. Detected at the neurite hillock in developing neurons (By similarity). Localizes on centrosomes in interphase cells and at each spindle pole in mitosis.

Images



ab83968, at a dilution of 1/250, staining Aurora A in NBF fixed asynchronous HeLa cells by Immunocytochemistry/Immunofluorescence.
Detection: Anti-rabbit IgG-FITC conjugated antibody used at a dilution of 1/100.

Immunocytochemistry/ Immunofluorescence - Anti-Aurora A (phospho T288) antibody (ab83968)



Immunocytochemistry/ Immunofluorescence - Anti-Aurora A (phospho T288) antibody (ab83968)

ab83968, at a dilution of 1/250, staining Aurora A in NBF fixed asynchronous HeLa cells by Immunocytochemistry/Immunofluorescence. Mock phosphatase treated section (left), or calf intestinal phosphatase treated section (right). Detection: Anti-rabbit IgG-FITC conjugated antibody used at a dilution of 1/100.

Please note: All products are "FOR RESEARCH USE ONLY. NOT FOR USE IN DIAGNOSTIC PROCEDURES"

Our Abpromise to you: Quality guaranteed and expert technical support

- Replacement or refund for products not performing as stated on the datasheet
- Valid for 12 months from date of delivery
- Response to your inquiry within 24 hours
- We provide support in Chinese, English, French, German, Japanese and Spanish
- Extensive multi-media technical resources to help you
- We investigate all quality concerns to ensure our products perform to the highest standards

If the product does not perform as described on this datasheet, we will offer a refund or replacement. For full details of the Abpromise, please visit <https://www.abcam.com/abpromise> or contact our technical team.

Terms and conditions

- Guarantee only valid for products bought direct from Abcam or one of our authorized distributors