

## Product datasheet

# Anti-Azurocidin antibody ab167336

[2 References](#) [4 Images](#)

### Overview

---

<b>Product name</b>	Anti-Azurocidin antibody
<b>Description</b>	Mouse polyclonal to Azurocidin
<b>Host species</b>	Mouse
<b>Tested applications</b>	<b>Suitable for:</b> WB, IHC-P, ICC/IF
<b>Species reactivity</b>	<b>Reacts with:</b> Human
<b>Immunogen</b>	Recombinant full length protein within Human Azurocidin aa 1-300. The exact immunogen sequence used to generate this antibody is proprietary information. If additional detail on the immunogen is needed to determine the suitability of the antibody for your needs, please <b>contact</b> our Scientific Support team to discuss your requirements. <a href="#">Run BLAST with</a> <a href="#">Run BLAST with</a>
<b>Positive control</b>	Human spleen lysate; Azurocidin transfected 293T cell lysate; Human lymph node tissue; HeLa cells.
<b>General notes</b>	<p>The Life Science industry has been in the grips of a reproducibility crisis for a number of years. Abcam is leading the way in addressing this with our range of recombinant monoclonal antibodies and knockout edited cell lines for gold-standard validation. Please check that this product meets your needs before purchasing.</p> <p>If you have any questions, special requirements or concerns, please send us an inquiry and/or contact our Support team ahead of purchase. Recommended alternatives for this product can be found below, along with publications, customer reviews and Q&amp;As</p>

### Properties

---

<b>Form</b>	Liquid
<b>Storage instructions</b>	Shipped at 4°C. Upon delivery aliquot and store at -20°C or -80°C. Avoid repeated freeze / thaw cycles.
<b>Storage buffer</b>	pH: 7.4 Constituent: 99% PBS
<b>Purity</b>	Protein A purified
<b>Clonality</b>	Polyclonal
<b>Isotype</b>	IgG

## Applications

---

### The Abpromise guarantee

Our **Abpromise guarantee** covers the use of ab167336 in the following tested applications.

The application notes include recommended starting dilutions; optimal dilutions/concentrations should be determined by the end user.

Application	Abreviews	Notes
WB		Use a concentration of 1 µg/ml. Predicted molecular weight: 26 kDa.
IHC-P		Use a concentration of 3 µg/ml. Perform heat mediated antigen retrieval with citrate buffer pH 6 before commencing with IHC staining protocol.
ICC/IF		Use a concentration of 10 µg/ml.

## Target

---

### Function

This is a neutrophil granule-derived antibacterial and monocyte- and fibroblast-specific chemotactic glycoprotein. Binds heparin. The cytotoxic action is limited to many species of Gram-negative bacteria; this specificity may be explained by a strong affinity of the very basic N-terminal half for the negatively charged lipopolysaccharides that are unique to the Gram-negative bacterial outer envelope. It may play a role in mediating recruitment of monocytes in the second wave of inflammation. Has antibacterial activity against the Gram-negative bacterium *P.aeruginosa*, this activity is inhibited by LPS from *P.aeruginosa*. Acting alone, it does not have antimicrobial activity against the Gram-negative bacteria *A.actinomycetemcomitans* ATCC 29532, *A.actinomycetemcomitans* NCTC 9709, *A.actinomycetemcomitans* FDC-Y4, *H.aphrophilus* ATCC 13252, *E.corrodens* ATCC 23834, *C.sputigena* ATCC 33123, *Capnocytophaga* sp ATCC 33124, *Capnocytophaga* sp ATCC 27872 or *E.coli* ML-35. Has antibacterial activity against *C.sputigena* ATCC 33123 when acting synergistically with either elastase or cathepsin G.

### Sequence similarities

Belongs to the peptidase S1 family. Elastase subfamily.  
Contains 1 peptidase S1 domain.

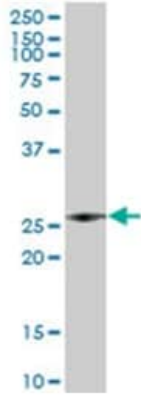
### Cellular localization

Cytoplasmic granule. Cytoplasmic granules of neutrophils.

---

## Images

---



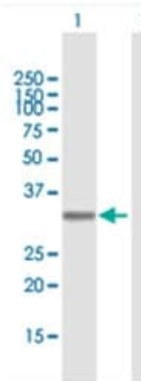
Western blot - Anti-Azurocidin antibody (ab167336)

Anti-Azurocidin antibody (ab167336) at 1  $\mu$ g/ml + Human spleen lysate at 50  $\mu$ g

**Secondary**

Goat Anti-Mouse IgG HRP at 1/2500 dilution

**Predicted band size:** 26 kDa



Western blot - Anti-Azurocidin antibody (ab167336)

**All lanes :** Anti-Azurocidin antibody (ab167336) at 1  $\mu$ g/ml

**Lane 1 :** Azurocidin transfected 293T cell lysate

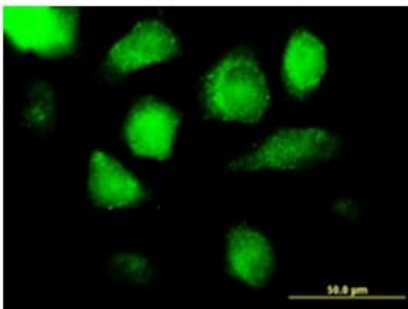
**Lane 2 :** non transfected 293T cell lysate

Lysates/proteins at 15  $\mu$ l per lane.

**Secondary**

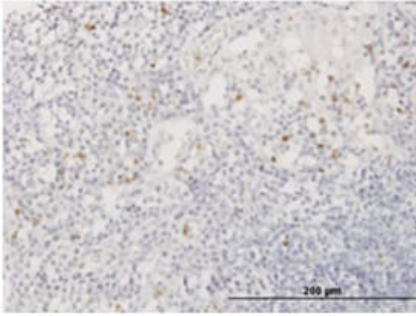
**All lanes :** Goat Anti-Mouse IgG HRP at 1/2500 dilution

**Predicted band size:** 26 kDa



Immunocytochemistry/ Immunofluorescence - Anti-Azurocidin antibody (ab167336)

Immunofluorescent analysis of Azurocidin expression in HeLa cells using ab167336 at 10  $\mu$ g/ml dilution.



Immunohistochemical analysis of Azurocidin expression in formalin-fixed paraffin-embedded Human lymph node tissue using ab167336 at 3 µg/ml dilution

Immunohistochemistry (Formalin/PFA-fixed paraffin-embedded sections) - Anti-Azurocidin antibody (ab167336)

**Please note:** All products are "FOR RESEARCH USE ONLY. NOT FOR USE IN DIAGNOSTIC PROCEDURES"

### Our Abpromise to you: Quality guaranteed and expert technical support

---

- Replacement or refund for products not performing as stated on the datasheet
- Valid for 12 months from date of delivery
- Response to your inquiry within 24 hours
- We provide support in Chinese, English, French, German, Japanese and Spanish
- Extensive multi-media technical resources to help you
- We investigate all quality concerns to ensure our products perform to the highest standards

If the product does not perform as described on this datasheet, we will offer a refund or replacement. For full details of the Abpromise, please visit <https://www.abcam.com/abpromise> or contact our technical team.

### Terms and conditions

---

- Guarantee only valid for products bought direct from Abcam or one of our authorized distributors