

## Product datasheet

### Anti-B1R antibody ab75148

★★★★★ [2 Abreviews](#) [2 References](#) [2 Images](#)

#### Overview

<b>Product name</b>	Anti-B1R antibody
<b>Description</b>	Rabbit polyclonal to B1R
<b>Host species</b>	Rabbit
<b>Tested applications</b>	<b>Suitable for:</b> WB, ICC/IF
<b>Species reactivity</b>	<b>Reacts with:</b> Human
<b>Immunogen</b>	Synthetic peptide corresponding to Human B1R (internal sequence).
<b>Positive control</b>	Extracts from K562 cells. LOVO cells.
<b>General notes</b>	<p>The Life Science industry has been in the grips of a reproducibility crisis for a number of years. Abcam is leading the way in addressing this with our range of recombinant monoclonal antibodies and knockout edited cell lines for gold-standard validation. Please check that this product meets your needs before purchasing.</p> <p>If you have any questions, special requirements or concerns, please send us an inquiry and/or contact our Support team ahead of purchase. Recommended alternatives for this product can be found below, along with publications, customer reviews and Q&amp;As</p>

#### Properties

<b>Form</b>	Liquid
<b>Storage instructions</b>	Shipped at 4°C. Upon delivery aliquot and store at -20°C. Avoid repeated freeze / thaw cycles.
<b>Storage buffer</b>	<p>pH: 7.40</p> <p>Preservative: 0.02% Sodium azide</p> <p>Constituents: 50% Glycerol (glycerin, glycerine), 0.87% Sodium chloride, PBS</p> <p>Without Mg2+ and Ca2+</p>
<b>Purity</b>	Immunogen affinity purified
<b>Clonality</b>	Polyclonal
<b>Isotype</b>	IgG

#### Applications

## The Abpromise guarantee

Our **Abpromise guarantee** covers the use of ab75148 in the following tested applications.

The application notes include recommended starting dilutions; optimal dilutions/concentrations should be determined by the end user.

Application	Abreviews	Notes
WB	★★★★★ (1)	1/500 - 1/1000. Predicted molecular weight: 40 kDa.
ICC/IF		1/500 - 1/1000.

## Target

### Function

This is a receptor for bradykinin. Could be a factor in chronic pain and inflammation.

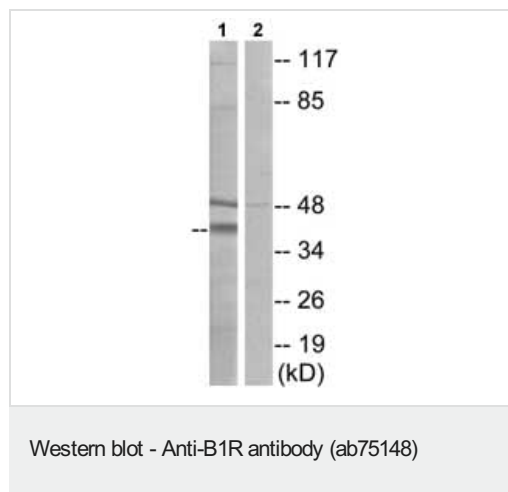
### Sequence similarities

Belongs to the G-protein coupled receptor 1 family. Bradykinin receptor subfamily. BDKRB1 subfamily.

### Cellular localization

Cell membrane.

## Images



**All lanes :** Anti-B1R antibody (ab75148) at 1/500 dilution

**Lane 1 :** Extracts from K562 cells

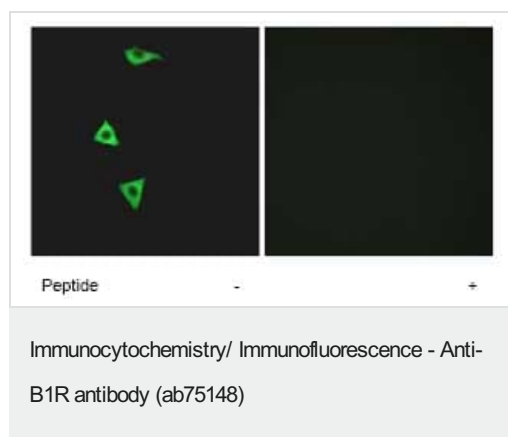
**Lane 2 :** Extracts from K562 cells with immunising peptide at 5 µg

Lysates/proteins at 25 µg per lane.

**Predicted band size:** 40 kDa

**Observed band size:** 40 kDa

**Additional bands at:** 48 kDa, 50 kDa, 82 kDa. We are unsure as to the identity of these extra bands.



Immunofluorescence analysis of B1R in LOVO cells using ab75148, at 1/500 dilution, with (right panel) or without (left panel) preincubation with the immunizing peptide.

**Please note:** All products are "FOR RESEARCH USE ONLY. NOT FOR USE IN DIAGNOSTIC PROCEDURES"

### **Our Abpromise to you: Quality guaranteed and expert technical support**

---

- Replacement or refund for products not performing as stated on the datasheet
- Valid for 12 months from date of delivery
- Response to your inquiry within 24 hours
  
- We provide support in Chinese, English, French, German, Japanese and Spanish
- Extensive multi-media technical resources to help you
- We investigate all quality concerns to ensure our products perform to the highest standards

If the product does not perform as described on this datasheet, we will offer a refund or replacement. For full details of the Abpromise, please visit <https://www.abcam.com/abpromise> or contact our technical team.

### **Terms and conditions**

---

- Guarantee only valid for products bought direct from Abcam or one of our authorized distributors