

Product datasheet

Anti-BAFF antibody ab8396

[3 References](#) [2 Images](#)

Overview

Product name	Anti-BAFF antibody
Description	Rabbit polyclonal to BAFF
Host species	Rabbit
Tested applications	Suitable for: ICC/IF, WB
Species reactivity	Reacts with: Mouse, Rat, Human
Immunogen	Synthetic peptide, corresponding to amino acids 254-269 of Human BAFF.
Positive control	HL60 cell lysate
General notes	<p>The Life Science industry has been in the grips of a reproducibility crisis for a number of years. Abcam is leading the way in addressing this with our range of recombinant monoclonal antibodies and knockout edited cell lines for gold-standard validation. Please check that this product meets your needs before purchasing.</p> <p>If you have any questions, special requirements or concerns, please send us an inquiry and/or contact our Support team ahead of purchase. Recommended alternatives for this product can be found below, along with publications, customer reviews and Q&As</p>

Properties

Form	Liquid
Storage instructions	Shipped at 4°C. Store at +4°C.
Storage buffer	pH: 7.2 Preservative: 0.02% Sodium azide
Purity	Ion Exchange Chromatography
Clonality	Polyclonal
Isotype	IgG
Light chain type	unknown

Applications

The Abpromise guarantee Our **Abpromise guarantee** covers the use of ab8396 in the following tested applications.

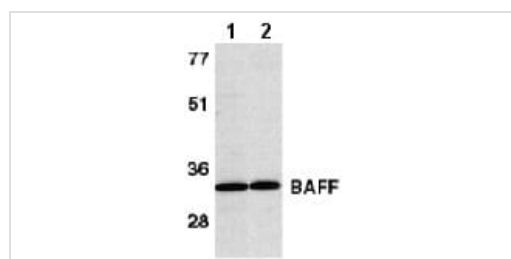
The application notes include recommended starting dilutions; optimal dilutions/concentrations should be determined by the end user.

Application	Abreviews	Notes
ICC/IF		Use a concentration of 1 µg/ml.
WB		Use a concentration of 0.25 - 1 µg/ml. Detects a band of approximately 34 kDa.

Target

Function	Cytokine that binds to TNFRSF13B/TACI and TNFRSF17/BCMA. TNFSF13/APRIL binds to the same 2 receptors. Together, they form a 2 ligands -2 receptors pathway involved in the stimulation of B-and T-cell function and the regulation of humoral immunity. A third B-cell specific BAFF-receptor (BAFFR/BR3) promotes the survival of mature B-cells and the B-cell response.
Tissue specificity	Abundantly expressed in peripheral blood Leukocytes and is specifically expressed in monocytes and macrophages. Also found in the spleen, lymph node, bone marrow, T-cells and dendritic cells. A lower expression seen in placenta, heart, lung, fetal liver, thymus, and pancreas.
Sequence similarities	Belongs to the tumor necrosis factor family.
Post-translational modifications	The soluble form derives from the membrane form by proteolytic processing. N-glycosylated.
Cellular localization	Secreted and Cell membrane.

Images



Western blot - Anti-BAFF antibody (ab8396)

All lanes : Anti-BAFF antibody (ab8396) at 1 µg/ml

Lane 1 : Human HL60 cell lysate

Lane 2 : Murine spleen tissue lysate

Observed band size: 34 kDa



Immunocytochemistry/ Immunofluorescence - Anti-BAFF antibody (ab8396)

ab8396 at 1µg/ml staining BAFF in HL60 cells by ICC/IF

Our Abpromise to you: Quality guaranteed and expert technical support

- Replacement or refund for products not performing as stated on the datasheet
- Valid for 12 months from date of delivery
- Response to your inquiry within 24 hours

- We provide support in Chinese, English, French, German, Japanese and Spanish
- Extensive multi-media technical resources to help you
- We investigate all quality concerns to ensure our products perform to the highest standards

If the product does not perform as described on this datasheet, we will offer a refund or replacement. For full details of the Abpromise, please visit <https://www.abcam.com/abpromise> or contact our technical team.

Terms and conditions

- Guarantee only valid for products bought direct from Abcam or one of our authorized distributors