


## Product datasheet

### Anti-Bag1 antibody [Y166] ab32109

Recombinant RabMAb

★★★★★ [4 Abreviews](#) [9 References](#) [4 Images](#)

#### Overview

Product name	Anti-Bag1 antibody [Y166]
Description	Rabbit monoclonal [Y166] to Bag1
Host species	Rabbit
Specificity	The antibody should recognize all three isoforms of Bag-1 (Bag-1L, Bag-1M and Bag-1S).
Tested applications	<b>Suitable for:</b> WB, IHC-P, ICC/IF <b>Unsuitable for:</b> Flow Cyt
Species reactivity	<b>Reacts with:</b> Human <b>Predicted to work with:</b> Mouse, Rat 
Immunogen	Synthetic peptide within Human Bag1 aa 50-150. The exact sequence is proprietary.
Positive control	HeLa cell lysate and cells, human prostate carcinoma tissue
General notes	This product is a recombinant monoclonal antibody, which offers several advantages including: <ul style="list-style-type: none"> <li>- High batch-to-batch consistency and reproducibility</li> <li>- Improved sensitivity and specificity</li> <li>- Long-term security of supply</li> <li>- Animal-free production</li> </ul> For more information <a href="#">see here</a> . Our RabMAb <sup>®</sup> technology is a patented hybridoma-based technology for making rabbit monoclonal antibodies. For details on our patents, please refer to <a href="#">RabMAb<sup>®</sup> patents</a> .

#### Properties

Form	Liquid
Storage instructions	Shipped at 4°C. Upon delivery aliquot and store at -20°C. Avoid freeze / thaw cycles.
Storage buffer	pH: 7.20 Preservative: 0.01% Sodium azide Constituents: 49% PBS, 50% Glycerol (glycerin, glycerine), 0.05% BSA
Purity	Protein A purified
Clonality	Monoclonal
Clone number	Y166

Isotype IgG

## Applications

**The Abpromise guarantee** Our **Abpromise guarantee** covers the use of ab32109 in the following tested applications. The application notes include recommended starting dilutions; optimal dilutions/concentrations should be determined by the end user.

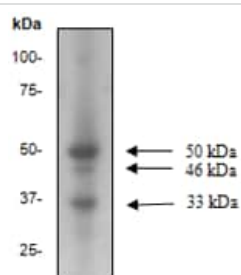
Application	Abreviews	Notes
WB	★★★★★ (2)	1/500. Detects a band of approximately 33, 46, 50 kDa (predicted molecular weight: 31 kDa).
IHC-P		Use at an assay dependent concentration. Perform heat mediated antigen retrieval with citrate buffer pH 6 before commencing with IHC staining protocol.
ICC/IF	★★★★★ (1)	1/100 - 1/250.

**Application notes** Is unsuitable for Flow Cyt.

## Target

<b>Function</b>	Inhibits the chaperone activity of HSP70/HSC70 by promoting substrate release. Inhibits the pro-apoptotic function of PPP1R15A, and has anti-apoptotic activity. Markedly increases the anti-cell death function of BCL2 induced by various stimuli.
<b>Tissue specificity</b>	Isoform 4 is the most abundantly expressed isoform. It is ubiquitously expressed throughout most tissues, except the liver, colon, breast and uterine myometrium. Isoform 1 is expressed in the ovary and testis. Isoform 4 is expressed in several types of tumor cell lines, and at consistently high levels in leukemia and lymphoma cell lines. Isoform 1 is expressed in the prostate, breast and leukemia cell lines. Isoform 3 is the least abundant isoform in tumor cell lines (at protein level).
<b>Sequence similarities</b>	Contains 1 BAG domain. Contains 1 ubiquitin-like domain.
<b>Post-translational modifications</b>	Ubiquitinated; mediated by SIAH1 or SIAH2 and leading to its subsequent proteasomal degradation.
<b>Cellular localization</b>	Cytoplasm. Nucleus. Isoform 2 localizes to the cytoplasm and shuttles into the nucleus in response to heat shock; Nucleus. Cytoplasm. Isoform 1 localizes predominantly to the nucleus and Cytoplasm. Nucleus. Isoform 4 localizes predominantly to the cytoplasm. The cellular background in which it is expressed can influence whether it resides primarily in the cytoplasm or is also found in the nucleus. In the presence of BCL2, localizes to intracellular membranes (what appears to be the nuclear envelope and perinuclear membranes) as well as punctate cytosolic structures suggestive of mitochondria.

## Images



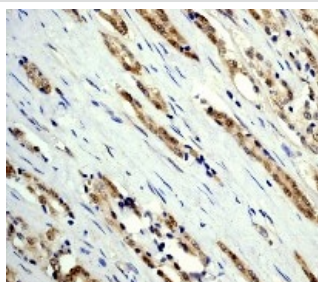
Western blot - Anti-Bag1 antibody [Y166] (ab32109)

Anti-Bag1 antibody [Y166] (ab32109) at 1/500 dilution + HeLa cell lysate

**Predicted band size:** 31 kDa

**Observed band size:** 33 kDa

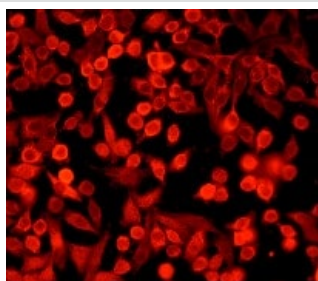
**Additional bands at:** 46 kDa (possible isoform), 50 kDa (possible isoform)



Immunohistochemistry (Formalin/PFA-fixed paraffin-embedded sections) - Anti-Bag1 antibody [Y166] (ab32109)

Immunohistochemical analysis of paraffin-embedded human prostate carcinoma using ab32109 at 1/100 dilution.



Perform heat mediated antigen retrieval with citrate buffer pH 6 before commencing with IHC staining protocol.



Immunocytochemistry/ Immunofluorescence - Anti-Bag1 antibody [Y166] (ab32109)

Immunofluorescent staining of HeLa cells using ab32109 at 1/100 dilution.

Why choose a recombinant antibody?

 <p><b>Research with confidence</b> Consistent and reproducible results</p>	 <p><b>Long-term and scalable supply</b> Recombinant technology</p>
 <p><b>Success from the first experiment</b> Confirmed specificity</p>	 <p><b>Ethical standards compliant</b> Animal-free production</p>

Anti-Bag1 antibody [Y166] (ab32109)

**Please note:** All products are "FOR RESEARCH USE ONLY. NOT FOR USE IN DIAGNOSTIC PROCEDURES"

### Our Abpromise to you: Quality guaranteed and expert technical support

- Replacement or refund for products not performing as stated on the datasheet
- Valid for 12 months from date of delivery
- Response to your inquiry within 24 hours
- We provide support in Chinese, English, French, German, Japanese and Spanish
- Extensive multi-media technical resources to help you
- We investigate all quality concerns to ensure our products perform to the highest standards

If the product does not perform as described on this datasheet, we will offer a refund or replacement. For full details of the Abpromise, please visit <https://www.abcam.com/abpromise> or contact our technical team.

### Terms and conditions

- Guarantee only valid for products bought direct from Abcam or one of our authorized distributors