

## Product datasheet

### Anti-BANK1 antibody [EPR20795] ab229189

Recombinant RabMAb

8 Images

#### Overview

<b>Product name</b>	Anti-BANK1 antibody [EPR20795]
<b>Description</b>	Rabbit monoclonal [EPR20795] to BANK1
<b>Host species</b>	Rabbit
<b>Tested applications</b>	<b>Suitable for:</b> Flow Cyt (Intra), WB, IHC-P
<b>Species reactivity</b>	<b>Reacts with:</b> Mouse, Rat, Human
<b>Immunogen</b>	Recombinant fragment. This information is proprietary to Abcam and/or its suppliers.
<b>Positive control</b>	WB: Daudi and Raji whole cell lysates; Human tonsil and fetal spleen lysates. IHC-P: Human tonsil and large B cell lymphoma tissues; Mouse and rat spleen tissues. Flow Cyt (intra): Daudi cells.
<b>General notes</b>	<p>This product is a recombinant monoclonal antibody, which offers several advantages including:</p> <ul style="list-style-type: none"> <li>- High batch-to-batch consistency and reproducibility</li> <li>- Improved sensitivity and specificity</li> <li>- Long-term security of supply</li> <li>- Animal-free production</li> </ul> <p>For more information <a href="#">see here</a>.</p> <p>Our RabMAb<sup>®</sup> technology is a patented hybridoma-based technology for making rabbit monoclonal antibodies. For details on our patents, please refer to <a href="#">RabMAb<sup>®</sup> patents</a>.</p>

#### Properties

<b>Form</b>	Liquid
<b>Storage instructions</b>	Shipped at 4°C. Store at +4°C short term (1-2 weeks). Upon delivery aliquot. Store at -20°C long term. Avoid freeze / thaw cycle.
<b>Storage buffer</b>	<p>pH: 7.2</p> <p>Preservative: 0.01% Sodium azide</p> <p>Constituents: PBS, 40% Glycerol (glycerin, glycerine), 0.05% BSA</p>
<b>Purity</b>	Protein A purified
<b>Clonality</b>	Monoclonal
<b>Clone number</b>	EPR20795
<b>Isotype</b>	IgG

## Applications

### The Abpromise guarantee

Our **Abpromise guarantee** covers the use of ab229189 in the following tested applications.

The application notes include recommended starting dilutions; optimal dilutions/concentrations should be determined by the end user.

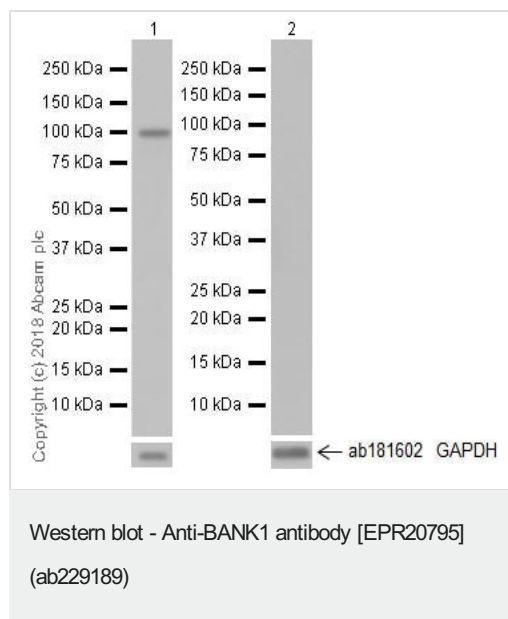
Application	Abreviews	Notes
Flow Cyt (Intra)		1/600.
WB		1/1000. Detects a band of approximately 100 kDa (predicted molecular weight: 89 kDa).
IHC-P		1/500. Perform heat mediated antigen retrieval with Tris/EDTA buffer pH 9.0 before commencing with IHC staining protocol.

## Target

### Relevance

BANK1 is a B cell specific scaffold protein and LYN tyrosine kinase substrate that promotes tyrosine phosphorylation of inositol 1,4,5-trisphosphate receptors.

## Images



**All lanes :** Anti-BANK1 antibody [EPR20795] (ab229189) at 1/1000 dilution

**Lane 1 :** Daudi (human Burkitt's lymphoma cell line) whole cell lysate

**Lane 2 :** Jurkat (human T cell leukemia cell line from peripheral blood) whole cell lysate

Lysates/proteins at 10 µg per lane.

### Secondary

**All lanes :** Goat Anti-Rabbit IgG H&L (HRP) (**ab97051**) at 1/100000 dilution

Developed using the ECL technique.

**Predicted band size:** 89 kDa

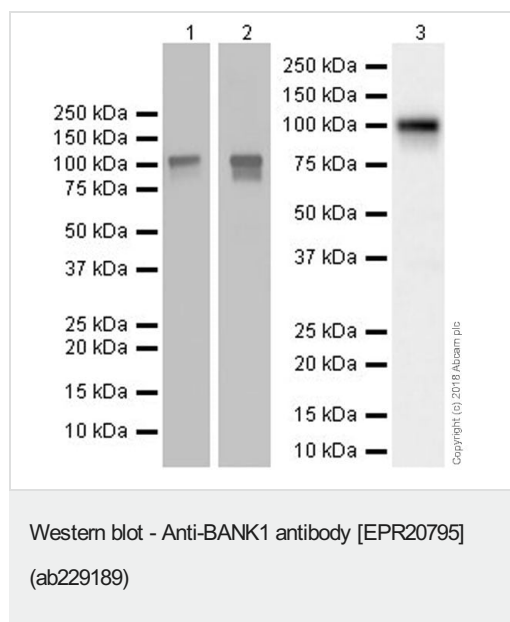
**Observed band size:** 100 kDa

**Exposure time:** 3 seconds

Blocking/Dilution buffer: 5% NFDM/TBST.

The molecular mass observed is consistent with the literature (PMID: 11782428).

The Jurkat cell line is a negative control for BANK1.



**All lanes** : Anti-BANK1 antibody [EPR20795] (ab229189) at 1/1000 dilution

**Lane 1** : Human tonsil lysate

**Lane 2** : Human fetal spleen lysate

**Lane 3** : Raji (human Burkitt's lymphoma cell line) whole cell lysate

Lysates/proteins at 20 µg per lane.

### Secondary

**All lanes** : Goat Anti-Rabbit IgG H&L (HRP) (**ab97051**) at 1/100000 dilution

Developed using the ECL technique.

**Predicted band size:** 89 kDa

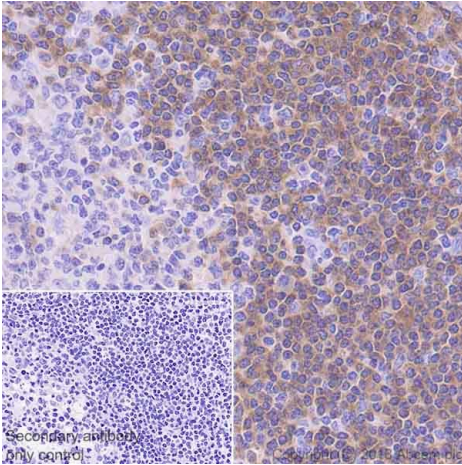
**Observed band size:** 100 kDa

**Exposure time** : Lane 1: 3 minutes; Lane 2: 10 seconds; Lane 3: 58 seconds.

Blocking/Dilution buffer: 5% NFDM/TBST.

Lane 3 was developed on a BIO-RAD® ChemiDoc™ MP instrument.

The molecular mass observed is consistent with the literature (PMID: 11782428).

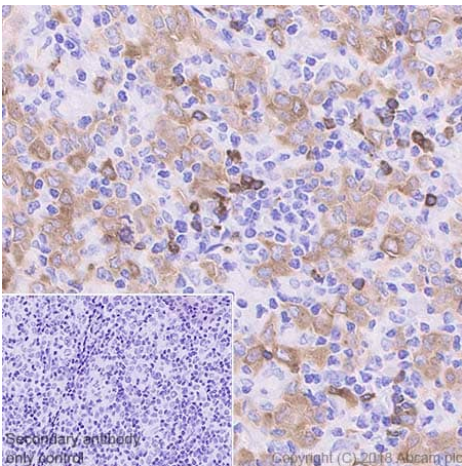


Immunohistochemistry (Formalin/PFA-fixed paraffin-embedded sections) - Anti-BANK1 antibody [EPR20795] (ab229189)

Immunohistochemical analysis of paraffin-embedded human tonsil tissue labeling BANK1 with ab229189 at 1/250 dilution, followed by Goat Anti-Rabbit IgG H&L (HRP), Ready to use. Cytoplasmic staining is weak in the germinal center but strong in the mantle zones of human tonsil (PMID: 24879116). Counter stained with Hematoxylin.

Secondary antibody only control: Used PBS instead of primary antibody, secondary antibody is Goat Anti-Rabbit IgG H&L (HRP), Ready to use.

Heat mediated antigen retrieval was performed with Tris/EDTA buffer pH 9.0 before commencing with IHC staining protocol.

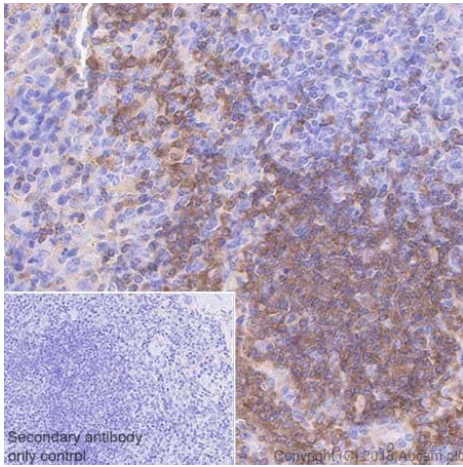


Immunohistochemistry (Formalin/PFA-fixed paraffin-embedded sections) - Anti-BANK1 antibody [EPR20795] (ab229189)

Immunohistochemical analysis of paraffin-embedded human large B cell lymphoma tissue labeling BANK1 with ab229189 at 1/250 dilution, followed by Goat Anti-Rabbit IgG H&L (HRP), Ready to use. Cytoplasmic staining in human large B cell lymphoma cells is observed (PMID: 24879116). Counter stained with Hematoxylin.

Secondary antibody only control: Used PBS instead of primary antibody, secondary antibody is Goat Anti-Rabbit IgG H&L (HRP), Ready to use.

Heat mediated antigen retrieval was performed with Tris/EDTA buffer pH 9.0 before commencing with IHC staining protocol.

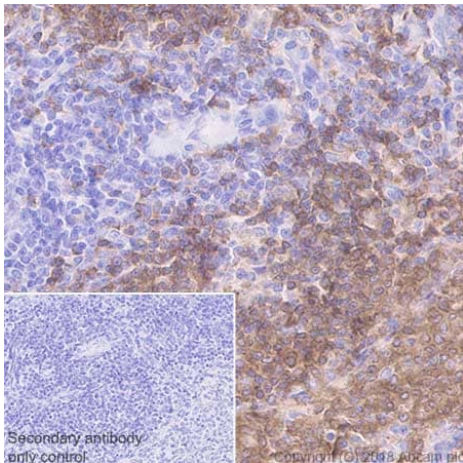


Immunohistochemistry (Formalin/PFA-fixed paraffin-embedded sections) - Anti-BANK1 antibody [EPR20795] (ab229189)

Immunohistochemical analysis of paraffin-embedded mouse spleen tissue labeling BANK1 with ab229189 at 1/250 dilution, followed by Goat Anti-Rabbit IgG H&L (HRP), Ready to use. Cytoplasmic staining in mouse spleen is observed. Counter stained with Hematoxylin.

Secondary antibody only control: Used PBS instead of primary antibody, secondary antibody is Goat Anti-Rabbit IgG H&L (HRP), Ready to use.

Heat mediated antigen retrieval was performed with Tris/EDTA buffer pH 9.0 before commencing with IHC staining protocol.

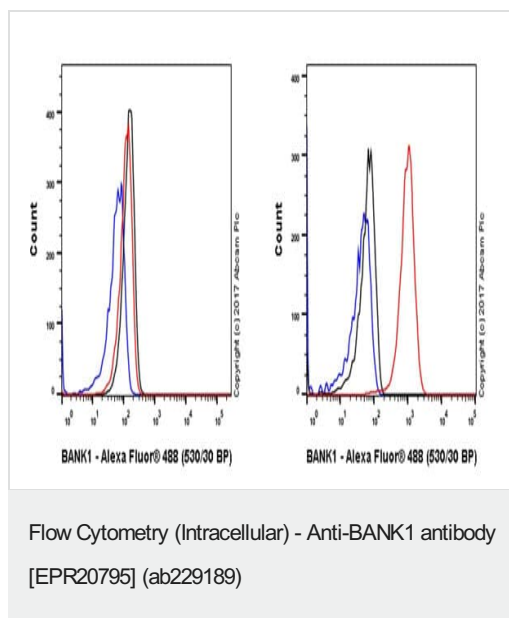


Immunohistochemistry (Formalin/PFA-fixed paraffin-embedded sections) - Anti-BANK1 antibody [EPR20795] (ab229189)

Immunohistochemical analysis of paraffin-embedded rat spleen tissue labeling BANK1 with ab229189 at 1/250 dilution, followed by Goat Anti-Rabbit IgG H&L (HRP), Ready to use. Cytoplasmic staining in rat spleen is observed. Counter stained with Hematoxylin.



Secondary antibody only control: Used PBS instead of primary antibody, secondary antibody is Goat Anti-Rabbit IgG H&L (HRP), Ready to use.

Heat mediated antigen retrieval was performed with Tris/EDTA buffer pH 9.0 before commencing with IHC staining protocol.



Intracellular flow cytometric analysis of 4% paraformaldehyde-fixed, 90% methanol permeabilized Jurkat (human T cell leukemia cell line from peripheral blood) (left panel) and Daudi (human Burkitt's lymphoma cell line) (right panel) cell lines labeling BANK1 with ab229189 at 1/600 dilution (red) compared with a Rabbit IgG, monoclonal [EPR25A] - Isotype Control (**ab172730**) (black) and an unlabeled control (cells without incubation with primary antibody and secondary antibody) (blue). Goat Anti-Rabbit IgG H&L (Alexa Fluor<sup>®</sup> 488) (**ab150077**) at 1/2000 dilution was used as the secondary antibody.

Why choose a recombinant antibody?

 <p><b>Research with confidence</b> Consistent and reproducible results</p>	 <p><b>Long-term and scalable supply</b> Recombinant technology</p>
 <p><b>Success from the first experiment</b> Confirmed specificity</p>	 <p><b>Ethical standards compliant</b> Animal-free production</p>

Anti-BANK1 antibody [EPR20795] (ab229189)

**Please note:** All products are "FOR RESEARCH USE ONLY. NOT FOR USE IN DIAGNOSTIC PROCEDURES"

### Our Abpromise to you: Quality guaranteed and expert technical support

- Replacement or refund for products not performing as stated on the datasheet
- Valid for 12 months from date of delivery

- Response to your inquiry within 24 hours
- We provide support in Chinese, English, French, German, Japanese and Spanish
- Extensive multi-media technical resources to help you
- We investigate all quality concerns to ensure our products perform to the highest standards

If the product does not perform as described on this datasheet, we will offer a refund or replacement. For full details of the Abpromise, please visit <https://www.abcam.com/abpromise> or contact our technical team.

#### **Terms and conditions**

---

- Guarantee only valid for products bought direct from Abcam or one of our authorized distributors