

### Anti-BAP29 antibody ab62571

3 Images

#### Overview

<b>Product name</b>	Anti-BAP29 antibody
<b>Description</b>	Rabbit polyclonal to BAP29
<b>Host species</b>	Rabbit
<b>Tested applications</b>	<b>Suitable for:</b> IHC-P, WB, ICC/IF
<b>Species reactivity</b>	<b>Reacts with:</b> Human
<b>Immunogen</b>	A 17 amino acid peptide from near the center of human BAP29
<b>Positive control</b>	Human heart tissue lysate and human heart tissue.
<b>General notes</b>	<p>The Life Science industry has been in the grips of a reproducibility crisis for a number of years. Abcam is leading the way in addressing this with our range of recombinant monoclonal antibodies and knockout edited cell lines for gold-standard validation. Please check that this product meets your needs before purchasing.</p> <p>If you have any questions, special requirements or concerns, please send us an inquiry and/or contact our Support team ahead of purchase. Recommended alternatives for this product can be found below, along with publications, customer reviews and Q&amp;As</p>

#### Properties

<b>Form</b>	Liquid
<b>Storage instructions</b>	Shipped at 4°C. Store at +4°C.
<b>Storage buffer</b>	pH: 7.2 Preservative: 0.02% Sodium azide Constituent: PBS
<b>Purity</b>	Immunogen affinity purified
<b>Clonality</b>	Polyclonal
<b>Isotype</b>	IgG

#### Applications

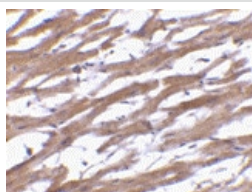
**The Abpromise guarantee** Our **Abpromise guarantee** covers the use of ab62571 in the following tested applications. The application notes include recommended starting dilutions; optimal dilutions/concentrations should be determined by the end user.

Application	Abreviews	Notes
IHC-P		Use a concentration of 10 µg/ml.
WB		Use a concentration of 0.5 - 1 µg/ml. Detects a band of approximately 27 kDa (predicted molecular weight: 27 kDa).
ICC/IF		Use a concentration of 20 µg/ml.

## Target

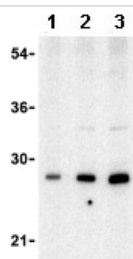
<b>Function</b>	May play a role in anterograde transport of membrane proteins from the endoplasmic reticulum to the Golgi. May be involved in CASP8-mediated apoptosis.
<b>Sequence similarities</b>	Belongs to the BCAP29/BCAP31 family.
<b>Cellular localization</b>	Endoplasmic reticulum membrane.

## Images



Immunohistochemistry (Formalin/PFA-fixed paraffin-embedded sections) - Anti-BAP29 antibody (ab62571)

ab62571 at 10µg/ml staining BAP29 in paraffin embedded human heart tissue section by Immunohistochemistry.



Western blot - Anti-BAP29 antibody (ab62571)

**Lane 1 :** Anti-BAP29 antibody (ab62571) at 0.5 µg/ml

**Lane 2 :** Anti-BAP29 antibody (ab62571) at 1 µg/ml

**Lane 3 :** Anti-BAP29 antibody (ab62571) at 2 µg/ml

**All lanes :** human heart tissue lysate

Lysates/proteins at 15 µg per lane.

**Predicted band size:** 27 kDa

**Observed band size:** 27 kDa

Immunocytochemistry/ Immunofluorescence - Anti-BAP29 antibody (ab62571)

Immunofluorescence of BAP29 in Human Heart cells using ab62571 at 20 ug/ml.

**Please note:** All products are "FOR RESEARCH USE ONLY. NOT FOR USE IN DIAGNOSTIC PROCEDURES"

### Our Abpromise to you: Quality guaranteed and expert technical support

---

- Replacement or refund for products not performing as stated on the datasheet
- Valid for 12 months from date of delivery
- Response to your inquiry within 24 hours
- We provide support in Chinese, English, French, German, Japanese and Spanish
- Extensive multi-media technical resources to help you
- We investigate all quality concerns to ensure our products perform to the highest standards

If the product does not perform as described on this datasheet, we will offer a refund or replacement. For full details of the Abpromise, please visit <https://www.abcam.com/abpromise> or contact our technical team.

### Terms and conditions

---

- Guarantee only valid for products bought direct from Abcam or one of our authorized distributors