

Product datasheet

Anti-BAP29 antibody [EPR7781] ab129023

Recombinant RabMAb

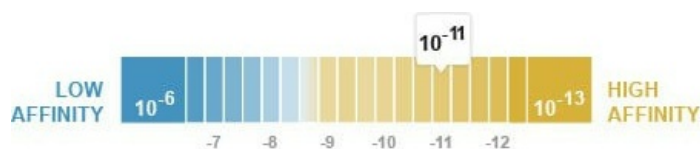
5 Images

Overview

Product name	Anti-BAP29 antibody [EPR7781]
Description	Rabbit monoclonal [EPR7781] to BAP29
Host species	Rabbit
Tested applications	Suitable for: WB, IHC-P, ICC/IF Unsuitable for: Flow Cyt
Species reactivity	Reacts with: Human
Immunogen	Synthetic peptide within Human BAP29 aa 200-300 (C terminal). The exact sequence is proprietary.
Positive control	Fetal brain, U87-MG, fetal heart, Jurkat, SW480, HeLa lysates. Human brain tissue. HeLa cells
General notes	<p>This product is a recombinant monoclonal antibody, which offers several advantages including:</p> <ul style="list-style-type: none"> - High batch-to-batch consistency and reproducibility - Improved sensitivity and specificity - Long-term security of supply - Animal-free production <p>For more information see here.</p> <p>Our RabMAb[®] technology is a patented hybridoma-based technology for making rabbit monoclonal antibodies. For details on our patents, please refer to RabMAb[®] patents.</p> <p>Mouse, Rat: We have preliminary internal testing data to indicate this antibody may not react with these species. Please contact us for more information.</p>

Properties

Form	Liquid
Storage instructions	Shipped at 4°C. Store at -20°C. Stable for 12 months at -20°C.
Dissociation constant (K _D)	K _D = 3.90 x 10 ⁻¹¹ M



Learn more about K_D

Storage buffer	pH: 7.20 Preservative: 0.01% Sodium azide Constituents: 9% PBS, 40% Glycerol (glycerin, glycerine), 0.05% BSA, 50% Tissue culture supernatant
Purity	Protein A purified
Clonality	Monoclonal
Clone number	EPR7781
Isotype	IgG

Applications

The Abpromise guarantee Our **Abpromise guarantee** covers the use of ab129023 in the following tested applications. The application notes include recommended starting dilutions; optimal dilutions/concentrations should be determined by the end user.

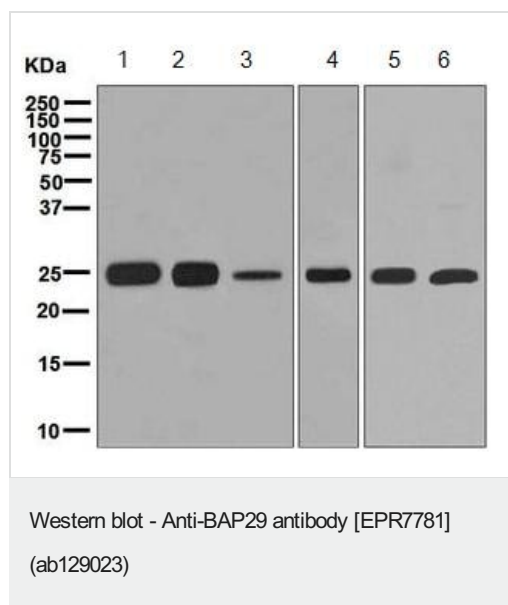
Application	Abreviews	Notes
WB		1/1000 - 1/10000. Detects a band of approximately 25 kDa (predicted molecular weight: 27 kDa).
IHC-P		1/100 - 1/250. Perform heat mediated antigen retrieval before commencing with IHC staining protocol.
ICC/IF		1/100 - 1/250.

Application notes Is unsuitable for Flow Cyt.

Target

Function	May play a role in anterograde transport of membrane proteins from the endoplasmic reticulum to the Golgi. May be involved in CASP8-mediated apoptosis.
Sequence similarities	Belongs to the BCAP29/BCAP31 family.
Cellular localization	Endoplasmic reticulum membrane.

Images



All lanes : Anti-BAP29 antibody [EPR7781] (ab129023) at 1/10000 dilution

Lane 1 : Fetal brain tissue lysate

Lane 2 : U87-MG cell lysate

Lane 3 : Fetal heart tissue lysate

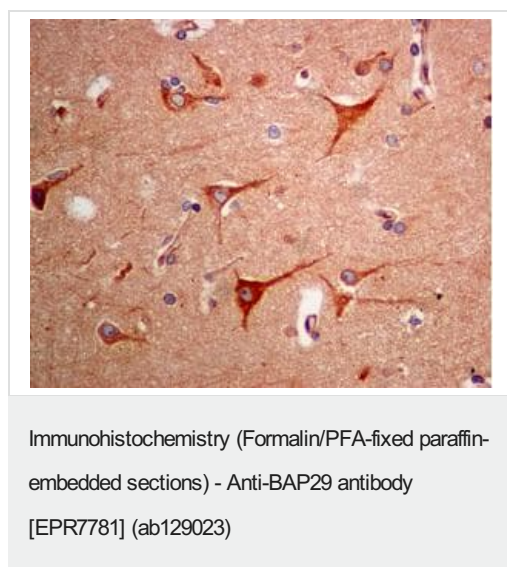
Lane 4 : Jurkat cell lysate

Lane 5 : SW480 cell lysate

Lane 6 : HeLa cell lysate

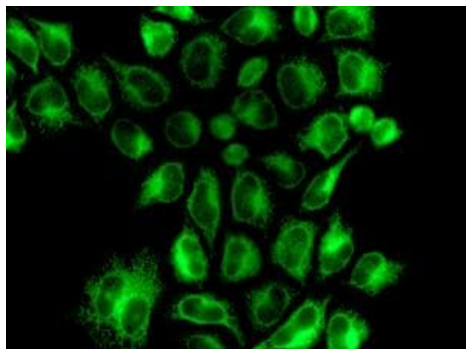
Lysates/proteins at 10 µg per lane.

Predicted band size: 27 kDa



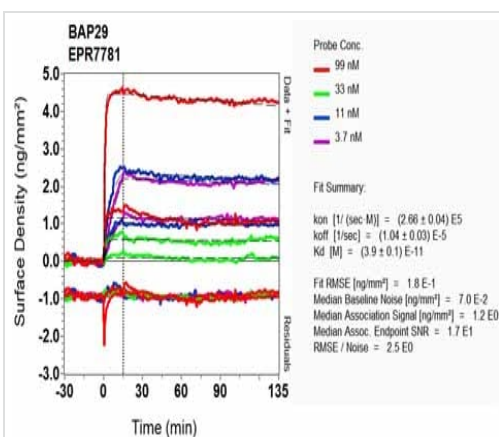
ab129023, at 1/100 dilution staining BAP29 in formalin fixed paraffin embedded Human brain tissue by immunohistochemistry

Perform heat mediated antigen retrieval before commencing with IHC staining protocol.



Immunocytochemistry/ Immunofluorescence - Anti-BAP29 antibody [EPR7781] (ab129023)

ab129023, at 1/100, staining BAP29 in HeLa cells by immunofluorescence.



OI-RD Scanning - Anti-BAP29 antibody [EPR7781] (ab129023)

Equilibrium disassociation constant (K_D)

Learn more about K_D

[Click here to learn more about \$K_D\$](#)

Why choose a recombinant antibody?



Research with confidence
Consistent and reproducible results



Long-term and scalable supply
Recombinant technology



Success from the first experiment
Confirmed specificity



Ethical standards compliant
Animal-free production

Anti-BAP29 antibody [EPR7781] (ab129023)

Please note: All products are "FOR RESEARCH USE ONLY. NOT FOR USE IN DIAGNOSTIC PROCEDURES"

Our Abpromise to you: Quality guaranteed and expert technical support

- Replacement or refund for products not performing as stated on the datasheet
- Valid for 12 months from date of delivery
- Response to your inquiry within 24 hours
- We provide support in Chinese, English, French, German, Japanese and Spanish
- Extensive multi-media technical resources to help you
- We investigate all quality concerns to ensure our products perform to the highest standards

If the product does not perform as described on this datasheet, we will offer a refund or replacement. For full details of the Abpromise, please visit <https://www.abcam.com/abpromise> or contact our technical team.

Terms and conditions

- Guarantee only valid for products bought direct from Abcam or one of our authorized distributors