


## Product datasheet

### Anti-Bax antibody ab104156

KO VALIDATED

[12 References](#) [3 Images](#)

#### Overview

<b>Product name</b>	Anti-Bax antibody
<b>Description</b>	Rabbit polyclonal to Bax
<b>Host species</b>	Rabbit
<b>Specificity</b>	Expression levels of BAX protein vary with sample type. Induction may be required if endogenous expression is low.
<b>Tested applications</b>	<b>Suitable for:</b> WB
<b>Species reactivity</b>	<b>Reacts with:</b> Human <b>Predicted to work with:</b> Cow, Cat, Dog, Pig, Macaque monkey 
<b>Immunogen</b>	Synthetic peptide within Human Bax aa 1-100 conjugated to keyhole limpet haemocyanin. The exact sequence is proprietary. Database link: <a href="#">Q07812</a>
<b>Positive control</b>	This antibody gave a positive signal in Human lymph node tissue lysate.
<b>General notes</b>	<p>The Life Science industry has been in the grips of a reproducibility crisis for a number of years. Abcam is leading the way in addressing this with our range of recombinant monoclonal antibodies and knockout edited cell lines for gold-standard validation. Please check that this product meets your needs before purchasing.</p> <p>If you have any questions, special requirements or concerns, please send us an inquiry and/or contact our Support team ahead of purchase. Recommended alternatives for this product can be found below, along with publications, customer reviews and Q&amp;As</p>

#### Properties

<b>Form</b>	Liquid
<b>Storage instructions</b>	Shipped at 4°C. Store at +4°C short term (1-2 weeks). Upon delivery aliquot. Store at -20°C or -80°C. Avoid freeze / thaw cycle.
<b>Storage buffer</b>	pH: 7.40 Preservative: 0.02% Sodium azide Constituent: PBS
Batches of this product that have a concentration < 1mg/ml may have BSA added as a stabilising	

agent. If you would like information about the formulation of a specific lot, please contact our scientific support team who will be happy to help.

<b>Purity</b>	Immunogen affinity purified
<b>Clonality</b>	Polyclonal
<b>Isotype</b>	IgG

## Applications

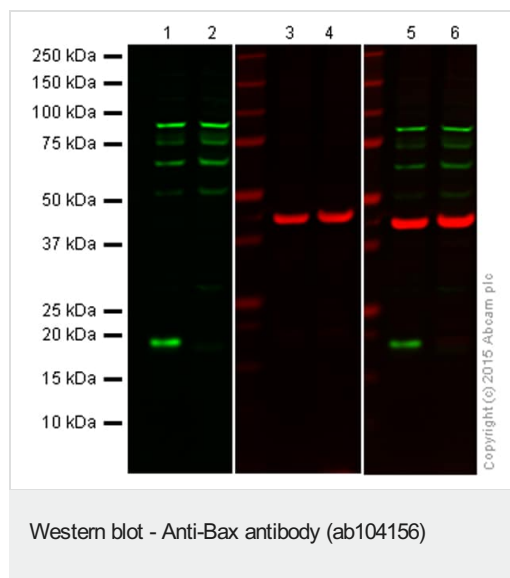
**The Abpromise guarantee** Our **Abpromise guarantee** covers the use of ab104156 in the following tested applications. The application notes include recommended starting dilutions; optimal dilutions/concentrations should be determined by the end user.

Application	Abreviews	Notes
<b>WB</b>		Use a concentration of 1 µg/ml. Detects a band of approximately 21 kDa (predicted molecular weight: 21 kDa).

## Target

<b>Function</b>	Accelerates programmed cell death by binding to, and antagonizing the apoptosis repressor BCL2 or its adenovirus homolog E1B 19k protein. Under stress conditions, undergoes a conformation change that causes translocation to the mitochondrion membrane, leading to the release of cytochrome c that then triggers apoptosis. Promotes activation of CASP3, and thereby apoptosis.
<b>Tissue specificity</b>	Expressed in a wide variety of tissues. Isoform Psi is found in glial tumors. Isoform Alpha is expressed in spleen, breast, ovary, testis, colon and brain, and at low levels in skin and lung. Isoform Sigma is expressed in spleen, breast, ovary, testis, lung, colon, brain and at low levels in skin. Isoform Alpha and isoform Sigma are expressed in pro-myelocytic leukemia, histiocytic lymphoma, Burkitt's lymphoma, T-cell lymphoma, lymphoblastic leukemia, breast adenocarcinoma, ovary adenocarcinoma, prostate carcinoma, prostate adenocarcinoma, lung carcinoma, epidermoid carcinoma, small cell lung carcinoma and colon adenocarcinoma cell lines.
<b>Sequence similarities</b>	Belongs to the Bcl-2 family.
<b>Domain</b>	Intact BH3 motif is required by BIK, BID, BAK, BAD and BAX for their pro-apoptotic activity and for their interaction with anti-apoptotic members of the Bcl-2 family.
<b>Cellular localization</b>	Cytoplasm and Mitochondrion membrane. Cytoplasm. Colocalizes with 14-3-3 proteins in the cytoplasm. Under stress conditions, undergoes a conformation change that causes release from JNK-phosphorylated 14-3-3 proteins and translocation to the mitochondrion membrane.

## Images



**Lanes 1, 3 and 5:** Wild-type HAP1 cell lysate (20 µg)

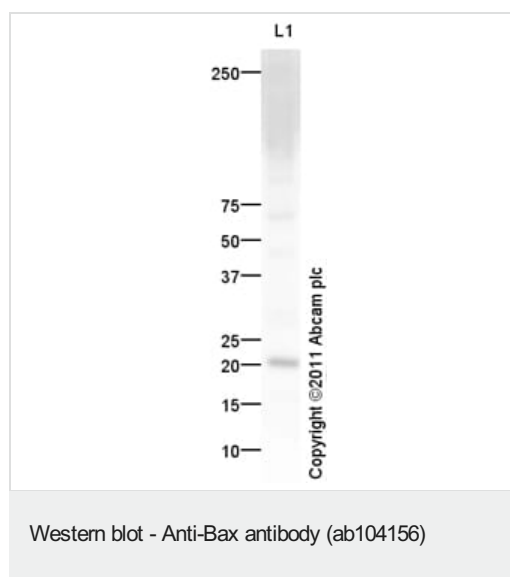
**Lanes 2, 4 and 6:** Bax knockout HAP1 cell lysate (20 µg)

**Lanes 1 and 2:** Green signal from target – ab104156 observed at 20 kDa

**Lanes 3 and 4:** Red signal from loading control – [ab8226](#) observed at 42 kDa

**Lanes 5 and 6:** Merged (red and green) signal

ab104156 was shown to react with Bax when Bax knockout samples were used, along with additional cross-reactive bands. Wild-type and Bax knockout samples were subjected to SDS-PAGE. ab104156 and [ab8226](#) (loading control to beta actin) were diluted 1 µg/mL and 1/2000 respectively and incubated overnight at 4°C. Blots were developed with Goat anti-Rabbit IgG H&L (IRDye® 800CW) preadsorbed [ab216773](#) and Goat anti-Mouse IgG H&L (IRDye® 680RD) preadsorbed [ab216776](#) secondary antibodies at 1/10000 dilution for 1 h at room temperature before imaging.



Anti-Bax antibody (ab104156) at 1 µg/ml + Human lymph node tissue lysate - total protein ([ab29871](#)) at 10 µg

### Secondary

Goat Anti-Rabbit IgG H&L (HRP) preadsorbed ([ab97080](#)) at 1/5000 dilution

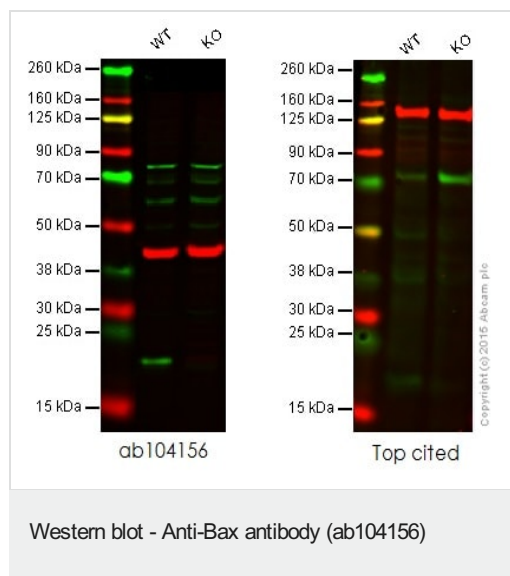
Developed using the ECL technique.

Performed under reducing conditions.

**Predicted band size:** 21 kDa

**Observed band size:** 21 kDa

**Exposure time:** 4 minutes



**Lane 1:** Wild-type HAP1 cell lysate (20 µg)

**Lane 2:** Bax knockout HAP1 cell lysate (20 µg)

**Lanes 1 - 2:** Merged signal (red and green). Green - ab104156 observed at 20 kDa. Red - loading control, **ab8245**, observed at 37 kDa or **ab18058**, observed at 130 kDa.

This western blot image is a comparison between ab104156 and a competitor's top cited rabbit polyclonal antibody.

**Please note:** All products are "FOR RESEARCH USE ONLY. NOT FOR USE IN DIAGNOSTIC PROCEDURES"

### Our Abpromise to you: Quality guaranteed and expert technical support

- Replacement or refund for products not performing as stated on the datasheet
- Valid for 12 months from date of delivery
- Response to your inquiry within 24 hours
- We provide support in Chinese, English, French, German, Japanese and Spanish
- Extensive multi-media technical resources to help you
- We investigate all quality concerns to ensure our products perform to the highest standards

If the product does not perform as described on this datasheet, we will offer a refund or replacement. For full details of the Abpromise, please visit <https://www.abcam.com/abpromise> or contact our technical team.

### Terms and conditions

- Guarantee only valid for products bought direct from Abcam or one of our authorized distributors